

**XAGE1 (Isoform 1d) / GAGED2 Antibody (C-Term)**  
**Peptide-affinity purified goat antibody**  
**Catalog # AF2415a****Specification**

---

**XAGE1 (Isoform 1d) / GAGED2 Antibody (C-Term) - Product Information**

Application	IHC, E
Primary Accession	<a href="#">O9HD64</a>
Other Accession	<a href="#">NP_597673.1</a> , <a href="#">9503</a>
Reactivity	Human
Host	Goat
Clonality	Polyclonal
Concentration	0.5 mg/ml
Isotype	IgG
Calculated MW	9078

**XAGE1 (Isoform 1d) / GAGED2 Antibody (C-Term) - Additional Information****Gene ID** 653067;653220**Other Names**

X antigen family member 1, XAGE-1, Cancer/testis antigen 12.1, CT12.1, G antigen family D member 2, XAGE1A, GAGED2, XAGE1

**Dilution**

IHC~~1:100~500

E~~N/A

**Format**

0.5 mg/ml in Tris saline, 0.02% sodium azide, pH7.3 with 0.5% bovine serum albumin

**Storage**

Maintain refrigerated at 2-8°C for up to 6 months. For long term storage store at -20°C in small aliquots to prevent freeze-thaw cycles.

**Precautions**

XAGE1 (Isoform 1d) / GAGED2 Antibody (C-Term) is for research use only and not for use in diagnostic or therapeutic procedures.

**XAGE1 (Isoform 1d) / GAGED2 Antibody (C-Term) - Protein Information****Name** XAGE1A ([HGNC:4111](#))**Tissue Location**

In normal tissues, highly expressed in testis. Expressed also in many different types of cancers: highly expressed in breast cancer, prostate cancer and many types of lung cancers, including squamous cell carcinoma, small cell carcinoma, non-small cell carcinoma, and adenocarcinoma, as

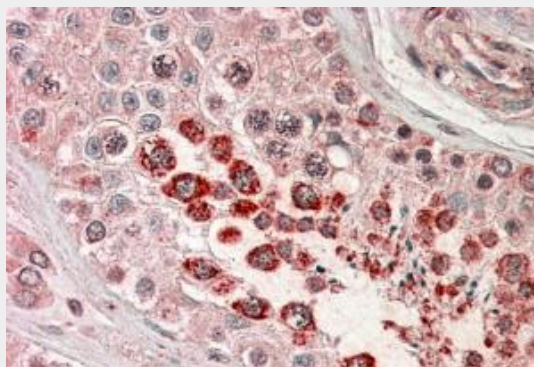
well as in Ewing's cell lines, in some Ewing's sarcoma patient samples, and in one of one alveolar rhabdomyosarcoma patient sample.

### **XAGE1 (Isoform 1d) / GAGED2 Antibody (C-Term) - Protocols**

Provided below are standard protocols that you may find useful for product applications.

- [Western Blot](#)
- [Blocking Peptides](#)
- [Dot Blot](#)
- [Immunohistochemistry](#)
- [Immunofluorescence](#)
- [Immunoprecipitation](#)
- [Flow Cytometry](#)
- [Cell Culture](#)

### **XAGE1 (Isoform 1d) / GAGED2 Antibody (C-Term) - Images**



AF2415a (3.8 µg/ml) staining of paraffin embedded Human Testis. Steamed antigen retrieval with citrate buffer pH 6, AP-staining.

### **XAGE1 (Isoform 1d) / GAGED2 Antibody (C-Term) - Background**

This antibody is expected to recognise isoform d (NP\_597673.1) only. Reported variants represent identical protein (NP\_597673.1; NP\_001091067.1; NP\_001091074.1; NP\_001091062.1; NP\_001091065.1).

### **XAGE1 (Isoform 1d) / GAGED2 Antibody (C-Term) - References**

XAGE-1, a new gene that is frequently expressed in Ewing's sarcoma. Liu XF, Helman LJ, Yeung C, Bera TK, Lee B, Pastan I. Cancer Res. 2000 Sep 1;60(17):4752-5. PMID: 10987281