

CLCA1 Antibody (internal region)
Peptide-affinity purified goat antibody
Catalog # AF2441a**Specification**

CLCA1 Antibody (internal region) - Product Information

Application	WB, E
Primary Accession	A8K7I4
Other Accession	NP_001276.1 , 1179
Reactivity	Human
Host	Goat
Clonality	Polyclonal
Concentration	0.5 mg/ml
Isotype	IgG
Calculated MW	100226

CLCA1 Antibody (internal region) - Additional Information**Gene ID** 1179**Other Names**

Calcium-activated chloride channel regulator 1, 3.4.-., Calcium-activated chloride channel family member 1, hCLCA1, Calcium-activated chloride channel protein 1, CaCC-1, hCaCC-1, CLCA1, CACC1

Dilution

WB~~1:1000

E~~N/A

Format

0.5 mg/ml in Tris saline, 0.02% sodium azide, pH7.3 with 0.5% bovine serum albumin

Storage

Maintain refrigerated at 2-8°C for up to 6 months. For long term storage store at -20°C in small aliquots to prevent freeze-thaw cycles.

Precautions

CLCA1 Antibody (internal region) is for research use only and not for use in diagnostic or therapeutic procedures.

CLCA1 Antibody (internal region) - Protein Information**Name** CLCA1**Synonyms** CACC1**Function**

May be involved in mediating calcium-activated chloride conductance. May play critical roles in goblet cell metaplasia, mucus hypersecretion, cystic fibrosis and AHR. May be involved in the regulation of mucus production and/or secretion by goblet cells. Involved in the regulation of tissue inflammation in the innate immune response. May play a role as a tumor suppressor. Induces MUC5AC.

Cellular Location

Secreted, extracellular space. Cell membrane; Peripheral membrane protein; Extracellular side. Note=Protein that remains attached to the plasma membrane appeared to be predominantly localized to microvilli

Tissue Location

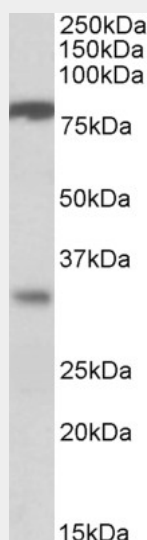
Highly expressed in small intestine and colon namely in intestinal basal crypt epithelia and goblet cells, and appendix. Weakly expressed in uterus, testis and kidney. Expressed in the airways epithelium of both asthmatic and healthy patients Expressed in the bronchial epithelium, especially in mucus-producing goblet cells. Expressed in normal turbinate mucosa and nasal polyp Expressed in.

CLCA1 Antibody (internal region) - Protocols

Provided below are standard protocols that you may find useful for product applications.

- [Western Blot](#)
- [Blocking Peptides](#)
- [Dot Blot](#)
- [Immunohistochemistry](#)
- [Immunofluorescence](#)
- [Immunoprecipitation](#)
- [Flow Cytometry](#)
- [Cell Culture](#)

CLCA1 Antibody (internal region) - Images



AF2441a (1 µg/ml) staining of Human Duodenum lysate (35 µg protein in RIPA buffer). Primary incubation was 1 hour. Detected by chemiluminescence.

CLCA1 Antibody (internal region) - Background

No cross-reactivity expected with CLCA2 and 3.

CLCA1 Antibody (internal region) - References

A review of asthma genetics: gene expression studies and recent candidates. Malerba G, Pignatti PF. J Appl Genet. 2005;46(1):93-104. Review. PMID: 15741670