

Semaphorin 3E (internal) Antibody (internal region)
Peptide-affinity purified goat antibody
Catalog # AF2548a

Specification

Semaphorin 3E (internal) Antibody (internal region) - Product Information

Application	IHC, E
Primary Accession	O15041
Other Accession	NP_036563.1 , NP_001171600.1 , 9723 , 20349 (mouse)
Reactivity	Human
Predicted	Mouse, Rat, Pig, Dog
Host	Goat
Clonality	Polyclonal
Concentration	0.5 mg/ml
Isotype	IgG
Calculated MW	89228

Semaphorin 3E (internal) Antibody (internal region) - Additional Information

Gene ID 9723

Other Names

Semaphorin-3E, SEMA3E, KIAA0331, SEMAH

Dilution

IHC~~1:100~500

E~~N/A

Format

0.5 mg/ml in Tris saline, 0.02% sodium azide, pH7.3 with 0.5% bovine serum albumin

Storage

Maintain refrigerated at 2-8°C for up to 6 months. For long term storage store at -20°C in small aliquots to prevent freeze-thaw cycles.

Precautions

Semaphorin 3E (internal) Antibody (internal region) is for research use only and not for use in diagnostic or therapeutic procedures.

Semaphorin 3E (internal) Antibody (internal region) - Protein Information

Name SEMA3E

Synonyms KIAA0331, SEMAH

Function

Plays an important role in signaling via the cell surface receptor PLXND1. Mediates reorganization of the actin cytoskeleton, leading to the retraction of cell projections. Promotes focal adhesion disassembly and inhibits adhesion of endothelial cells to the extracellular matrix. Regulates angiogenesis, both during embryogenesis and after birth. Can down-regulate sprouting angiogenesis. Required for normal vascular patterning during embryogenesis. Plays an important role in ensuring the specificity of synapse formation (By similarity).

Cellular Location

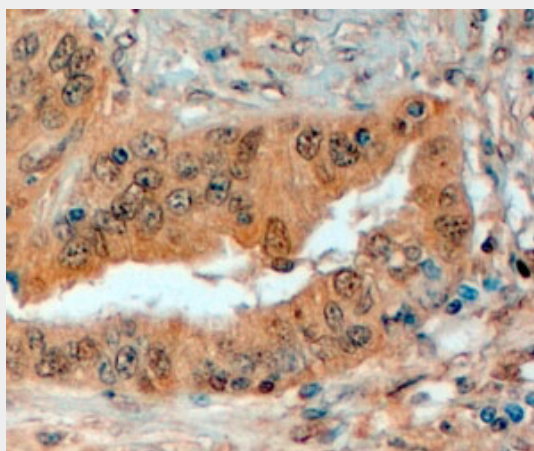
Secreted.

Semaphorin 3E (internal) Antibody (internal region) - Protocols

Provided below are standard protocols that you may find useful for product applications.

- [Western Blot](#)
- [Blocking Peptides](#)
- [Dot Blot](#)
- [Immunohistochemistry](#)
- [Immunofluorescence](#)
- [Immunoprecipitation](#)
- [Flow Cytometry](#)
- [Cell Culture](#)

Semaphorin 3E (internal) Antibody (internal region) - Images



AF2548a (4 µg/ml) staining of paraffin embedded Human Prostate. Steamed antigen retrieval with citrate buffer pH 6, HRP-staining.

Semaphorin 3E (internal) Antibody (internal region) - Background

This antibody is expected to recognise both reported isoforms (NP_036563.1; NP_001171600.1).

Semaphorin 3E (internal) Antibody (internal region) - References

Semaphorin 3E and plexin-D1 control vascular pattern independently of neuropilins. Gu C, Yoshida Y, Livet J, Reimert DV, Mann F, Merte J, Henderson CE, Jessell TM, Kolodkin AL, Ginty DD. Science. 2005 Jan 14;307(5707):265-8. Epub 2004 Nov 18. PMID: 15550623