

EPB41L4B / EHM2 Antibody (internal region)
Peptide-affinity purified goat antibody
Catalog # AF2651a**Specification**

EPB41L4B / EHM2 Antibody (internal region) - Product Information

Application	IHC, E
Primary Accession	Q9H329
Other Accession	NP_060894.2 , NP_061987.3 , 54566
Predicted	Human
Host	Goat
Clonality	Polyclonal
Concentration	0.5 mg/ml
Isotype	IgG
Calculated MW	99712

EPB41L4B / EHM2 Antibody (internal region) - Additional Information**Gene ID** 54566**Other Names**

Band 4.1-like protein 4B, FERM-containing protein CG1, Protein EHM2, EPB41L4B, EHM2

Dilution

IHC~~1:100~500

E~~N/A

Format

0.5 mg/ml in Tris saline, 0.02% sodium azide, pH7.3 with 0.5% bovine serum albumin

Storage

Maintain refrigerated at 2-8°C for up to 6 months. For long term storage store at -20°C in small aliquots to prevent freeze-thaw cycles.

Precautions

EPB41L4B / EHM2 Antibody (internal region) is for research use only and not for use in diagnostic or therapeutic procedures.

EPB41L4B / EHM2 Antibody (internal region) - Protein Information**Name** EPB41L4B ([HGNC:19818](#))**Function**

Up-regulates the activity of the Rho guanine nucleotide exchange factor ARHGEF18 (By similarity). Involved in the regulation of the circumferential actomyosin belt in epithelial cells (PubMed:22006950). Promotes cellular adhesion, migration and motility in vitro and may play a role in wound healing (PubMed:23664528). May have a role in mediating cytoskeletal changes associated with steroid- induced cell differentiation (PubMed:14521927).

Cellular Location

Cytoplasm. Cell junction, tight junction Note=Accumulates along apical cell-cell boundaries and is also detected in the cytoplasm in a punctate manner.

Tissue Location

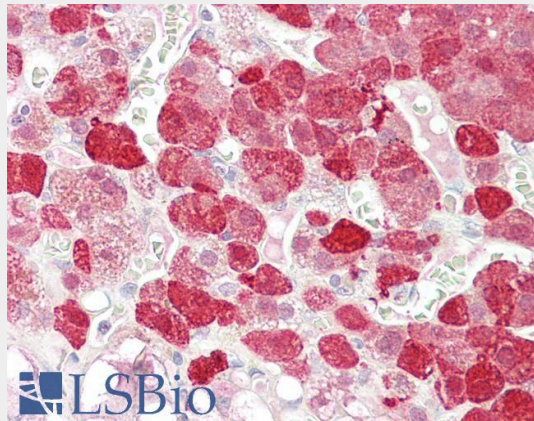
Expressed at higher levels in acute wounds than chronic wounds with increased expression in healing wounds, especially at the leading wound edge (PubMed:23664528). Isoform 1 is highly expressed in brain. Isoform 2 is highly expressed in testis with lower levels in prostate and breast (PubMed:14521927)

EPB41L4B / EHM2 Antibody (internal region) - Protocols

Provided below are standard protocols that you may find useful for product applications.

- [Western Blot](#)
- [Blocking Peptides](#)
- [Dot Blot](#)
- [Immunohistochemistry](#)
- [Immunofluorescence](#)
- [Immunoprecipitation](#)
- [Flow Cytometry](#)
- [Cell Culture](#)

EPB41L4B / EHM2 Antibody (internal region) - Images



AF2651a (3.75 µg/ml) staining of paraffin embedded Human Adrenal Gland. Steamed antigen retrieval with citrate buffer pH 6, AP-staining.

EPB41L4B / EHM2 Antibody (internal region) - Background

This antibody is expected to recognise both reported isoforms (NP_060894.2; NP_061987.3).

EPB41L4B / EHM2 Antibody (internal region) - References

Protein 4.1, a component of the erythrocyte membrane skeleton and its related homologue proteins forming the protein 4.1/FERM superfamily. Diakowski W, Grzybek M, Sikorski AF. Folia Histochem Cytobiol. 2006;44(4):231-48. Review. PMID: 17219717