

**apolipoprotein L6 Antibody (internal region, near N-Term)**  
**Peptide-affinity purified goat antibody**  
**Catalog # AF2806a****Specification**

---

**apolipoprotein L6 Antibody (internal region, near N-Term) - Product Information**

Application	WB, IHC, E
Primary Accession	<a href="#">O9BWW8</a>
Other Accession	<a href="#">NP_085144.1</a> , <a href="#">80830</a>
Reactivity	Human
Host	Goat
Clonality	Polyclonal
Concentration	0.5 mg/ml
Isotype	IgG
Calculated MW	38128

**apolipoprotein L6 Antibody (internal region, near N-Term) - Additional Information****Gene ID** 80830**Other Names**

Apolipoprotein L6, Apolipoprotein L-VI, ApoL-VI, APOL6

**Dilution**WB~~1:1000  
IHC~~1:100~500  
E~~N/A**Format**

0.5 mg/ml in Tris saline, 0.02% sodium azide, pH7.3 with 0.5% bovine serum albumin

**Storage**

Maintain refrigerated at 2-8°C for up to 6 months. For long term storage store at -20°C in small aliquots to prevent freeze-thaw cycles.

**Precautions**

apolipoprotein L6 Antibody (internal region, near N-Term) is for research use only and not for use in diagnostic or therapeutic procedures.

**apolipoprotein L6 Antibody (internal region, near N-Term) - Protein Information****Name** APOL6**Function**

May affect the movement of lipids in the cytoplasm or allow the binding of lipids to organelles.

**Cellular Location**

Cytoplasm.

#### **Tissue Location**

Widely expressed; highly expressed in the uterus, fetal brain and spinal cord, also detected in heart, liver, lung, colon, spleen, thymus, prostate, placenta, adrenal gland, salivary and mammary gland

#### **apolipoprotein L6 Antibody (internal region, near N-Term) - Protocols**

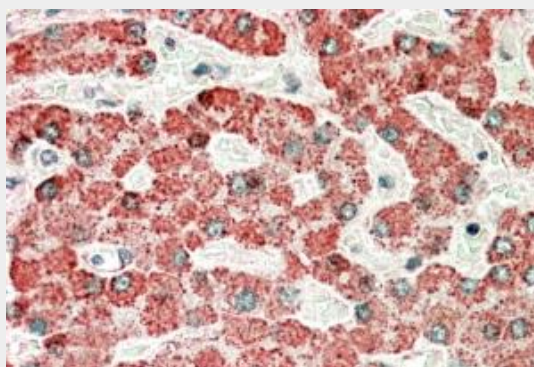
Provided below are standard protocols that you may find useful for product applications.

- [Western Blot](#)
- [Blocking Peptides](#)
- [Dot Blot](#)
- [Immunohistochemistry](#)
- [Immunofluorescence](#)
- [Immunoprecipitation](#)
- [Flow Cytometry](#)
- [Cell Culture](#)

#### **apolipoprotein L6 Antibody (internal region, near N-Term) - Images**



AF2806a (1 µg/ml) staining of Human Kidney lysate (35 µg protein in RIPA buffer). Primary incubation was 1 hour. Detected by chemiluminescence.



AF2806a (5 µg/ml) staining of paraffin embedded Human Liver. Microwaved antigen retrieval with Tris/EDTA buffer pH9, HRP-staining.

#### **apolipoprotein L6 Antibody (internal region, near N-Term) - References**

The apolipoprotein L gene cluster has emerged recently in evolution and is expressed in human

vascular tissue. Monajemi H, Fontijn RD, Pannekoek H, Horrevoets AJ. Genomics. 2002 Apr;79(4):539-46. PMID: 11944986