

PCSK6 Antibody (internal region)
Peptide-affinity purified goat antibody
Catalog # AF2839a

Specification

PCSK6 Antibody (internal region) - Product Information

Application	IHC, E
Primary Accession	P29122
Other Accession	NP_002561.1 , NP_612192.1 , NP_612195.1 , NP_612197.1 , NP_612196.1 , NP_612198.2 , NP_612193.1 , NP_612194.1 , 5046
Reactivity	Human
Host	Goat
Clonality	Polyclonal
Concentration	0.5 mg/ml
Isotype	IgG
Calculated MW	106420

PCSK6 Antibody (internal region) - Additional Information

Gene ID 5046

Other Names

Proprotein convertase subtilisin/kexin type 6, 3.4.21.-, Paired basic amino acid cleaving enzyme 4, Subtilisin-like proprotein convertase 4, SPC4, Subtilisin/kexin-like protease PACE4, PCSK6, PACE4

Dilution

IHC~~1:100~500

E~~N/A

Format

0.5 mg/ml in Tris saline, 0.02% sodium azide, pH7.3 with 0.5% bovine serum albumin

Storage

Maintain refrigerated at 2-8°C for up to 6 months. For long term storage store at -20°C in small aliquots to prevent freeze-thaw cycles.

Precautions

PCSK6 Antibody (internal region) is for research use only and not for use in diagnostic or therapeutic procedures.

PCSK6 Antibody (internal region) - Protein Information

Name PCSK6

Synonyms PACE4

Function

Serine endoprotease that processes various proproteins by cleavage at paired basic amino acids, recognizing the RXXX[KR]R consensus motif. Likely functions in the constitutive secretory pathway, with unique restricted distribution in both neuroendocrine and non-neuroendocrine tissues.

Cellular Location

[Isoform PACE4A-I]: Secreted. [Isoform PACE4C]: Endoplasmic reticulum. Note=Not secreted, remains probably in zymogen form in endoplasmic reticulum [Isoform PACE4E-I]: Endomembrane system; Peripheral membrane protein. Note=Retained intracellularly probably through a hydrophobic cluster in their C-terminus [Isoform PACE4B]: Secreted.

Tissue Location

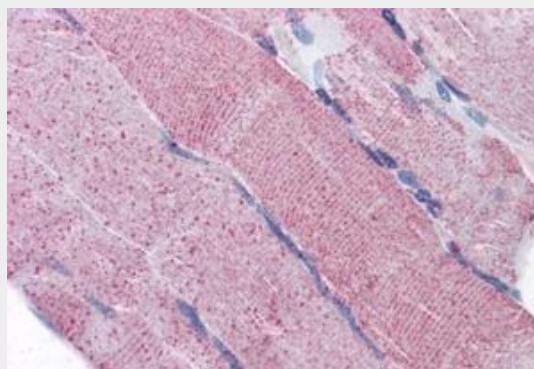
Each PACE4 isoform exhibits a unique restricted distribution. Isoform PACE4A-I is expressed in heart, brain, placenta, lung, skeletal muscle, kidney, pancreas, but at comparatively higher levels in the liver. Isoform PACE4A-II is at least expressed in placenta. Isoform PACE4B was only found in the embryonic kidney cell line from which it was isolated. Isoform PACE4C and isoform PACE4D are expressed in placenta. Isoform PACE4E-I is expressed in cerebellum, placenta and pituitary. Isoform PACE4E-II is at least present in cerebellum

PCSK6 Antibody (internal region) - Protocols

Provided below are standard protocols that you may find useful for product applications.

- [Western Blot](#)
- [Blocking Peptides](#)
- [Dot Blot](#)
- [Immunohistochemistry](#)
- [Immunofluorescence](#)
- [Immunoprecipitation](#)
- [Flow Cytometry](#)
- [Cell Culture](#)

PCSK6 Antibody (internal region) - Images



AF2839a (5 µg/ml) staining of paraffin embedded Human Skeletal Muscle. Steamed antigen retrieval with citrate buffer pH 6, AP-staining.

PCSK6 Antibody (internal region) - Background

This antibody is expected to recognize reported isoforms a, b, g and h (NP_002561.1; NP_612192.1; NP_612193.1; NP_612194.1 resp.).

PCSK6 Antibody (internal region) - References

Hepatic proprotein convertases modulate HDL metabolism. Jin W, Wang X, Millar JS, Quertermous T, Rothblat GH, Glick JM, Rader DJ. *Cell Metab.* 2007 Aug;6(2):129-36. PMID: 17681148