

**SFRP4 Antibody (internal region)**  
**Peptide-affinity purified goat antibody**  
**Catalog # AF2890a****Specification**

---

**SFRP4 Antibody (internal region) - Product Information**

Application	WB, IHC, E
Primary Accession	<a href="#">Q6FHJ7</a>
Other Accession	<a href="#">NP_003005.2</a> , <a href="#">6424</a> , <a href="#">20379 (mouse)</a> , <a href="#">89803 (rat)</a>
Reactivity	Human
Predicted	Mouse, Rat, Pig
Host	Goat
Clonality	Polyclonal
Concentration	0.5 mg/ml
Isotype	IgG
Calculated MW	39827

**SFRP4 Antibody (internal region) - Additional Information****Gene ID** 6424**Other Names**

Secreted frizzled-related protein 4, sFRP-4, Frizzled protein, human endometrium, FrpHE, SFRP4, FRPHE

**Dilution**WB~~1:1000  
IHC~~1:100~500  
E~~N/A**Format**

0.5 mg/ml in Tris saline, 0.02% sodium azide, pH7.3 with 0.5% bovine serum albumin

**Storage**

Maintain refrigerated at 2-8°C for up to 6 months. For long term storage store at -20°C in small aliquots to prevent freeze-thaw cycles.

**Precautions**

SFRP4 Antibody (internal region) is for research use only and not for use in diagnostic or therapeutic procedures.

**SFRP4 Antibody (internal region) - Protein Information****Name** SFRP4**Synonyms** FRPHE

**Function**

Soluble frizzled-related proteins (sFRPS) function as modulators of Wnt signaling through direct interaction with Wnts. They have a role in regulating cell growth and differentiation in specific cell types (By similarity). SFRP4 plays a role in bone morphogenesis. May also act as a regulator of adult uterine morphology and function. May also increase apoptosis during ovulation possibly through modulation of FZ1/FZ4/WNT4 signaling (By similarity). Has phosphaturic effects by specifically inhibiting sodium-dependent phosphate uptake (PubMed:<a href="http://www.uniprot.org/citations/12952927" target="\_blank">12952927</a>).

**Cellular Location**

Secreted. Note=Cytoplasmic in ovarian tumor cells

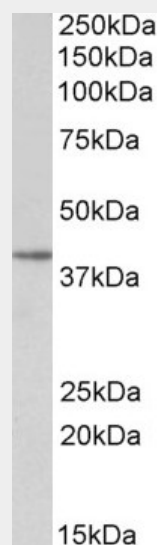
**Tissue Location**

Expressed in mesenchymal cells. Highly expressed in the stroma of proliferative endometrium. Expressed in cardiomyocytes Shows moderate to strong expression in ovarian tumors with expression increasing as the tumor stage increases. In ovarian tumors, expression levels are inversely correlated with expression of CTNNB1 (at protein level).

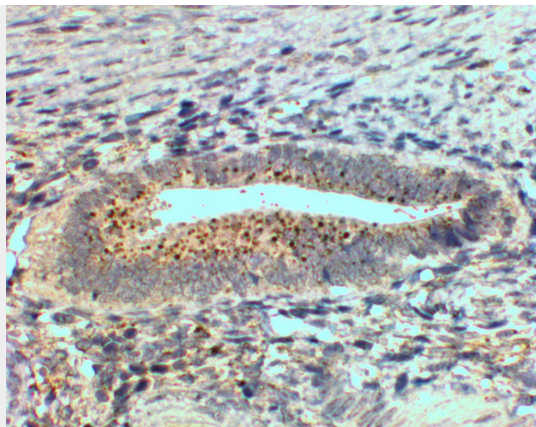
**SFRP4 Antibody (internal region) - Protocols**

Provided below are standard protocols that you may find useful for product applications.

- [Western Blot](#)
- [Blocking Peptides](#)
- [Dot Blot](#)
- [Immunohistochemistry](#)
- [Immunofluorescence](#)
- [Immunoprecipitation](#)
- [Flow Cytometry](#)
- [Cell Culture](#)

**SFRP4 Antibody (internal region) - Images**

AF2890a (0.5 µg/ml) staining of Human Uterus lysate (35 µg protein in RIPA buffer). Primary incubation was 1 hour. Detected by chemiluminescence.



AF2890a (2µg/ml) staining of paraffin embedded Human Uterus. Steamed antigen retrieval with Tris/EDTA buffer pH 9, HRP-staining.

#### **SFRP4 Antibody (internal region) - References**

Dnmt3b promotes tumorigenesis in vivo by gene-specific de novo methylation and transcriptional silencing. Linhart HG, Lin H, Yamada Y, Moran E, Steine EJ, Gokhale S, Lo G, Cantu E, Ehrich M, He T, Meissner A, Jaenisch R. Genes Dev. 2007 Dec 1;21(23):3110-22. PMID: 18056424