

**SPARTIN Antibody (internal region)**  
**Peptide-affinity purified goat antibody**  
**Catalog # AF2902a****Specification**

---

**SPARTIN Antibody (internal region) - Product Information**

Application	WB, IF, E
Primary Accession	<a href="#">Q8N0X7</a>
Other Accession	<a href="#">NP_055902.1</a> , <a href="#">23111</a>
Reactivity	Human
Host	Goat
Clonality	Polyclonal
Concentration	0.5 mg/ml
Isotype	IgG
Calculated MW	72833

**SPARTIN Antibody (internal region) - Additional Information****Gene ID** 23111**Other Names**

Spartin, Spastic paraplegia 20 protein, Trans-activated by hepatitis C virus core protein 1, SPG20, KIAA0610, TAHCCP1

**Dilution**WB~~1:1000  
IF~~1:50~200  
E~~N/A**Format**

0.5 mg/ml in Tris saline, 0.02% sodium azide, pH7.3 with 0.5% bovine serum albumin

**Storage**

Maintain refrigerated at 2-8°C for up to 6 months. For long term storage store at -20°C in small aliquots to prevent freeze-thaw cycles.

**Precautions**

SPARTIN Antibody (internal region) is for research use only and not for use in diagnostic or therapeutic procedures.

**SPARTIN Antibody (internal region) - Protein Information****Name** SPART ([HGNC:18514](#))**Function**

Lipophagy receptor that plays an important role in lipid droplet (LD) turnover in motor neurons (PubMed:&lt;a href="http://www.uniprot.org/citations/37443287" target="\_blank"&gt;37443287&lt;/a&gt;).

Localizes to LDs and interacts with components of the autophagy machinery, such as MAP1LC3A/C proteins to deliver LDs to autophagosomes for degradation via lipophagy (PubMed:<a href="http://www.uniprot.org/citations/37443287" target="\_blank">37443287</a>). Lipid transfer protein required for lipid droplet degradation, including by lipophagy (PubMed:<a href="http://www.uniprot.org/citations/38190532" target="\_blank">38190532</a>). Can bind and transfer all lipid species found in lipid droplets, from phospholipids to triglycerides and sterol esters but the direction of lipid transfer by spartin and its cargos are unknown (PubMed:<a href="http://www.uniprot.org/citations/38190532" target="\_blank">38190532</a>). May be implicated in endosomal trafficking, or microtubule dynamics, or both. Participates in cytokinesis (PubMed:<a href="http://www.uniprot.org/citations/20719964" target="\_blank">20719964</a>).

#### Cellular Location

Cytoplasm. Midbody. Lipid droplet Note=Transiently associated with endosomes (PubMed:19580544) Colocalized with IST1 to the ends of Flemming bodies during cytokinesis (PubMed:20719964).

#### Tissue Location

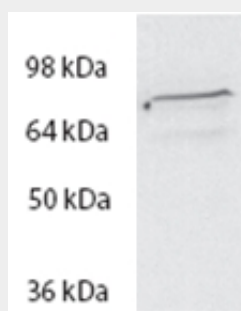
Ubiquitously expressed, with highest levels of expression detected in adipose tissue

### SPARTIN Antibody (internal region) - Protocols

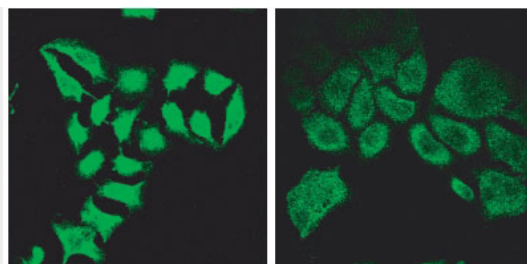
Provided below are standard protocols that you may find useful for product applications.

- [Western Blot](#)
- [Blocking Peptides](#)
- [Dot Blot](#)
- [Immunohistochemistry](#)
- [Immunofluorescence](#)
- [Immunoprecipitation](#)
- [Flow Cytometry](#)
- [Cell Culture](#)

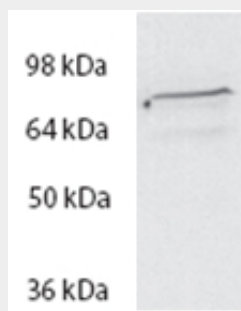
### SPARTIN Antibody (internal region) - Images



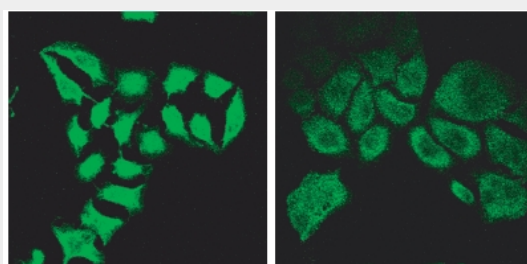
AF2902a (2 µg/ml) staining of HeLa lysate (35 µg protein in RIPA buffer). Primary incubation was 1 hour. Detected by chemiluminescence.



AF2902a (2 µg/ml) staining of methanol-fixed HeLa before (left) and after (right) introduction of siRNA.



EB09136 (2µg/ml) staining of HeLa lysate (35µg protein in RIPA buffer). Primary incubation was 1 hour. Detected by chemiluminescence.



EB09136 (2µg/ml) staining of methanol-fixed HeLa before (left) and after (right) introduction of siRNA.

#### **SPARTIN Antibody (internal region) - References**

The hereditary spastic paraplegia protein spartin localises to mitochondria Lu J, Rashid F, Byrne PC. J Neurochem. 2006 Sep;98(6):1908-19. PMID: 16945107