

ETF-4 / TEAD2 Antibody (internal region)
Peptide-affinity purified goat antibody
Catalog # AF2941a**Specification**

ETF-4 / TEAD2 Antibody (internal region) - Product Information

Application	WB, E
Primary Accession	Q15562
Other Accession	NP_003589.1 , 8463 , 21677 (mouse) , 294299 (rat)
Reactivity	Human
Predicted	Mouse, Rat, Dog
Host	Goat
Clonality	Polyclonal
Concentration	0.5 mg/ml
Isotype	IgG
Calculated MW	49243

ETF-4 / TEAD2 Antibody (internal region) - Additional Information**Gene ID** 8463**Other Names**

Transcriptional enhancer factor TEF-4, TEA domain family member 2, TEAD-2, TEAD2, TEF4

Dilution

WB~~1:1000

E~~N/A

Format

0.5 mg/ml in Tris saline, 0.02% sodium azide, pH7.3 with 0.5% bovine serum albumin

Storage

Maintain refrigerated at 2-8°C for up to 6 months. For long term storage store at -20°C in small aliquots to prevent freeze-thaw cycles.

Precautions

ETF-4 / TEAD2 Antibody (internal region) is for research use only and not for use in diagnostic or therapeutic procedures.

ETF-4 / TEAD2 Antibody (internal region) - Protein Information**Name** TEAD2**Synonyms** TEF4**Function**

Transcription factor which plays a key role in the Hippo signaling pathway, a pathway involved in organ size control and tumor suppression by restricting proliferation and promoting apoptosis. The core of this pathway is composed of a kinase cascade wherein MST1/MST2, in complex with its regulatory protein SAV1, phosphorylates and activates LATS1/2 in complex with its regulatory protein MOB1, which in turn phosphorylates and inactivates YAP1 oncoprotein and WWTR1/TAZ. Acts by mediating gene expression of YAP1 and WWTR1/TAZ, thereby regulating cell proliferation, migration and epithelial mesenchymal transition (EMT) induction. Binds to the SPH and GT-IIC 'enhancers' (5'-GTGGAATGT-3'). May be involved in the gene regulation of neural development. Binds to the M-CAT motif.

Cellular Location

Nucleus.

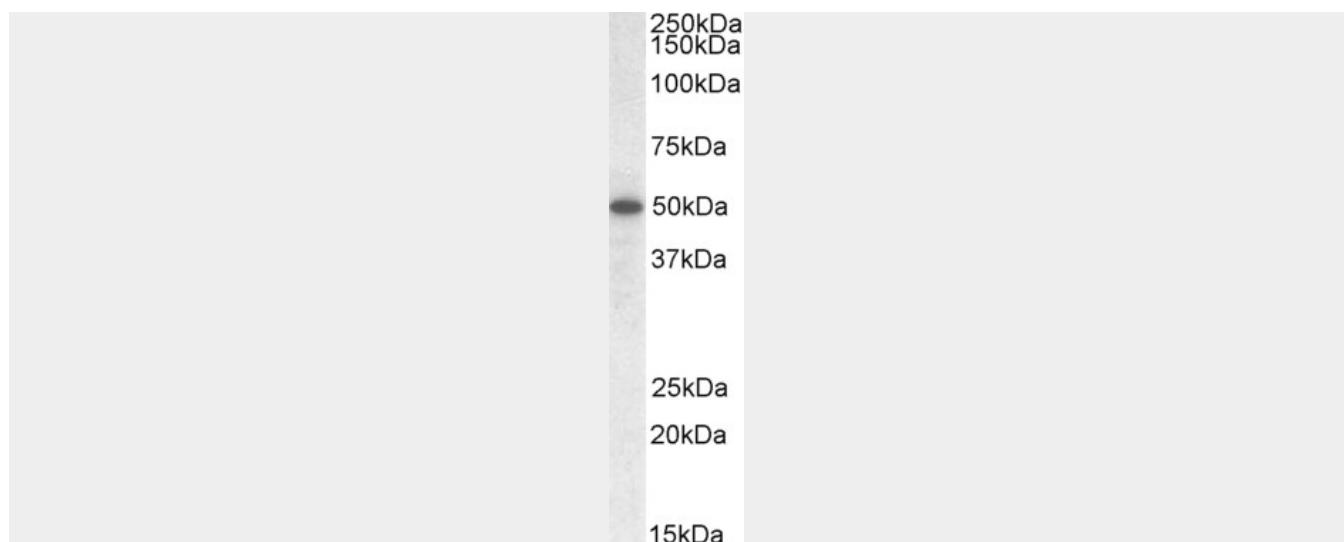
ETF-4 / TEAD2 Antibody (internal region) - Protocols

Provided below are standard protocols that you may find useful for product applications.

- [Western Blot](#)
- [Blocking Peptides](#)
- [Dot Blot](#)
- [Immunohistochemistry](#)
- [Immunofluorescence](#)
- [Immunoprecipitation](#)
- [Flow Cytometry](#)
- [Cell Culture](#)

ETF-4 / TEAD2 Antibody (internal region) - Images

AF2941a (1 µg/ml) staining of Human Ileum lysate (35 µg protein in RIPA buffer). Primary incubation was 1 hour. Detected by chemiluminescence.



EB09259 (1 μ g/ml) staining of Human Colon lysate (35 μ g protein in RIPA buffer). Detected by chemiluminescence.

ETF-4 / TEAD2 Antibody (internal region) - Background

This antibody is not expected to cross-react with other TEAD proteins.

ETF-4 / TEAD2 Antibody (internal region) - References

Redundant roles of Tead1 and Tead2 in notochord development and the regulation of cell proliferation and survival. Sawada A, Kiyonari H, Ukita K, Nishioka N, Imuta Y, Sasaki H. Molecular and cellular biology 2008 May 28 (10): 3177-89. PMID: 18332127