

Copine 1 Antibody (C-Term)
Peptide-affinity purified goat antibody
Catalog # AF2967a

Specification

Copine 1 Antibody (C-Term) - Product Information

Application	WB, E
Primary Accession	Q99829
Other Accession	NP_690902.1 , NP_003906.2 , 8904
Reactivity	Human
Predicted	Dog
Host	Goat
Clonality	Polyclonal
Concentration	0.5 mg/ml
Isotype	IgG
Calculated MW	59059

Copine 1 Antibody (C-Term) - Additional Information

Gene ID 8904

Other Names

Copine-1, Copine I, CPNE1, CPN1

Dilution

WB~~1:1000

E~~N/A

Format

0.5 mg/ml in Tris saline, 0.02% sodium azide, pH7.3 with 0.5% bovine serum albumin

Storage

Maintain refrigerated at 2-8°C for up to 6 months. For long term storage store at -20°C in small aliquots to prevent freeze-thaw cycles.

Precautions

Copine 1 Antibody (C-Term) is for research use only and not for use in diagnostic or therapeutic procedures.

Copine 1 Antibody (C-Term) - Protein Information

Name CPNE1 ([HGNC:2314](#))

Synonyms CPN1

Function

Calcium-dependent phospholipid-binding protein that plays a role in calcium-mediated intracellular

processes (PubMed:14674885). Involved in the TNF-alpha receptor signaling pathway in a calcium- dependent manner (PubMed:14674885). Exhibits calcium-dependent phospholipid binding properties (PubMed:19539605, PubMed:9430674). Plays a role in neuronal progenitor cell differentiation; induces neurite outgrowth via a AKT-dependent signaling cascade and calcium- independent manner (PubMed:23263657, PubMed:25450385). May recruit target proteins to the cell membrane in a calcium-dependent manner (PubMed:12522145). May function in membrane trafficking (PubMed:9430674). Involved in TNF-alpha-induced NF-kappa-B transcriptional repression by inducing endoprotease processing of the transcription factor NF-kappa-B p65/RELA subunit (PubMed:18212740). Also induces endoprotease processing of NF-kappa-B p50/NFKB1, p52/NFKB2, RELB and REL (PubMed:18212740).

Cellular Location

Nucleus. Cytoplasm. Cell membrane Note=Translocates to the cell membrane in a calcium-dependent manner (PubMed:21087455, PubMed:25450385).

Tissue Location

Expressed in neutrophils (at protein level) (PubMed:12949241). Widely expressed. Expressed in the brain. Expressed in neutrophil precursors from bone marrow and peripheral blood (PubMed:12949241).

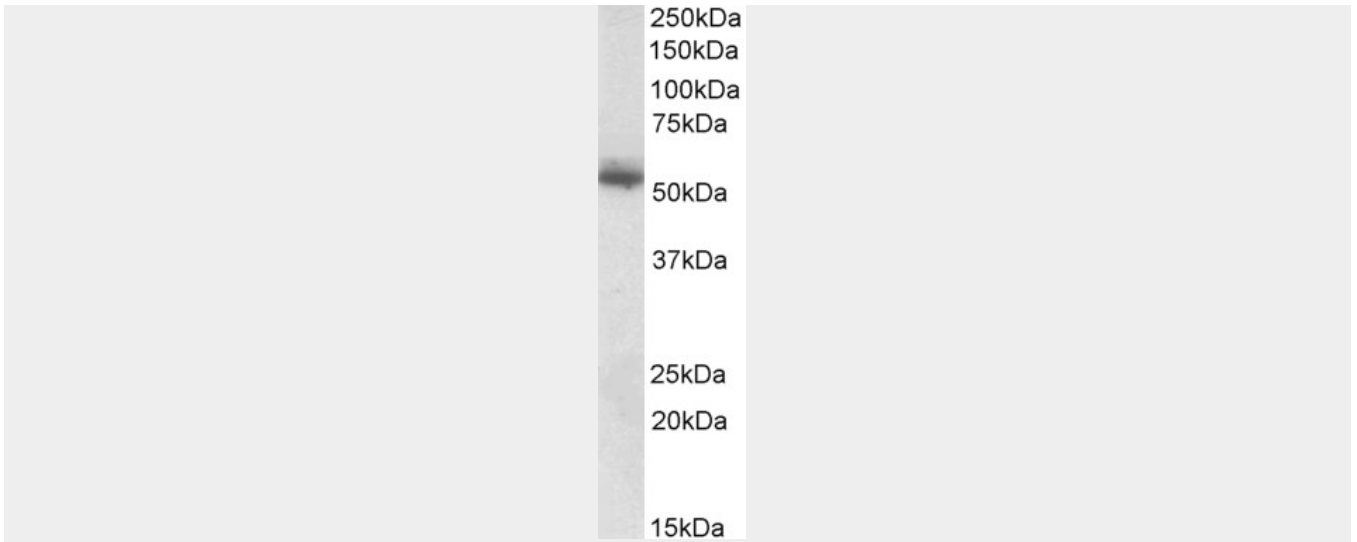
Copine 1 Antibody (C-Term) - Protocols

Provided below are standard protocols that you may find useful for product applications.

- [Western Blot](#)
- [Blocking Peptides](#)
- [Dot Blot](#)
- [Immunohistochemistry](#)
- [Immunofluorescence](#)
- [Immunoprecipitation](#)
- [Flow Cytometry](#)
- [Cell Culture](#)

Copine 1 Antibody (C-Term) - Images





AF2967a (0.1 µg/ml) staining of Human Skin lysate (35 µg protein in RIPA buffer). Primary incubation was 1 hour. Detected by chemiluminescence.

Copine 1 Antibody (C-Term) - Background

This antibody is expected to recognize isoform a and b (NP_003906.2; NP_690902.1). Reported variants represent identical protein: NP_690905.1, NP_690902.1, NP_690903.1, NP_690906.1, NP_690904.1, NP_690907.1, NP_690908.1.

Copine 1 Antibody (C-Term) - References

Upregulation of Copine1 in trabecular meshwork cells of POAG patients: a membrane proteomics approach. Zhang Y, Gao Q, Duan S, He Y, Sun X, Jiang R, Duan Y, Zhong X, Ge J. Molecular vision 2008 14 : 1028-36. PMID: 18523666