

WNT15 / WNT9B Antibody (internal region)
Peptide-affinity purified goat antibody
Catalog # AF2974a**Specification**

WNT15 / WNT9B Antibody (internal region) - Product Information

Application	WB, E
Primary Accession	O14905
Other Accession	NP_003387.1 , 7484 , 22412 (mouse) , 303586 (rat)
Reactivity	Human, Mouse
Predicted	Rat
Host	Goat
Clonality	Polyclonal
Concentration	0.5 mg/ml
Isotype	IgG
Calculated MW	39001

WNT15 / WNT9B Antibody (internal region) - Additional Information**Gene ID** 7484**Other Names**

Protein Wnt-9b, Protein Wnt-14b, Protein Wnt-15, WNT9B, WNT14B, WNT15

Dilution

WB~~1:1000

E~~N/A

Format

0.5 mg/ml in Tris saline, 0.02% sodium azide, pH7.3 with 0.5% bovine serum albumin

Storage

Maintain refrigerated at 2-8°C for up to 6 months. For long term storage store at -20°C in small aliquots to prevent freeze-thaw cycles.

Precautions

WNT15 / WNT9B Antibody (internal region) is for research use only and not for use in diagnostic or therapeutic procedures.

WNT15 / WNT9B Antibody (internal region) - Protein Information**Name** WNT9B**Synonyms** WNT14B {ECO:0000303|PubMed:11604992}, WN**Function**

Ligand for members of the frizzled family of seven transmembrane receptors (Probable). Functions in the canonical Wnt/beta-catenin signaling pathway. Required for normal embryonic kidney development, and for normal development of the urogenital tract, including uterus and part of the oviduct and the upper vagina in females, and epididymis and vas deferens in males. Activates a signaling cascade in the metanephric mesenchyme that induces tubulogenesis. Acts upstream of WNT4 in the signaling pathways that mediate development of kidney tubules and the Mullerian ducts. Plays a role in craniofacial development and is required for normal fusion of the palate during embryonic development (By similarity).

Cellular Location

Secreted, extracellular space, extracellular matrix. Secreted

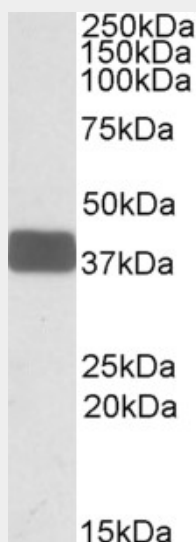
Tissue Location

Moderately expressed in fetal kidney and adult kidney. Also found in brain

WNT15 / WNT9B Antibody (internal region) - Protocols

Provided below are standard protocols that you may find useful for product applications.

- [Western Blot](#)
- [Blocking Peptides](#)
- [Dot Blot](#)
- [Immunohistochemistry](#)
- [Immunofluorescence](#)
- [Immunoprecipitation](#)
- [Flow Cytometry](#)
- [Cell Culture](#)

WNT15 / WNT9B Antibody (internal region) - Images

AF2974a (0.3 µg/ml) staining of Human Brain Cerebellum lysate (35 µg protein in RIPA buffer). Primary incubation was 1 hour. Detected by chemiluminescence.

WNT15 / WNT9B Antibody (internal region) - References

Variation in WNT genes is associated with non-syndromic cleft lip with or without cleft palate. Chiquet BT, Blanton SH, Burt A, Ma D, Stal S, Mulliken JB, Hecht JT. Hum Mol Genet. 2008 Jul

15;17(14):2212-8. Epub 2008 Apr 14. PMID: 18413325