

TRIB1 / SKIP1 Antibody (internal region)
Peptide-affinity purified goat antibody
Catalog # AF3018a**Specification**

TRIB1 / SKIP1 Antibody (internal region) - Product Information

Application	WB, E
Primary Accession	O96RU8
Other Accession	NP_079471.1 , 10221
Reactivity	Human
Predicted	Mouse, Rat, Pig, Dog
Host	Goat
Clonality	Polyclonal
Concentration	0.5 mg/ml
Isotype	IgG
Calculated MW	41009

TRIB1 / SKIP1 Antibody (internal region) - Additional Information**Gene ID** 10221**Other Names**

Tribbles homolog 1, TRB-1, G-protein-coupled receptor-induced gene 2 protein, GIG-2, SKIP1, TRIB1 (http://www.genenames.org/cgi-bin/gene_symbol_report?hgnc_id=16891)
target="_blank">HGNC:16891)

Dilution

WB~~1:1000

E~~N/A

Format

0.5 mg/ml in Tris saline, 0.02% sodium azide, pH7.3 with 0.5% bovine serum albumin

Storage

Maintain refrigerated at 2-8°C for up to 6 months. For long term storage store at -20°C in small aliquots to prevent freeze-thaw cycles.

Precautions

TRIB1 / SKIP1 Antibody (internal region) is for research use only and not for use in diagnostic or therapeutic procedures.

TRIB1 / SKIP1 Antibody (internal region) - Protein Information**Name** TRIB1 ([HGNC:16891](#))**Function**

Adaptor protein involved in protein degradation by interacting with COP1 ubiquitin ligase

(PubMed:27041596). The COP1- binding motif is masked by autoinhibitory interactions with the protein kinase domain (PubMed:26455797). Serves to alter COP1 substrate specificity by directing the activity of COP1 toward CEBPA (PubMed:27041596). Binds selectively the recognition sequence of CEBPA (PubMed:26455797). Regulates myeloid cell differentiation by altering the expression of CEBPA in a COP1-dependent manner (By similarity). Controls macrophage, eosinophil and neutrophil differentiation via the COP1-binding domain (By similarity). Interacts with MAPK kinases and regulates activation of MAP kinases, but has no kinase activity (PubMed:15299019, PubMed:26455797).

Tissue Location

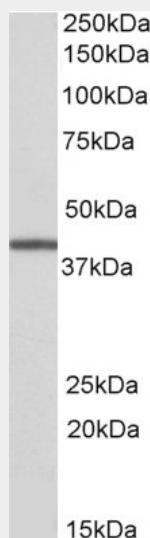
Expressed in most human tissues with the highest levels in skeletal muscle, thyroid gland, pancreas, peripheral blood leukocytes, and bone marrow.

TRIB1 / SKIP1 Antibody (internal region) - Protocols

Provided below are standard protocols that you may find useful for product applications.

- [Western Blot](#)
- [Blocking Peptides](#)
- [Dot Blot](#)
- [Immunohistochemistry](#)
- [Immunofluorescence](#)
- [Immunoprecipitation](#)
- [Flow Cytometry](#)
- [Cell Culture](#)

TRIB1 / SKIP1 Antibody (internal region) - Images



EB9630 (0.3 µg/ml) staining of Human Bone Marrow lysate (35 µg protein in RIPA buffer). Primary incubation was 1 hour. Detected by chemiluminescence.

TRIB1 / SKIP1 Antibody (internal region) - References

Human tribbles, a protein family controlling mitogen-activated protein kinase cascades Kiss-Toth E, Bagstaff SM, Sung HY, Jozsa V, Dempsey C, Caunt JC, Oxley KM, Wyllie DH, Polgar T, Harte M, O'Neill LA, Qwarnstrom EE, Dower SK J. Biol. Chem. 2004 Oct 279 (41): 42703-8 PMID: 15299019