

DAPP1 / BAM32 Antibody (internal region, near C-Term)
Peptide-affinity purified goat antibody
Catalog # AF3049a

Specification

DAPP1 / BAM32 Antibody (internal region, near C-Term) - Product Information

Application	WB, E
Primary Accession	O9UN19
Other Accession	NP_055210.2 , 27071
Reactivity	Human
Predicted	Dog
Host	Goat
Clonality	Polyclonal
Concentration	0.5 mg/ml
Isotype	IgG
Calculated MW	32194

DAPP1 / BAM32 Antibody (internal region, near C-Term) - Additional Information

Gene ID 27071

Other Names

Dual adapter for phosphotyrosine and 3-phosphotyrosine and 3-phosphoinositide, hDAPP1, B lymphocyte adapter protein Bam32, B-cell adapter molecule of 32 kDa, DAPP1, BAM32

Dilution

WB~~1:1000

E~~N/A

Format

0.5 mg/ml in Tris saline, 0.02% sodium azide, pH7.3 with 0.5% bovine serum albumin

Storage

Maintain refrigerated at 2-8°C for up to 6 months. For long term storage store at -20°C in small aliquots to prevent freeze-thaw cycles.

Precautions

DAPP1 / BAM32 Antibody (internal region, near C-Term) is for research use only and not for use in diagnostic or therapeutic procedures.

DAPP1 / BAM32 Antibody (internal region, near C-Term) - Protein Information

Name DAPP1

Synonyms BAM32

Function

May act as a B-cell-associated adapter that regulates B-cell antigen receptor (BCR)-signaling downstream of PI3K.

Cellular Location

Cytoplasm. Membrane; Peripheral membrane protein. Note=Membrane-associated after cell stimulation leading to its translocation

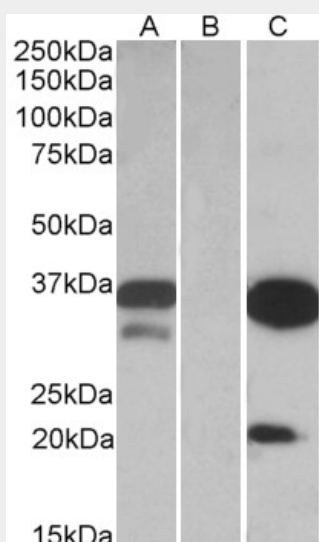
Tissue Location

Highly expressed in placenta and lung, followed by brain, heart, kidney, liver, pancreas and skeletal muscle. Expressed by B-lymphocytes, but not T-lymphocytes or nonhematopoietic cells

DAPP1 / BAM32 Antibody (internal region, near C-Term) - Protocols

Provided below are standard protocols that you may find useful for product applications.

- [Western Blot](#)
- [Blocking Peptides](#)
- [Dot Blot](#)
- [Immunohistochemistry](#)
- [Immunofluorescence](#)
- [Immunoprecipitation](#)
- [Flow Cytometry](#)
- [Cell Culture](#)

DAPP1 / BAM32 Antibody (internal region, near C-Term) - Images

HEK293 lysate (10ug protein in RIPA buffer) over expressing Human DAPP1 with DYKDDDDK tag probed with AF3049a (0.1ug/ml) in Lane A and probed with anti- DYKDDDDK Tag (1/3000) in lane C. Mock-transfected HEK293 probed with AF3049a (1mg/ml) in Lane B. Primary incubations were for 1 hour. Detected by chemiluminescence.

DAPP1 / BAM32 Antibody (internal region, near C-Term) - References

The B lymphocyte adaptor molecule of 32 kilodaltons (Bam32) regulates B cell antigen receptor internalization. Niir H, Allam A, Stoddart A, Brodsky FM, Marshall AJ, Clark EA, Journal of immunology (Baltimore, Md. : 1950) 2004 Nov 173 (9): 5601-9. PMID: 15494510