

**GOLPH3 Antibody (internal region)**  
**Peptide-affinity purified goat antibody**  
**Catalog # AF3087a****Specification**

---

**GOLPH3 Antibody (internal region) - Product Information**

Application	WB, E
Primary Accession	<a href="#">O9H4A6</a>
Other Accession	<a href="#">NP_071413.1</a> , <a href="#">64083</a> , <a href="#">66629 (mouse)</a>
Reactivity	Human, Mouse
Predicted	Dog
Host	Goat
Clonality	Polyclonal
Concentration	0.5 mg/ml
Isotype	IgG
Calculated MW	33811

**GOLPH3 Antibody (internal region) - Additional Information****Gene ID** 64083**Other Names**

Golgi phosphoprotein 3, Coat protein GPP34, Mitochondrial DNA absence factor, MIDAS, GOLPH3, GPP34

**Dilution**

WB~~1:1000

E~~N/A

**Format**

0.5 mg/ml in Tris saline, 0.02% sodium azide, pH7.3 with 0.5% bovine serum albumin

**Storage**

Maintain refrigerated at 2-8°C for up to 6 months. For long term storage store at -20°C in small aliquots to prevent freeze-thaw cycles.

**Precautions**

GOLPH3 Antibody (internal region) is for research use only and not for use in diagnostic or therapeutic procedures.

**GOLPH3 Antibody (internal region) - Protein Information****Name** GOLPH3**Synonyms** GPP34**Function**

Phosphatidylinositol-4-phosphate-binding protein that links Golgi membranes to the cytoskeleton and may participate in the tensile force required for vesicle budding from the Golgi. Thereby, may play a role in Golgi membrane trafficking and could indirectly give its flattened shape to the Golgi apparatus. May also bind to the coatamer to regulate Golgi membrane trafficking. May play a role in anterograde transport from the Golgi to the plasma membrane and regulate secretion. Has also been involved in the control of the localization of Golgi enzymes through interaction with their cytoplasmic part. May play an indirect role in cell migration. Has also been involved in the modulation of mTOR signaling. May also be involved in the regulation of mitochondrial lipids biosynthesis.

#### **Cellular Location**

Golgi apparatus, Golgi stack membrane; Peripheral membrane protein; Cytoplasmic side. Golgi apparatus, trans-Golgi network membrane; Peripheral membrane protein; Cytoplasmic side Mitochondrion intermembrane space. Cell membrane Endosome. Note=Phosphatidylinositol 4-phosphate-binding and oligomerization participate in the recruitment onto Golgi membranes.

#### **Tissue Location**

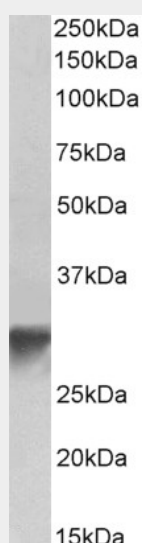
Detected in muscle fibers of patients with mitochondrial diseases; not detected in normal muscle fibers

### **GOLPH3 Antibody (internal region) - Protocols**

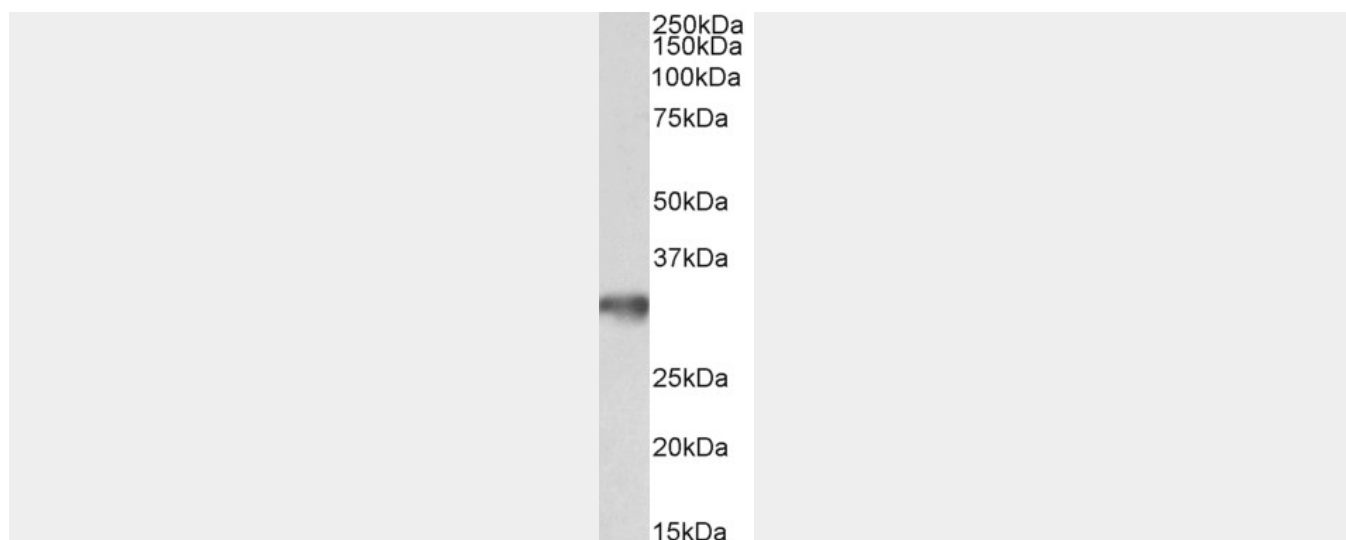
Provided below are standard protocols that you may find useful for product applications.

- [Western Blot](#)
- [Blocking Peptides](#)
- [Dot Blot](#)
- [Immunohistochemistry](#)
- [Immunofluorescence](#)
- [Immunoprecipitation](#)
- [Flow Cytometry](#)
- [Cell Culture](#)

### **GOLPH3 Antibody (internal region) - Images**



AF3087a (0.3 µg/ml) staining of Human Platelets lysate (35 µg protein in RIPA buffer). Primary incubation was 1 hour. Detected by chemiluminescence.



AF3087a (0.1 µg/ml) staining of Mouse brain lysate (35 µg protein in RIPA buffer). Primary incubation was 1 hour. Detected by chemiluminescence.

#### **GOLPH3 Antibody (internal region) - References**

GOLPH3 modulates mTOR signalling and rapamycin sensitivity in cancer. Scott KL, Kabbarah O, Liang MC, Ivanova E, Anagnostou V, Wu J, Dhakal S, Wu M, Chen S, Feinberg T, Huang J, Saci A, Widlund HR, Fisher DE, Xiao Y, Rimm DL, Protopopov A, Wong KK, Chin L, Nature 2009 Jun 459 (7250): 1085-90. PMID: 19553991