

CHCHD3 (aa151-164) Antibody (internal region)
Peptide-affinity purified goat antibody
Catalog # AF3115a**Specification**

CHCHD3 (aa151-164) Antibody (internal region) - Product Information

Application	WB, IHC, E
Primary Accession	O9NX63
Other Accession	NP_060282.1 , 54927 , 66075 (mouse) , 296966 (rat)
Reactivity	Human
Predicted	Mouse, Rat, Dog, Sheep
Host	Goat
Clonality	Polyclonal
Concentration	0.5 mg/ml
Isotype	IgG
Calculated MW	26152

CHCHD3 (aa151-164) Antibody (internal region) - Additional Information**Gene ID** 54927**Other Names**

MICOS complex subunit MIC19, Coiled-coil-helix-coiled-coil-helix domain-containing protein 3, CHCHD3, MIC19, MINOS3

DilutionWB~~1:1000
IHC~~1:100~500
E~~N/A**Format**

0.5 mg/ml in Tris saline, 0.02% sodium azide, pH7.3 with 0.5% bovine serum albumin

Storage

Maintain refrigerated at 2-8°C for up to 6 months. For long term storage store at -20°C in small aliquots to prevent freeze-thaw cycles.

Precautions

CHCHD3 (aa151-164) Antibody (internal region) is for research use only and not for use in diagnostic or therapeutic procedures.

CHCHD3 (aa151-164) Antibody (internal region) - Protein Information**Name** CHCHD3**Synonyms** MIC19, MINOS3

Function

Component of the MICOS complex, a large protein complex of the mitochondrial inner membrane that plays crucial roles in the maintenance of crista junctions, inner membrane architecture, and formation of contact sites to the outer membrane (PubMed:25781180, PubMed:32567732, PubMed:33130824). Plays an important role in the maintenance of the MICOS complex stability and the mitochondrial cristae morphology (PubMed:25781180, PubMed:32567732, PubMed:33130824). Has also been shown to function as a transcription factor which binds to the BAG1 promoter and represses BAG1 transcription (PubMed:22567091).

Cellular Location

Mitochondrion inner membrane {ECO:0000250|UniProtKB:Q9CRB9}; Lipid-anchor; Intermembrane side {ECO:0000250|UniProtKB:Q9CRB9}. Cytoplasm. Nucleus Mitochondrion

Tissue Location

Detected at low levels in brain, placenta, lung, liver, kidney and pancreas with increased levels in heart and skeletal muscle. Higher expression in primary lung cancers than in normal lung tissue.

CHCHD3 (aa151-164) Antibody (internal region) - Protocols

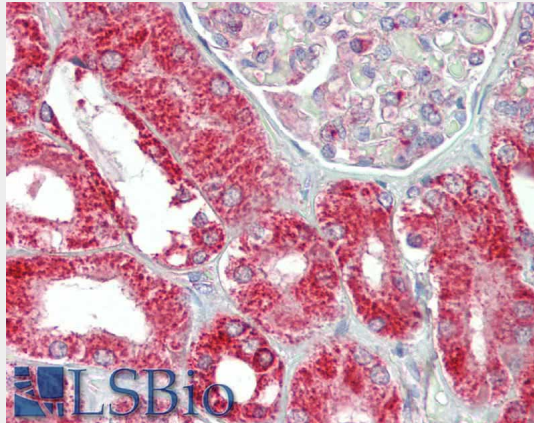
Provided below are standard protocols that you may find useful for product applications.

- [Western Blot](#)
- [Blocking Peptides](#)
- [Dot Blot](#)
- [Immunohistochemistry](#)
- [Immunofluorescence](#)
- [Immunoprecipitation](#)
- [Flow Cytometry](#)
- [Cell Culture](#)

CHCHD3 (aa151-164) Antibody (internal region) - Images



AF3115a (0.3 µg/ml) staining of Human Placenta lysate (35 µg protein in RIPA buffer). Primary incubation was 1 hour. Detected by chemiluminescence.



AF3115a (5 µg/ml) staining of paraffin embedded Human Kidney. Steamed antigen retrieval with citrate buffer pH 6, AP-staining.

CHCHD3 (aa151-164) Antibody (internal region) - References

The mitochondrial inner membrane protein mitofilin exists as a complex with SAM50, metaxins 1 and 2, coiled-coil-helix.

Coiled-coil-helix domain-containing protein 3 and 6 and DnaJC11 Xie,J., Marusich,M.F., Souda,P., Whitelegge,J. and Capaldi,R.A. FEBS Lett. 581 (18), 3545-3549 (2007) PMID: 17624330