

Stabilin 1 Antibody (C-Term)
Peptide-affinity purified goat antibody
Catalog # AF3130a

Specification

Stabilin 1 Antibody (C-Term) - Product Information

Application	IHC
Primary Accession	O9NY15
Other Accession	NP_055951.2 , 23166
Reactivity	Human
Predicted	Pig, Dog
Host	Goat
Clonality	Polyclonal
Concentration	0.5 mg/ml
Isotype	IgG
Calculated MW	275482

Stabilin 1 Antibody (C-Term) - Additional Information

Gene ID 23166

Other Names

Stabilin-1, Fasciclin, EGF-like, laminin-type EGF-like and link domain-containing scavenger receptor 1, FEEL-1, MS-1 antigen, STAB1, FEEL1, KIAA0246

Format

0.5 mg/ml in Tris saline, 0.02% sodium azide, pH7.3 with 0.5% bovine serum albumin

Storage

Maintain refrigerated at 2-8°C for up to 6 months. For long term storage store at -20°C in small aliquots to prevent freeze-thaw cycles.

Precautions

Stabilin 1 Antibody (C-Term) is for research use only and not for use in diagnostic or therapeutic procedures.

Stabilin 1 Antibody (C-Term) - Protein Information

Name STAB1

Synonyms FEEL1, KIAA0246

Function

Acts as a scavenger receptor for acetylated low density lipoprotein. Binds to both Gram-positive and Gram-negative bacteria and may play a role in defense against bacterial infection. When inhibited in endothelial tube formation assays, there is a marked decrease in cell-cell interactions, suggesting a role in angiogenesis. Involved in the delivery of newly synthesized CHID1/SI-CLP from

the biosynthetic compartment to the endosomal/lysosomal system.

Cellular Location

Membrane; Single-pass type I membrane protein

Tissue Location

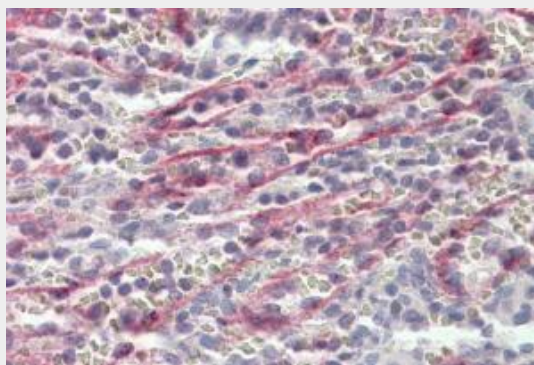
High levels found in spleen, lymph node, liver and placenta. Also expressed in endothelial cells

Stabilin 1 Antibody (C-Term) - Protocols

Provided below are standard protocols that you may find useful for product applications.

- [Western Blot](#)
- [Blocking Peptides](#)
- [Dot Blot](#)
- [Immunohistochemistry](#)
- [Immunofluorescence](#)
- [Immunoprecipitation](#)
- [Flow Cytometry](#)
- [Cell Culture](#)

Stabilin 1 Antibody (C-Term) - Images



AF3130a (3.8 μ g/ml) staining of paraffin embedded Human Spleen. Steamed antigen retrieval with citrate buffer pH 6, AP-staining.

Stabilin 1 Antibody (C-Term) - References

CLEVER-1 mediates lymphocyte transmigration through vascular and lymphatic endothelium. Salmi M, Koskinen K, Henttinen T, Elima K, Jalkanen S, Blood 2004 Dec 104 (13): 3849-57. PMID: 15297319