

Spondin 2 / Mindin Antibody (internal region)
Peptide-affinity purified goat antibody
Catalog # AF3178a**Specification**

Spondin 2 / Mindin Antibody (internal region) - Product Information

Application	WB, E
Primary Accession	Q9BUD6
Other Accession	NP_036577.1 , 10417
Reactivity	Human
Predicted	Mouse, Rat
Host	Goat
Clonality	Polyclonal
Concentration	0.5 mg/ml
Isotype	IgG
Calculated MW	35788

Spondin 2 / Mindin Antibody (internal region) - Additional Information**Gene ID** 10417**Other Names**

Spondin-2, Differentially expressed in cancerous and non-cancerous lung cells 1, DIL-1, Mindin, SPON2, DIL1

Dilution

WB~~1:1000

E~~N/A

Format

0.5 mg/ml in Tris saline, 0.02% sodium azide, pH7.3 with 0.5% bovine serum albumin

Storage

Maintain refrigerated at 2-8°C for up to 6 months. For long term storage store at -20°C in small aliquots to prevent freeze-thaw cycles.

Precautions

Spondin 2 / Mindin Antibody (internal region) is for research use only and not for use in diagnostic or therapeutic procedures.

Spondin 2 / Mindin Antibody (internal region) - Protein Information**Name** SPON2**Synonyms** DIL1**Function**

Cell adhesion protein that promotes adhesion and outgrowth of hippocampal embryonic neurons. Binds directly to bacteria and their components and functions as an opsonin for macrophage phagocytosis of bacteria. Essential in the initiation of the innate immune response and represents a unique pattern-recognition molecule in the ECM for microbial pathogens (By similarity). Binds bacterial lipopolysaccharide (LPS).

Cellular Location

Secreted, extracellular space, extracellular matrix

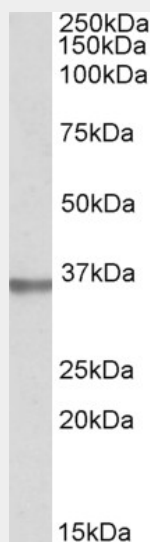
Tissue Location

Expressed in normal lung tissue but not in lung carcinoma cell lines.

Spondin 2 / Mindin Antibody (internal region) - Protocols

Provided below are standard protocols that you may find useful for product applications.

- [Western Blot](#)
- [Blocking Peptides](#)
- [Dot Blot](#)
- [Immunohistochemistry](#)
- [Immunofluorescence](#)
- [Immunoprecipitation](#)
- [Flow Cytometry](#)
- [Cell Culture](#)

Spondin 2 / Mindin Antibody (internal region) - Images

AF3178a (1 µg/ml) staining of Human Prostate lysate (35 µg protein in RIPA buffer). Primary incubation was 1 hour. Detected by chemiluminescence.

Spondin 2 / Mindin Antibody (internal region) - Background

Reported variants NP_036577.1 and NP_001121797.1 represent identical protein.

Spondin 2 / Mindin Antibody (internal region) - References

Identification of genes (SPON2 and C20orf2) differentially expressed between cancerous and

noncancerous lung cells by mRNA differential display. Manda R, Kohno T, Matsuno Y, Takenoshita S, Kuwano H, Yokota J, Genomics 1999 Oct 61 (1): 5-14. PMID: 10512675