

ANTXR2 / CMG2 Antibody (internal rejoin)
Peptide-affinity purified goat antibody
Catalog # AF3179a

Specification

ANTXR2 / CMG2 Antibody (internal rejoin) - Product Information

Application	WB, IHC
Primary Accession	P58335
Other Accession	NP_477520.2 , NP_001139266.1 , 118429
Reactivity	Human, Mouse, Rat
Predicted	Dog
Host	Goat
Clonality	Polyclonal
Concentration	0.5 mg/ml
Isotype	IgG
Calculated MW	53666

ANTXR2 / CMG2 Antibody (internal rejoin) - Additional Information

Gene ID 118429

Other Names

Anthrax toxin receptor 2, Capillary morphogenesis gene 2 protein, CMG-2, ANTXR2, CMG2

Format

0.5 mg/ml in Tris saline, 0.02% sodium azide, pH7.3 with 0.5% bovine serum albumin

Storage

Maintain refrigerated at 2-8°C for up to 6 months. For long term storage store at -20°C in small aliquots to prevent freeze-thaw cycles.

Precautions

ANTXR2 / CMG2 Antibody (internal rejoin) is for research use only and not for use in diagnostic or therapeutic procedures.

ANTXR2 / CMG2 Antibody (internal rejoin) - Protein Information

Name ANTXR2 ([HGNC:21732](#))

Function

Necessary for cellular interactions with laminin and the extracellular matrix.

Cellular Location

[Isoform 1]: Cell membrane; Single-pass type I membrane protein. Note=Expressed at the cell surface [Isoform 3]: Secreted.

Tissue Location

Expressed in prostate, thymus, ovary, testis, pancreas, colon, heart, kidney, lung, liver, peripheral blood leukocytes, placenta, skeletal muscle, small intestine and spleen

ANTXR2 / CMG2 Antibody (internal region) - Protocols

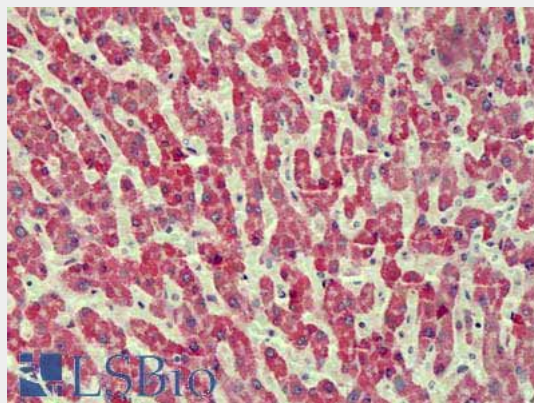
Provided below are standard protocols that you may find useful for product applications.

- [Western Blot](#)
- [Blocking Peptides](#)
- [Dot Blot](#)
- [Immunohistochemistry](#)
- [Immunofluorescence](#)
- [Immunoprecipitation](#)
- [Flow Cytometry](#)
- [Cell Culture](#)

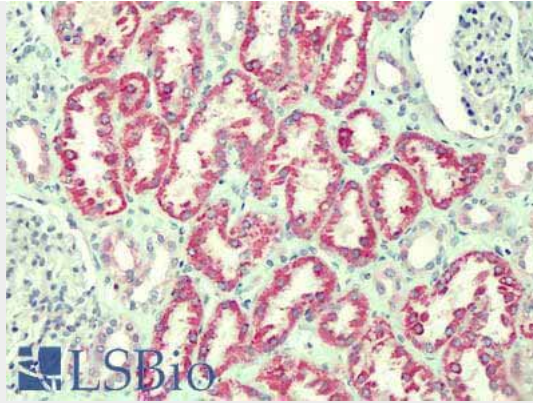
ANTXR2 / CMG2 Antibody (internal region) - Images



AF3179a (0.3 µg/ml) staining of Mouse Kidney lysate (35 µg protein in RIPA buffer). Primary incubation was 1 hour. Detected by chemiluminescence.



AF3179a (2.5 µg/ml) staining of paraffin embedded Human Liver. Steamed antigen retrieval with citrate buffer pH 6, AP-staining.



AF3179a (2.5 µg/ml) staining of paraffin embedded Human Kidney. Steamed antigen retrieval with citrate buffer pH 6, AP-staining.

ANTXR2 / CMG2 Antibody (internal region) - Background

This antibody is expected to recognize both reported isoforms (NP_477520.2; NP_001139266.1).

ANTXR2 / CMG2 Antibody (internal region) - References

Systemic hyalinosis mutations in the CMG2 ectodomain leading to loss of function through retention in the endoplasmic reticulum. Deuquet J, Abrami L, Difeo A, Ramirez MC, Martignetti JA, van der Goot FG, Human mutation 2009 Apr 30 (4): 583-9. PMID: 19191226