

**DAG1 Antibody (internal region)**  
Peptide-affinity purified goat antibody  
Catalog # AF3234a

**Specification**

---

**DAG1 Antibody (internal region) - Product Information**

Application	WB, E
Primary Accession	<a href="#">Q14118</a>
Other Accession	<a href="#">NP_004384.4</a> , <a href="#">1605</a>
Reactivity	Human, Mouse, Rat
Predicted	Dog
Host	Goat
Clonality	Polyclonal
Concentration	0.5 mg/ml
Isotype	IgG
Calculated MW	97441

**DAG1 Antibody (internal region) - Additional Information**

Gene ID 1605

**Other Names**

Dystroglycan, Dystrophin-associated glycoprotein 1, Alpha-dystroglycan, Alpha-DG, Beta-dystroglycan, Beta-DG, DAG1

**Dilution**

WB~~1:1000

E~~N/A

**Format**

0.5 mg/ml in Tris saline, 0.02% sodium azide, pH7.3 with 0.5% bovine serum albumin

**Storage**

Maintain refrigerated at 2-8°C for up to 6 months. For long term storage store at -20°C in small aliquots to prevent freeze-thaw cycles.

**Precautions**

DAG1 Antibody (internal region) is for research use only and not for use in diagnostic or therapeutic procedures.

**DAG1 Antibody (internal region) - Protein Information**

Name DAG1 ([HGNC:2666](#))

**Function**

The dystroglycan complex is involved in a number of processes including laminin and basement membrane assembly, sarcolemmal stability, cell survival, peripheral nerve myelination, nodal

structure, cell migration, and epithelial polarization. [Beta-dystroglycan]: Transmembrane protein that plays important roles in connecting the extracellular matrix to the cytoskeleton. Acts as a cell adhesion receptor in both muscle and non- muscle tissues. Receptor for both DMD and UTRN and, through these interactions, scaffolds axin to the cytoskeleton. Also functions in cell adhesion-mediated signaling and implicated in cell polarity.

#### Cellular Location

[Alpha-dystroglycan]: Secreted, extracellular space

#### Tissue Location

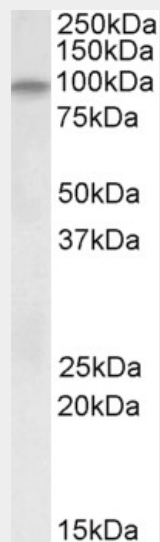
Expressed in a variety of fetal and adult tissues. In epidermal tissue, located to the basement membrane. Also expressed in keratinocytes and fibroblasts.

### DAG1 Antibody (internal region) - Protocols

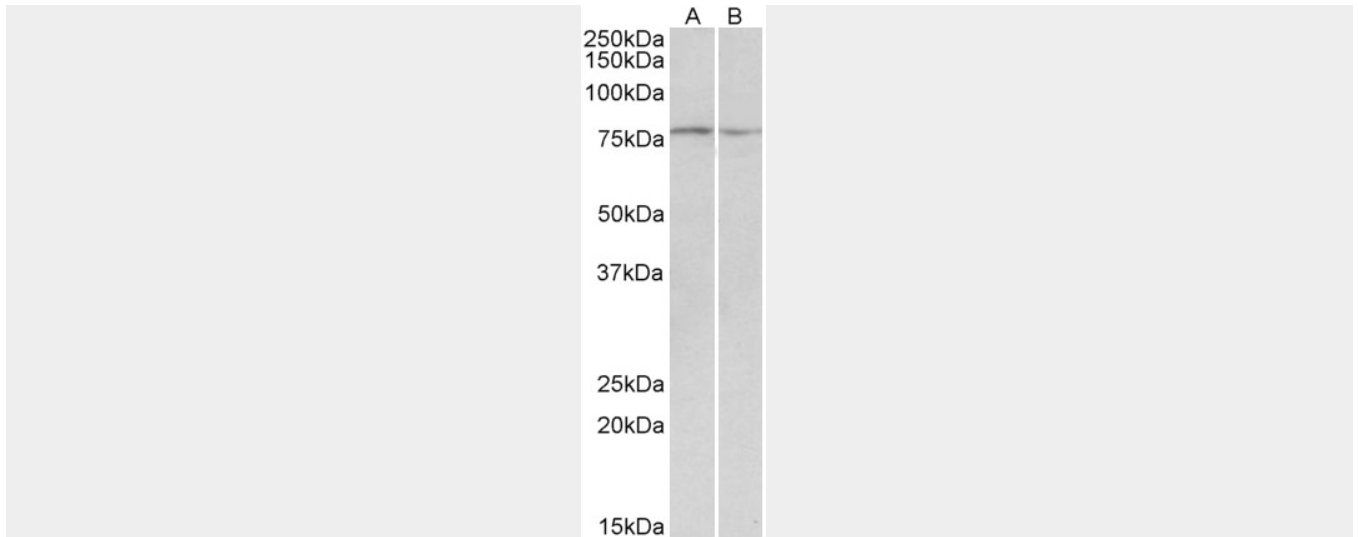
Provided below are standard protocols that you may find useful for product applications.

- [Western Blot](#)
- [Blocking Peptides](#)
- [Dot Blot](#)
- [Immunohistochemistry](#)
- [Immunofluorescence](#)
- [Immunoprecipitation](#)
- [Flow Cytometry](#)
- [Cell Culture](#)

### DAG1 Antibody (internal region) - Images



EB010102 (0.2 µg/ml) staining of Human Skeletal Muscle lysate (35 µg protein in RIPA buffer). Primary incubation was 1 hour. Detected by chemiluminescence.



EB010102 (0.1  $\mu\text{g/ml}$ ) staining of Mouse and Rat Skeletal Muscle lysate (35  $\mu\text{g}$  protein in RIPA buffer). Primary incubation was 1 hour. Detected by chemiluminescence.

#### **DAG1 Antibody (internal region) - Background**

This antibody is expected to recognize both the precursor and the mature alpha-dystroglycan, but not the mature beta-dystroglycan.

#### **DAG1 Antibody (internal region) - References**

Loss of alpha-dystroglycan laminin binding in epithelium-derived cancers is caused by silencing of LARGE. de Bernabé DB, Inamori K, Yoshida-Moriguchi T, Weydert CJ, Harper HA, Willer T, Henry MD, Campbell KP, The Journal of biological chemistry 2009 Apr 284 (17): 11279-84. PMID: 19244252