

SLC2A4 / GLUT4 Antibody (C-Term)
Peptide-affinity purified goat antibody
Catalog # AF3248a**Specification**

SLC2A4 / GLUT4 Antibody (C-Term) - Product Information

Application	WB, E
Primary Accession	P14672
Other Accession	NP_001033.1 , 6517 , 20528 (mouse) , 25139 (rat)
Reactivity	Mouse, Rat
Predicted	Human, Pig
Host	Goat
Clonality	Polyclonal
Concentration	0.5 mg/ml
Isotype	IgG
Calculated MW	54787

SLC2A4 / GLUT4 Antibody (C-Term) - Additional Information**Gene ID** 6517**Other Names**

Solute carrier family 2, facilitated glucose transporter member 4, Glucose transporter type 4, insulin-responsive, GLUT-4, SLC2A4, GLUT4

Dilution

WB~~1:1000

E~~N/A

Format

0.5 mg/ml in Tris saline, 0.02% sodium azide, pH7.3 with 0.5% bovine serum albumin

Storage

Maintain refrigerated at 2-8°C for up to 6 months. For long term storage store at -20°C in small aliquots to prevent freeze-thaw cycles.

Precautions

SLC2A4 / GLUT4 Antibody (C-Term) is for research use only and not for use in diagnostic or therapeutic procedures.

SLC2A4 / GLUT4 Antibody (C-Term) - Protein Information**Name** SLC2A4 ([HGNC:11009](#))**Function**

Insulin-regulated facilitative glucose transporter, which plays a key role in removal of glucose from

circulation. Response to insulin is regulated by its intracellular localization: in the absence of insulin, it is efficiently retained intracellularly within storage compartments in muscle and fat cells. Upon insulin stimulation, translocates from these compartments to the cell surface where it transports glucose from the extracellular milieu into the cell.

Cellular Location

Cell membrane {ECO:0000250|UniProtKB:P14142}; Multi-pass membrane protein {ECO:0000250|UniProtKB:P14142} Endomembrane system; Multi-pass membrane protein. Cytoplasm, perinuclear region {ECO:0000250|UniProtKB:P14142}. Note=Localizes primarily to the perinuclear region, undergoing continued recycling to the plasma membrane where it is rapidly reinternalized (PubMed:8300557). The dileucine internalization motif is critical for intracellular sequestration (PubMed:8300557). Insulin stimulation induces translocation to the cell membrane (By similarity) {ECO:0000250|UniProtKB:P14142, ECO:0000269|PubMed:8300557}

Tissue Location

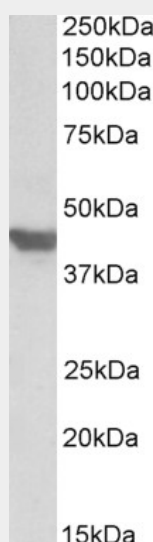
Skeletal and cardiac muscles; brown and white fat.

SLC2A4 / GLUT4 Antibody (C-Term) - Protocols

Provided below are standard protocols that you may find useful for product applications.

- [Western Blot](#)
- [Blocking Peptides](#)
- [Dot Blot](#)
- [Immunohistochemistry](#)
- [Immunofluorescence](#)
- [Immunoprecipitation](#)
- [Flow Cytometry](#)
- [Cell Culture](#)

SLC2A4 / GLUT4 Antibody (C-Term) - Images



AF3248a (1 µg/ml) staining of Mouse Heart lysate (35 µg protein in RIPA buffer). Primary incubation was 1 hour. Detected by chemiluminescence.

SLC2A4 / GLUT4 Antibody (C-Term) - References

PTEN identified as important risk factor of chronic obstructive pulmonary disease. Hosgood HD, Menashe I, He X, Chanock S, Lan Q, Respiratory medicine 2009 Dec 103 (12): 1866-70. PMID: 19625176