

**ETFB / FP585 (aa 152-165) Antibody (internal region)**  
Peptide-affinity purified goat antibody  
Catalog # AF3255a

### Specification

---

#### ETFB / FP585 (aa 152-165) Antibody (internal region) - Product Information

Application	WB, IHC
Primary Accession	<a href="#">P38117</a>
Other Accession	<a href="#">NP_001976.1</a> , <a href="#">NP_001014763.1</a> , <a href="#">2109</a> , <a href="#">110826 (mouse)</a> , <a href="#">292845 (rat)</a>
Reactivity	Human, Mouse, Rat
Predicted	Dog
Host	Goat
Clonality	Polyclonal
Concentration	0.5 mg/ml
Isotype	IgG
Calculated MW	27844

#### ETFB / FP585 (aa 152-165) Antibody (internal region) - Additional Information

Gene ID 2109

#### Other Names

Electron transfer flavoprotein subunit beta, Beta-ETF, ETFB

#### Format

0.5 mg/ml in Tris saline, 0.02% sodium azide, pH7.3 with 0.5% bovine serum albumin

#### Storage

Maintain refrigerated at 2-8°C for up to 6 months. For long term storage store at -20°C in small aliquots to prevent freeze-thaw cycles.

#### Precautions

ETFB / FP585 (aa 152-165) Antibody (internal region) is for research use only and not for use in diagnostic or therapeutic procedures.

#### ETFB / FP585 (aa 152-165) Antibody (internal region) - Protein Information

Name ETFB ([HGNC:3482](#))

#### Function

Heterodimeric electron transfer flavoprotein that accepts electrons from several mitochondrial dehydrogenases, including acyl-CoA dehydrogenases, glutaryl-CoA and sarcosine dehydrogenase (PubMed: [15159392](http://www.uniprot.org/citations/15159392), PubMed: [15975918](http://www.uniprot.org/citations/15975918), PubMed: [25416781](http://www.uniprot.org/citations/25416781)). It transfers the electrons to the main mitochondrial respiratory chain via ETF- ubiquinone

oxidoreductase (Probable). Required for normal mitochondrial fatty acid oxidation and normal amino acid metabolism (PubMed: [12815589](http://www.uniprot.org/citations/12815589), PubMed: [7912128](http://www.uniprot.org/citations/7912128)). ETFB binds an AMP molecule that probably has a purely structural role (PubMed: [15159392](http://www.uniprot.org/citations/15159392), PubMed: [15975918](http://www.uniprot.org/citations/15975918), PubMed: [8962055](http://www.uniprot.org/citations/8962055)).

#### Cellular Location

Mitochondrion matrix

#### Tissue Location

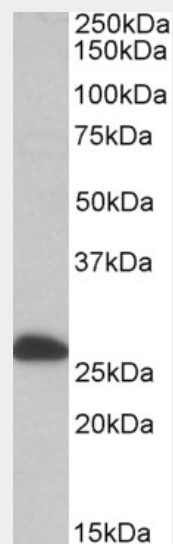
Abundant in liver, heart and skeletal muscle. A weak expression is seen in the brain, placenta, lung, kidney and pancreas.

### ETFb / FP585 (aa 152-165) Antibody (internal region) - Protocols

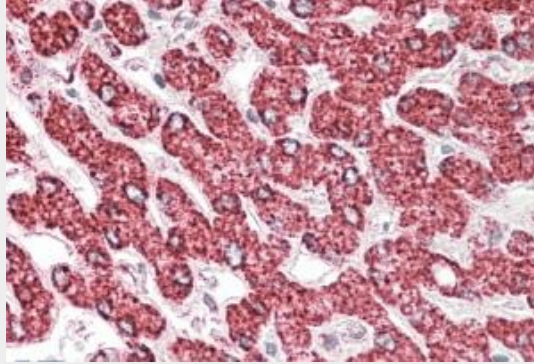
Provided below are standard protocols that you may find useful for product applications.

- [Western Blot](#)
- [Blocking Peptides](#)
- [Dot Blot](#)
- [Immunohistochemistry](#)
- [Immunofluorescence](#)
- [Immunoprecipitation](#)
- [Flow Cytometry](#)
- [Cell Culture](#)

### ETFb / FP585 (aa 152-165) Antibody (internal region) - Images



AF3255a (0.1 µg/ml) staining of Human Liver lysate (35 µg protein in RIPA buffer). Primary incubation was 1 hour. Detected by chemiluminescence.



AF3255a (3.8 µg/ml) staining of paraffin embedded Human Liver. Steamed antigen retrieval with citrate buffer pH 6, AP-staining.

#### **ETFB / FP585 (aa 152-165) Antibody (internal region) - Background**

This antibody is expected to recognize both reported isoforms (NP\_001976.1; NP\_001014763.1). Amino acid numbering in the name above refers to NP\_001976.1).

#### **ETFB / FP585 (aa 152-165) Antibody (internal region) - References**

Clinical and genetic analysis of lipid storage myopathies. Ohkuma A, Noguchi S, Sugie H, Malicdan MC, Fukuda T, Shimazu K, Lopez LC, Hirano M, Hayashi YK, Nonaka I, Nishino I, Muscle & nerve 2009 Mar 39 (3): 333-42. PMID: 19208393