

**ARHGDIA Antibody (internal region)**  
**Peptide-affinity purified goat antibody**  
**Catalog # AF3281a****Specification**

---

**ARHGDIA Antibody (internal region) - Product Information**

Application	WB, E
Primary Accession	<a href="#">P52565</a>
Other Accession	<a href="#">NP_004300.1</a> , <a href="#">396</a> , <a href="#">192662 (mouse)</a>
Reactivity	Mouse, Rat
Predicted	Human, Dog
Host	Goat
Clonality	Polyclonal
Concentration	0.5 mg/ml
Isotype	IgG
Calculated MW	23207

**ARHGDIA Antibody (internal region) - Additional Information****Gene ID** 396**Other Names**

Rho GDP-dissociation inhibitor 1, Rho GDI 1, Rho-GDI alpha, ARHGDIA, GDIA1

**Dilution**

WB~~1:1000

E~~N/A

**Format**

0.5 mg/ml in Tris saline, 0.02% sodium azide, pH7.3 with 0.5% bovine serum albumin

**Storage**

Maintain refrigerated at 2-8°C for up to 6 months. For long term storage store at -20°C in small aliquots to prevent freeze-thaw cycles.

**Precautions**

ARHGDIA Antibody (internal region) is for research use only and not for use in diagnostic or therapeutic procedures.

**ARHGDIA Antibody (internal region) - Protein Information****Name** ARHGDIA**Synonyms** GDIA1**Function**

Controls Rho proteins homeostasis. Regulates the GDP/GTP exchange reaction of the Rho proteins

by inhibiting the dissociation of GDP from them, and the subsequent binding of GTP to them. Retains Rho proteins such as CDC42, RAC1 and RHOA in an inactive cytosolic pool, regulating their stability and protecting them from degradation. Actively involved in the recycling and distribution of activated Rho GTPases in the cell, mediates extraction from membranes of both inactive and activated molecules due its exceptionally high affinity for prenylated forms. Through the modulation of Rho proteins, may play a role in cell motility regulation. In glioma cells, inhibits cell migration and invasion by mediating the signals of SEMA5A and PLXNB3 that lead to inactivation of RAC1.

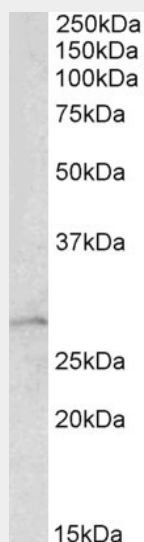
**Cellular Location**

Cytoplasm.

**ARHGDIA Antibody (internal region) - Protocols**

Provided below are standard protocols that you may find useful for product applications.

- [Western Blot](#)
- [Blocking Peptides](#)
- [Dot Blot](#)
- [Immunohistochemistry](#)
- [Immunofluorescence](#)
- [Immunoprecipitation](#)
- [Flow Cytometry](#)
- [Cell Culture](#)

**ARHGDIA Antibody (internal region) - Images**

AF3281a (1 µg/ml) staining of Mouse Lung lysate (35 µg protein in RIPA buffer). Primary incubation was 1 hour. Detected by chemiluminescence.

**ARHGDIA Antibody (internal region) - References**

Rho GDP dissociation inhibitor alpha expression correlates with the outcome of CMF treatment in invasive ductal breast cancer. Ronneburg H, Span PN, Kantelhardt E, Dittmer A, Schunke D, Holzhausen HJ, Sweep FC, Dittmer J, International journal of oncology 2010 Feb 36 (2): 379-86. PMID: 20043072