

CIRBP (aa 161-172) Antibody (C-Term)
Peptide-affinity purified goat antibody
Catalog # AF3287a**Specification**

CIRBP (aa 161-172) Antibody (C-Term) - Product Information

Application	WB, IHC, E
Primary Accession	Q14011
Other Accession	NP_001271.1 , 1153 , 12696 (mouse) , 81825 (rat)
Reactivity	Human, Mouse, Rat
Predicted	Dog
Host	Goat
Clonality	Polyclonal
Concentration	0.5 mg/ml
Isotype	IgG
Calculated MW	18648

CIRBP (aa 161-172) Antibody (C-Term) - Additional Information**Gene ID** 1153**Other Names**

Cold-inducible RNA-binding protein, A18 hnRNP, Glycine-rich RNA-binding protein CIRP, CIRBP, A18HNRNP, CIRP

DilutionWB~~1:1000
IHC~~1:100~500
E~~N/A**Format**

0.5 mg/ml in Tris saline, 0.02% sodium azide, pH7.3 with 0.5% bovine serum albumin

Storage

Maintain refrigerated at 2-8°C for up to 6 months. For long term storage store at -20°C in small aliquots to prevent freeze-thaw cycles.

Precautions

CIRBP (aa 161-172) Antibody (C-Term) is for research use only and not for use in diagnostic or therapeutic procedures.

CIRBP (aa 161-172) Antibody (C-Term) - Protein Information**Name** CIRBP**Synonyms** A18HNRNP, CIRP

Function

Cold-inducible mRNA binding protein that plays a protective role in the genotoxic stress response by stabilizing transcripts of genes involved in cell survival. Acts as a translational activator. Seems to play an essential role in cold-induced suppression of cell proliferation. Binds specifically to the 3'-untranslated regions (3'-UTRs) of stress-responsive transcripts RPA2 and TXN. Acts as a translational repressor (By similarity). Promotes assembly of stress granules (SGs), when overexpressed.

Cellular Location

Nucleus, nucleoplasm. Cytoplasm Note=Translocates from the nucleus to the cytoplasm after exposure to UV radiation. Translocates from the nucleus to the cytoplasm into stress granules upon various cytoplasmic stresses, such as osmotic and heat shocks. Its recruitment into stress granules occurs in the absence of TIAR proteins (By similarity).

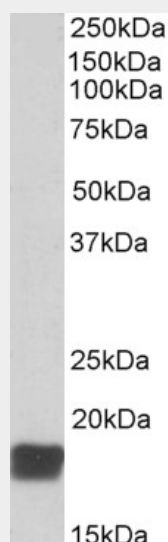
Tissue Location

Ubiquitous.

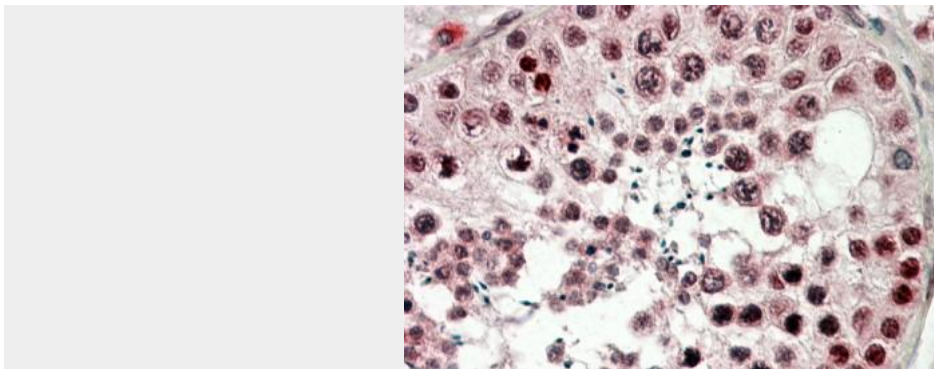
CIRBP (aa 161-172) Antibody (C-Term) - Protocols

Provided below are standard protocols that you may find useful for product applications.

- [Western Blot](#)
- [Blocking Peptides](#)
- [Dot Blot](#)
- [Immunohistochemistry](#)
- [Immunofluorescence](#)
- [Immunoprecipitation](#)
- [Flow Cytometry](#)
- [Cell Culture](#)

CIRBP (aa 161-172) Antibody (C-Term) - Images

AF3287a (0.01 µg/ml) staining of Mouse Testis lysate (35 µg protein in RIPA buffer). Primary incubation was 1 hour. Detected by chemiluminescence.



AF3287a (3.8 µg/ml) staining of paraffin embedded Human Testis. Steamed antigen retrieval with citrate buffer pH 6, AP-staining.

CIRBP (aa 161-172) Antibody (C-Term) - References

Down-regulating cold shock protein genes impairs cancer cell survival and enhances chemosensitivity. Zeng Y, Kulkarni P, Inoue T, Getzenberg RH, Journal of cellular biochemistry 2009 May 107 (1): 179-88. PMID: 19277990