

**MIG12 Antibody (internal region)**  
Peptide-affinity purified goat antibody  
Catalog # AF3309a

**Specification**

---

**MIG12 Antibody (internal region) - Product Information**

Application	WB, E
Primary Accession	<a href="#">O9NPA3</a>
Other Accession	<a href="#">NP_067065.1</a> , <a href="#">58526</a> , <a href="#">68041 (mouse)</a> , <a href="#">404280 (rat)</a>
Reactivity	Human
Predicted	Mouse, Rat, Dog
Host	Goat
Clonality	Polyclonal
Concentration	0.5 mg/ml
Isotype	IgG
Calculated MW	20202

**MIG12 Antibody (internal region) - Additional Information**

**Gene ID** 58526

**Other Names**

Mid1-interacting protein 1, Gastrulation-specific G12-like protein, Mid1-interacting G12-like protein, Protein STRAIT11499, Spot 14-related protein, S14R, Spot 14-R, MID1IP1, MIG12

**Dilution**

WB~~1:1000

E~~N/A

**Format**

0.5 mg/ml in Tris saline, 0.02% sodium azide, pH7.3 with 0.5% bovine serum albumin

**Storage**

Maintain refrigerated at 2-8°C for up to 6 months. For long term storage store at -20°C in small aliquots to prevent freeze-thaw cycles.

**Precautions**

MIG12 Antibody (internal region) is for research use only and not for use in diagnostic or therapeutic procedures.

**MIG12 Antibody (internal region) - Protein Information**

**Name** MID1IP1

**Synonyms** MIG12

### Function

Plays a role in the regulation of lipogenesis in liver. Up- regulates ACACA enzyme activity. Required for efficient lipid biosynthesis, including triacylglycerol, diacylglycerol and phospholipid. Involved in stabilization of microtubules (By similarity).

### Cellular Location

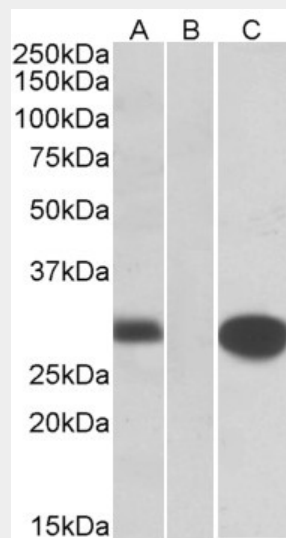
Nucleus {ECO:0000250|UniProtKB:Q9CQ20}. Cytoplasm {ECO:0000250|UniProtKB:Q9CQ20}. Cytoplasm, cytoskeleton {ECO:0000250|UniProtKB:Q9CQ20}. Note=Associated with microtubules {ECO:0000250|UniProtKB:Q9CQ20}

### MIG12 Antibody (internal region) - Protocols

Provided below are standard protocols that you may find useful for product applications.

- [Western Blot](#)
- [Blocking Peptides](#)
- [Dot Blot](#)
- [Immunohistochemistry](#)
- [Immunofluorescence](#)
- [Immunoprecipitation](#)
- [Flow Cytometry](#)
- [Cell Culture](#)

### MIG12 Antibody (internal region) - Images



HEK293 lysate (10ug protein in RIPA buffer) overexpressing Human MID1P1 with C-terminal MYC tag probed with AF3309a (1ug/ml) in Lane A and probed with anti-MYC Tag (1/1000) in lane C. Mock-transfected HEK293 probed with AF3309a (1mg/ml) in Lane B. Primary incubations were for 1 hour. Detected by chemiluminescence.

### MIG12 Antibody (internal region) - Background

Reported variants represent identical protein: NP\_001092261.1, NP\_067065.1, NP\_001092260.1

### MIG12 Antibody (internal region) - References

Mig12, a novel Opitz syndrome gene product partner, is expressed in the embryonic ventral

midline and co-operates with Mid1 to bundle and stabilize microtubules. Berti C, Fontanella B, Ferrentino R, Meroni G, BMC cell biology 2004 Feb 5 : 9. PMID: 15070402