

**NOLC1 Antibody (internal region)**  
**Peptide-affinity purified goat antibody**  
**Catalog # AF3329a****Specification**

---

**NOLC1 Antibody (internal region) - Product Information**

Application	IHC, E
Primary Accession	<a href="#">Q14978</a>
Other Accession	<a href="#">NP_004732.2</a> , <a href="#">9221</a> , <a href="#">70769 (mouse)</a> , <a href="#">64896 (rat)</a>
Reactivity	Human
Predicted	Mouse, Rat, Dog
Host	Goat
Clonality	Polyclonal
Concentration	0.5 mg/ml
Isotype	IgG
Calculated MW	73603

**NOLC1 Antibody (internal region) - Additional Information****Gene ID** 9221**Other Names**

Nucleolar and coiled-body phosphoprotein 1, 140 kDa nucleolar phosphoprotein, Nopp140, Hepatitis C virus NS5A-transactivated protein 13, HCV NS5A-transactivated protein 13, Nucleolar 130 kDa protein, Nucleolar phosphoprotein p130, NOLC1, KIAA0035, NS5ATP13

**Dilution**

IHC~~1:100~500

E~~N/A

**Format**

0.5 mg/ml in Tris saline, 0.02% sodium azide, pH7.3 with 0.5% bovine serum albumin

**Storage**

Maintain refrigerated at 2-8°C for up to 6 months. For long term storage store at -20°C in small aliquots to prevent freeze-thaw cycles.

**Precautions**

NOLC1 Antibody (internal region) is for research use only and not for use in diagnostic or therapeutic procedures.

**NOLC1 Antibody (internal region) - Protein Information****Name** NOLC1 ([HGNC:15608](#))**Function**

Nucleolar protein that acts as a regulator of RNA polymerase I by connecting RNA polymerase I with enzymes responsible for ribosomal processing and modification (PubMed:<a href="http://www.uniprot.org/citations/10567578" target="\_blank">10567578</a>, PubMed:<a href="http://www.uniprot.org/citations/26399832" target="\_blank">26399832</a>). Required for neural crest specification: following monoubiquitination by the BCR(KBTBD8) complex, associates with TCOF1 and acts as a platform to connect RNA polymerase I with enzymes responsible for ribosomal processing and modification, leading to remodel the translational program of differentiating cells in favor of neural crest specification (PubMed:<a href="http://www.uniprot.org/citations/26399832" target="\_blank">26399832</a>). Involved in nucleogenesis, possibly by playing a role in the maintenance of the fundamental structure of the fibrillar center and dense fibrillar component in the nucleolus (PubMed:<a href="http://www.uniprot.org/citations/9016786" target="\_blank">9016786</a>). It has intrinsic GTPase and ATPase activities (PubMed:<a href="http://www.uniprot.org/citations/9016786" target="\_blank">9016786</a>).

#### **Cellular Location**

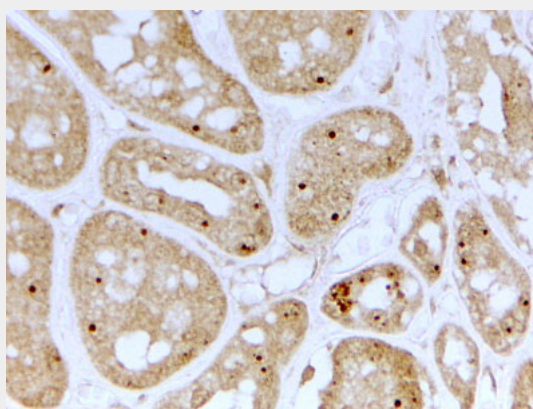
Nucleus, nucleolus. Cytoplasm. Note=Shuttles between the nucleolus and the cytoplasm. At telophase it begins to assemble into granular-like pre-nucleolar bodies which are subsequently relocated to nucleoli at the early G1-phase.

#### **NOLC1 Antibody (internal region) - Protocols**

Provided below are standard protocols that you may find useful for product applications.

- [Western Blot](#)
- [Blocking Peptides](#)
- [Dot Blot](#)
- [Immunohistochemistry](#)
- [Immunofluorescence](#)
- [Immunoprecipitation](#)
- [Flow Cytometry](#)
- [Cell Culture](#)

#### **NOLC1 Antibody (internal region) - Images**



AF3329a (2 µg/ml) staining of paraffin embedded Human Kidney. Steamed antigen retrieval with citrate buffer pH 6, HRP-staining.

#### **NOLC1 Antibody (internal region) - References**

Localization of Nopp140 within mammalian cells during interphase and mitosis. Thiry M, Cheutin T,

Lamaye F, Thelen N, Meier UT, O'Donohue MF, Ploton D, Histochemistry and cell biology 2009 Aug 132 (2): 129-40. PMID: 19381672