

COPS3 Antibody (internal region)
Peptide-affinity purified goat antibody
Catalog # AF3344a**Specification**

COPS3 Antibody (internal region) - Product Information

Application	WB, E
Primary Accession	Q9UNS2
Other Accession	NP_003644.2 , 8533 , 26572 (mouse) , 287367 (rat)
Reactivity	Human
Predicted	Mouse, Rat, Dog
Host	Goat
Clonality	Polyclonal
Concentration	0.5 mg/ml
Isotype	IgG
Calculated MW	47873

COPS3 Antibody (internal region) - Additional Information**Gene ID** 8533**Other Names**

COP9 signalosome complex subunit 3, SGN3, Signalosome subunit 3, JAB1-containing signalosome subunit 3, COPS3, CSN3

Dilution

WB~~1:1000

E~~N/A

Format

0.5 mg/ml in Tris saline, 0.02% sodium azide, pH7.3 with 0.5% bovine serum albumin

Storage

Maintain refrigerated at 2-8°C for up to 6 months. For long term storage store at -20°C in small aliquots to prevent freeze-thaw cycles.

Precautions

COPS3 Antibody (internal region) is for research use only and not for use in diagnostic or therapeutic procedures.

COPS3 Antibody (internal region) - Protein Information**Name** COPS3**Synonyms** CSN3

Function

Component of the COP9 signalosome complex (CSN), a complex involved in various cellular and developmental processes. The CSN complex is an essential regulator of the ubiquitin (Ubl) conjugation pathway by mediating the deneddylation of the cullin subunits of SCF- type E3 ligase complexes, leading to decrease the Ubl ligase activity of SCF-type complexes such as SCF, CSA or DDB2. The complex is also involved in phosphorylation of p53/TP53, c-jun/JUN, IkappaBalpha/NFKBIA, ITPK1 and IRF8/ICSBP, possibly via its association with CK2 and PKD kinases. CSN-dependent phosphorylation of TP53 and JUN promotes and protects degradation by the Ubl system, respectively.

Cellular Location

Cytoplasm. Nucleus

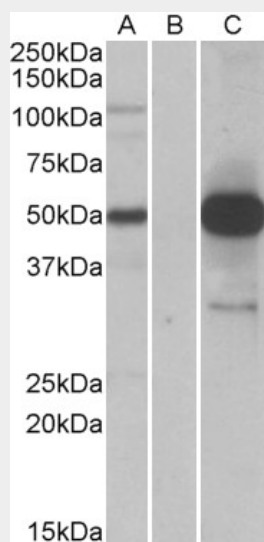
Tissue Location

Widely expressed. Expressed at high level in heart and skeletal muscle.

COPS3 Antibody (internal region) - Protocols

Provided below are standard protocols that you may find useful for product applications.

- [Western Blot](#)
- [Blocking Peptides](#)
- [Dot Blot](#)
- [Immunohistochemistry](#)
- [Immunofluorescence](#)
- [Immunoprecipitation](#)
- [Flow Cytometry](#)
- [Cell Culture](#)

COPS3 Antibody (internal region) - Images

HEK293 lysate (10ug protein in RIPA buffer) overexpressing Human COPS3 with DYKDDDDK tag probed with AF3344a (1.0ug/ml) in Lane A and probed with anti-DYKDDDDK Tag (1/5000) in lane C. Mock-transfected HEK293 probed with AF3344a (1mg/ml) in Lane B. Primary incubations were for 1 hour. Detected by chemiluminescence.

COPS3 Antibody (internal region) - References

ATM and ATR substrate analysis reveals extensive protein networks responsive to DNA damage.
Matsuoka S, Ballif BA, Smogorzewska A, McDonald ER, Hurov KE, Luo J, Bakalarski CE, Zhao Z, Solimini N, Lerenthal Y, Shiloh Y, Gygi SP, Elledge SJ, Science (New York, N.Y.) 2007 May 316 (5828): 1160-6. PMID: 17525332