

ALDH18A1 Antibody (C-Term)
Peptide-affinity purified goat antibody
Catalog # AF3358a**Specification**

ALDH18A1 Antibody (C-Term) - Product Information

Application	WB, E
Primary Accession	P54886
Other Accession	NP_002851.2 , NP_001017423.1 , 5832 , 56454 (mouse), 361755 (rat)
Reactivity	Human, Mouse
Predicted	Rat, Pig, Dog
Host	Goat
Clonality	Polyclonal
Concentration	0.5 mg/ml
Isotype	IgG
Calculated MW	87302

ALDH18A1 Antibody (C-Term) - Additional Information**Gene ID** 5832**Other Names**

Delta-1-pyrroline-5-carboxylate synthase, P5CS, Aldehyde dehydrogenase family 18 member A1, Glutamate 5-kinase, GK, 2.7.2.11, Gamma-glutamyl kinase, Gamma-glutamyl phosphate reductase, GPR, 1.2.1.41, Glutamate-5-semialdehyde dehydrogenase, Glutamyl-gamma-semialdehyde dehydrogenase, ALDH18A1, GSAS, P5CS, PYCS

Dilution

WB~~1:1000
E~~N/A

Format

0.5 mg/ml in Tris saline, 0.02% sodium azide, pH7.3 with 0.5% bovine serum albumin

Storage

Maintain refrigerated at 2-8°C for up to 6 months. For long term storage store at -20°C in small aliquots to prevent freeze-thaw cycles.

Precautions

ALDH18A1 Antibody (C-Term) is for research use only and not for use in diagnostic or therapeutic procedures.

ALDH18A1 Antibody (C-Term) - Protein Information**Name** ALDH18A1

Synonyms GSAS, P5CS, PYCS

Function

Bifunctional enzyme that converts glutamate to glutamate 5- semialdehyde, an intermediate in the biosynthesis of proline, ornithine and arginine.

Cellular Location

Mitochondrion. Mitochondrion matrix. Note=Exhibits puncta-like structures inside mitochondria under nutrient stress (PubMed:32770108). When cellular dependence on oxidative phosphorylation increases, forms filaments, which may increase its activity, and is sequestered in a subset of atypical mitochondria that lack cristae and ATP synthase (PubMed:39506109).

ALDH18A1 Antibody (C-Term) - Protocols

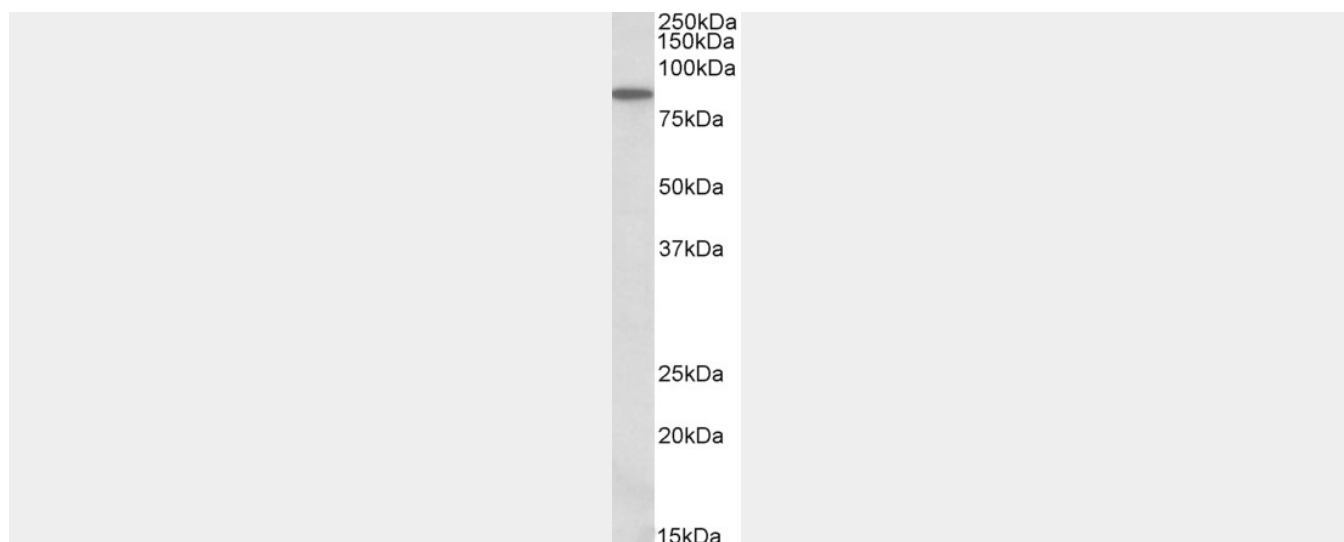
Provided below are standard protocols that you may find useful for product applications.

- [Western Blot](#)
- [Blocking Peptides](#)
- [Dot Blot](#)
- [Immunohistochemistry](#)
- [Immunofluorescence](#)
- [Immunoprecipitation](#)
- [Flow Cytometry](#)
- [Cell Culture](#)

ALDH18A1 Antibody (C-Term) - Images



AF3358a (1 µg/ml) staining of MCF7 lysate (35 µg protein in RIPA buffer). Primary incubation was 1 hour. Detected by chemiluminescence.



AF3358a (0.3 µg/ml) staining of NIH3T3 lysate (35 µg protein in RIPA buffer). Primary incubation was 1 hour. Detected by chemiluminescence.

ALDH18A1 Antibody (C-Term) - Background

This antibody is expected to recognize both reported isoforms (NP_002851.2; NP_001017423.1).

ALDH18A1 Antibody (C-Term) - References

Personalized smoking cessation: interactions between nicotine dose, dependence and quit success genotype score. Rose J, Behm FM, Drgon T, Johnson C, Uhl GR, Molecular medicine (Cambridge, Mass.) 2010 Mar : . PMID: 20379614