

KCTD11 Antibody (internal region)
Peptide-affinity purified goat antibody
Catalog # AF3376a**Specification**

KCTD11 Antibody (internal region) - Product Information

Application	WB, E
Primary Accession	Q693B1
Other Accession	NP_001002914.1 , 147040 , 216858 (mouse) , 363634 (rat)
Reactivity	Human
Predicted	Mouse, Rat, Dog
Host	Goat
Clonality	Polyclonal
Concentration	0.5 mg/ml
Isotype	IgG
Calculated MW	25887

KCTD11 Antibody (internal region) - Additional Information**Gene ID** 147040**Other Names**

BTB/POZ domain-containing protein KCTD11, KCTD11, C17orf36, REN

Dilution

WB~~1:1000

E~~N/A

Format

0.5 mg/ml in Tris saline, 0.02% sodium azide, pH7.3 with 0.5% bovine serum albumin

Storage

Maintain refrigerated at 2-8°C for up to 6 months. For long term storage store at -20°C in small aliquots to prevent freeze-thaw cycles.

Precautions

KCTD11 Antibody (internal region) is for research use only and not for use in diagnostic or therapeutic procedures.

KCTD11 Antibody (internal region) - Protein Information**Name** KCTD11**Synonyms** C17orf36, REN**Function**

Plays a role as a marker and a regulator of neuronal differentiation; Up-regulated by a variety of neurogenic signals, such as retinoic acid, epidermal growth factor/EGF and NGFB/nerve growth factor. Induces apoptosis, growth arrest and the expression of cyclin- dependent kinase inhibitor CDKN1B. Plays a role as a tumor repressor and inhibits cell growth and tumorigenicity of medulloblastoma (MDB). Acts as a probable substrate-specific adapter for a BCR (BTB-CUL3-RBX1) E3 ubiquitin-protein ligase complex towards HDAC1. Functions as antagonist of the Hedgehog pathway on cell proliferation and differentiation by affecting the nuclear transfer of transcription factor GLI1, thus maintaining cerebellar granule cells in undifferentiated state, this effect probably occurs via HDAC1 down- regulation, keeping GLI1 acetylated and inactive. When knock-down, Hedgehog antagonism is impaired and proliferation of granule cells is sustained. Activates the caspase cascade.

Tissue Location

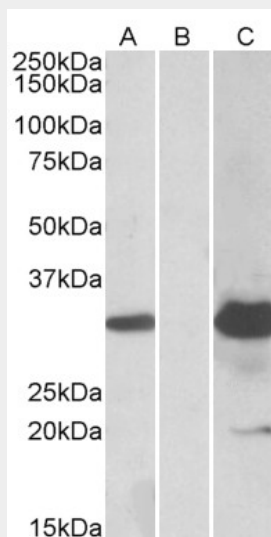
Higher expression in cerebellum than in whole brain and lower expression in medulloblastoma.

KCTD11 Antibody (internal region) - Protocols

Provided below are standard protocols that you may find useful for product applications.

- [Western Blot](#)
- [Blocking Peptides](#)
- [Dot Blot](#)
- [Immunohistochemistry](#)
- [Immunofluorescence](#)
- [Immunoprecipitation](#)
- [Flow Cytometry](#)
- [Cell Culture](#)

KCTD11 Antibody (internal region) - Images



HEK293 lysate (10ug protein in RIPA buffer) overexpressing Human KCTD11 with DYKDDDDK tag probed with AF3376a (1.0ug/ml) in Lane A and probed with anti-DYKDDDDK Tag (1/5000) in lane C. Mock-transfected HEK293 probed with AF3376a (1mg/ml) in Lane B. Primary incubations were for 1 hour. Detected by chemiluminescence.

KCTD11 Antibody (internal region) - References

REN(KCTD11) is a suppressor of Hedgehog signaling and is deleted in human medulloblastoma. Di Marcotullio L, Ferretti E, De Smaele E, Argenti B, Mincione C, Zazzeroni F, Gallo R, Masuelli L, Napolitano M, Maroder M, Modesti A, Giangaspero F, Screpanti I, Alesse E, Gulino A, Proceedings of the National Academy of Sciences of the United States of America 2004 Jul 101 (29): 10833-8. PMID: 15249678