

KCNIP3 Antibody (N-Term)
Peptide-affinity purified goat antibody
Catalog # AF3395a**Specification**

KCNIP3 Antibody (N-Term) - Product Information

Application	WB, E
Primary Accession	O9Y2W7
Other Accession	NP_038462.1 , 30818
Reactivity	Human
Predicted	Dog
Host	Goat
Clonality	Polyclonal
Concentration	0.5 mg/ml
Isotype	IgG
Calculated MW	29231

KCNIP3 Antibody (N-Term) - Additional Information**Gene ID** 30818**Other Names**

Calsenilin, A-type potassium channel modulatory protein 3, DRE-antagonist modulator, DREAM, Kv channel-interacting protein 3, KCHIP3, KCNIP3, CSEN, DREAM, KCHIP3

Dilution

WB~~1:1000

E~~N/A

Format

0.5 mg/ml in Tris saline, 0.02% sodium azide, pH7.3 with 0.5% bovine serum albumin

Storage

Maintain refrigerated at 2-8°C for up to 6 months. For long term storage store at -20°C in small aliquots to prevent freeze-thaw cycles.

Precautions

KCNIP3 Antibody (N-Term) is for research use only and not for use in diagnostic or therapeutic procedures.

KCNIP3 Antibody (N-Term) - Protein Information**Name** KCNIP3**Synonyms** CSEN, DREAM, KCHIP3**Function**

Calcium-dependent transcriptional repressor that binds to the DRE element of genes including PDYN and FOS. Affinity for DNA is reduced upon binding to calcium and enhanced by binding to magnesium. Seems to be involved in nociception (By similarity).

Cellular Location

Cytoplasm. Cell membrane; Lipid-anchor. Endoplasmic reticulum. Golgi apparatus. Nucleus.

Note=Also membrane-bound, associated with the plasma membrane (PubMed:15485870). In the presence of PSEN2 associated with the endoplasmic reticulum and Golgi. The sumoylated form is present only in the nucleus.

Tissue Location

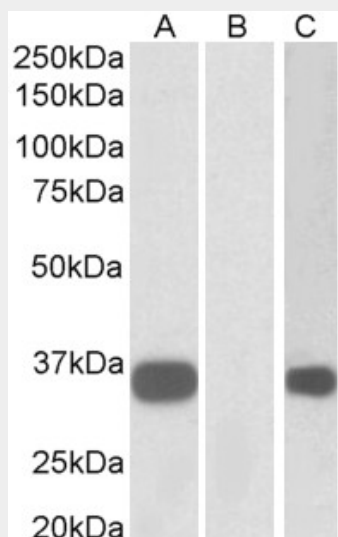
Highly expressed in brain. Widely expressed at lower levels. Expression levels are elevated in brain cortex regions affected by Alzheimer disease.

KCNIP3 Antibody (N-Term) - Protocols

Provided below are standard protocols that you may find useful for product applications.

- [Western Blot](#)
- [Blocking Peptides](#)
- [Dot Blot](#)
- [Immunohistochemistry](#)
- [Immunofluorescence](#)
- [Immunoprecipitation](#)
- [Flow Cytometry](#)
- [Cell Culture](#)

KCNIP3 Antibody (N-Term) - Images



HEK293 lysate (10ug protein in RIPA buffer) overexpressing Human KCNIP3 with C-terminal MYC tag probed with AF3395a (1ug/ml) in Lane A and probed with anti-MYC Tag (1/1000) in lane C. Mock-transfected HEK293 probed with AF3395a (1mg/ml) in Lane B. Primary incubations were for 1 hour. Detected by chemiluminescence.

KCNIP3 Antibody (N-Term) - Background

This antibody is expected to recognize isoform 1 (NP_038462.1) only.

KCNIP3 Antibody (N-Term) - References

The DREAM protein is associated with thyroid enlargement and nodular development. Rivas M, Mellström B, Torres B, Cali G, Ferrara AM, Terracciano D, Zannini M, Morreale de Escobar G, Naranjo JR. Molecular endocrinology (Baltimore, Md.) 2009 Jun 23 (6): 862-70. PMID: 19299442