

**OPRK1 Antibody (C-Term)**  
**Peptide-affinity purified goat antibody**  
**Catalog # AF3413a****Specification**

---

**OPRK1 Antibody (C-Term) - Product Information**

Application	WB, E
Primary Accession	<a href="#">P41145</a>
Other Accession	<a href="#">NP_000903.2</a> , <a href="#">4986</a> , <a href="#">18387 (mouse)</a> , <a href="#">29335 (rat)</a>
Reactivity	Human
Predicted	Mouse, Rat
Host	Goat
Clonality	Polyclonal
Concentration	0.5 mg/ml
Isotype	IgG
Calculated MW	42645

**OPRK1 Antibody (C-Term) - Additional Information****Gene ID** 4986**Other Names**

Kappa-type opioid receptor, K-OR-1, KOR-1, OPRK1, OPRK

**Dilution**

WB~~1:1000

E~~N/A

**Format**

0.5 mg/ml in Tris saline, 0.02% sodium azide, pH7.3 with 0.5% bovine serum albumin

**Storage**

Maintain refrigerated at 2-8°C for up to 6 months. For long term storage store at -20°C in small aliquots to prevent freeze-thaw cycles.

**Precautions**

OPRK1 Antibody (C-Term) is for research use only and not for use in diagnostic or therapeutic procedures.

**OPRK1 Antibody (C-Term) - Protein Information****Name** OPRK1**Synonyms** OPRK**Function**

G-protein coupled opioid receptor that functions as a receptor for endogenous alpha-neoendorphins and dynorphins, but has low affinity for beta-endorphins. Also functions as a receptor for various synthetic opioids and for the psychoactive diterpene salvinorin A. Ligand binding causes a conformation change that triggers signaling via guanine nucleotide-binding proteins (G proteins) and modulates the activity of down-stream effectors, such as adenylate cyclase. Signaling leads to the inhibition of adenylate cyclase activity. Inhibits neurotransmitter release by reducing calcium ion currents and increasing potassium ion conductance. Plays a role in the perception of pain. Plays a role in mediating reduced physical activity upon treatment with synthetic opioids. Plays a role in the regulation of salivation in response to synthetic opioids. May play a role in arousal and regulation of autonomic and neuroendocrine functions.

**Cellular Location**

Cell membrane; Multi-pass membrane protein

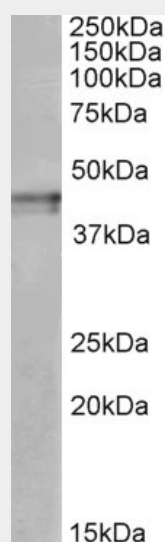
**Tissue Location**

Detected in brain and placenta.

**OPRK1 Antibody (C-Term) - Protocols**

Provided below are standard protocols that you may find useful for product applications.

- [Western Blot](#)
- [Blocking Peptides](#)
- [Dot Blot](#)
- [Immunohistochemistry](#)
- [Immunofluorescence](#)
- [Immunoprecipitation](#)
- [Flow Cytometry](#)
- [Cell Culture](#)

**OPRK1 Antibody (C-Term) - Images**

AF3413a (1 µg/ml) staining of Human Cerebral Cortex lysate (35 µg protein in RIPA buffer). Primary incubation was 1 hour. Detected by chemiluminescence.

**OPRK1 Antibody (C-Term) - References**

N-Glycosylation of the human kappa opioid receptor enhances its stability but slows its trafficking along the biosynthesis pathway. Li JG, Chen C, Liu-Chen LY. Biochemistry. 2007 Sep 25;46(38):10960-70. Epub 2007 Aug 21. PMID: 17711303