

POLDIP2 Antibody (internal region, near C-Term)
Peptide-affinity purified goat antibody
Catalog # AF3418a**Specification**

POLDIP2 Antibody (internal region, near C-Term) - Product Information

Application	WB, E
Primary Accession	O9Y2S7
Other Accession	NP_056399.1 , 26073 , 67811 (mouse)
Reactivity	Rat
Predicted	Human, Mouse, Dog
Host	Goat
Clonality	Polyclonal
Concentration	0.5 mg/ml
Isotype	IgG
Calculated MW	42033

POLDIP2 Antibody (internal region, near C-Term) - Additional Information**Gene ID** 26073**Other Names**

Polymerase delta-interacting protein 2, 38 kDa DNA polymerase delta interaction protein, p38, POLDIP2, PDIP38, POLD4

Dilution

WB~~1:1000

E~~N/A

Format

0.5 mg/ml in Tris saline, 0.02% sodium azide, pH7.3 with 0.5% bovine serum albumin

Storage

Maintain refrigerated at 2-8°C for up to 6 months. For long term storage store at -20°C in small aliquots to prevent freeze-thaw cycles.

Precautions

POLDIP2 Antibody (internal region, near C-Term) is for research use only and not for use in diagnostic or therapeutic procedures.

POLDIP2 Antibody (internal region, near C-Term) - Protein Information**Name** POLDIP2 {ECO:0000303|PubMed:26984527, ECO:0000312|HGNC:HGNC:23781}**Function**

Involved in DNA damage tolerance by regulating translesion synthesis (TLS) of templates carrying DNA damage lesions such as 8oxoG and abasic sites (PubMed:24191025). May act by stimulating activity of DNA polymerases involved in TLS, such as PRIMPOL and polymerase delta (POLD1) (PubMed:24191025, PubMed:26984527).

Cellular Location

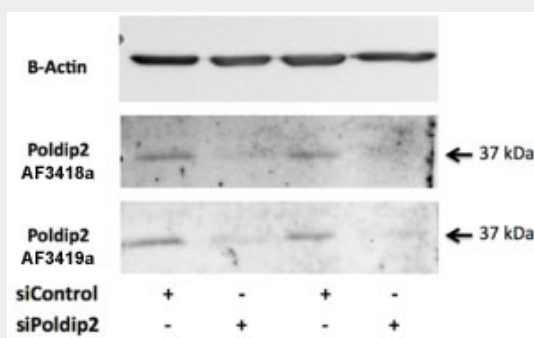
Mitochondrion matrix. Nucleus Note=Mainly localizes to the mitochondrial matrix; a small fraction localizes in the nucleus.

POLDIP2 Antibody (internal region, near C-Term) - Protocols

Provided below are standard protocols that you may find useful for product applications.

- [Western Blot](#)
- [Blocking Peptides](#)
- [Dot Blot](#)
- [Immunohistochemistry](#)
- [Immunofluorescence](#)
- [Immunoprecipitation](#)
- [Flow Cytometry](#)
- [Cell Culture](#)

POLDIP2 Antibody (internal region, near C-Term) - Images



AF3418a (0.5 µg/ml) staining of Rat VSMC lysate (35 µg protein in RIPA buffer). Primary incubation was overnight at 4C. Detected by chemiluminescence. Data provided by Everest Grant winner Dr. B. Lassegue, Emory University, Atlanta, USA

POLDIP2 Antibody (internal region, near C-Term) - References

Complex sense-antisense architecture of TNFAIP1/POLDIP2 on 17q11.2 represents a novel transcriptional structural-functional gene module involved in breast cancer progression. Grinchuk OV, Motakis E, Kuznetsov VA, BMC genomics 2010 11 Suppl 1 : S9. PMID: 20158880