

Doublecortin / DCX (aa232-242) Antibody (internal region)
Peptide-affinity purified goat antibody
Catalog # AF3487a**Specification**

Doublecortin / DCX (aa232-242) Antibody (internal region) - Product Information

Application	WB, IHC, IF, Pep-ELISA
Primary Accession	O43602
Other Accession	NP_000546.2 , NP_835365.1 , NP_835364.1 , NP_001182482.1 , 1641 , 13193 (mouse) , 84394 (rat)
Reactivity	Mouse
Predicted	Human, Rat, Pig, Dog
Host	Goat
Clonality	Polyclonal
Concentration	0.5 mg/ml
Isotype	IgG
Calculated MW	40574

Doublecortin / DCX (aa232-242) Antibody (internal region) - Additional Information**Gene ID** 1641**Other Names**

Neuronal migration protein doublecortin, Dublin, Lissencephalin-X, Lis-X, DCX, DBCN, LISX

DilutionWB~~1:1000
IHC~~1:100~500
IF~~1:50~200
Pep-ELISA~~N/A**Format**

0.5 mg/ml in Tris saline, 0.02% sodium azide, pH7.3 with 0.5% bovine serum albumin

Storage

Maintain refrigerated at 2-8°C for up to 6 months. For long term storage store at -20°C in small aliquots to prevent freeze-thaw cycles.

Precautions

Doublecortin / DCX (aa232-242) Antibody (internal region) is for research use only and not for use in diagnostic or therapeutic procedures.

Doublecortin / DCX (aa232-242) Antibody (internal region) - Protein Information**Name** DCX

Synonyms DBCN, LISX

Function

Microtubule-associated protein required for initial steps of neuronal dispersion and cortex lamination during cerebral cortex development. May act by competing with the putative neuronal protein kinase DCLK1 in binding to a target protein. May in that way participate in a signaling pathway that is crucial for neuronal interaction before and during migration, possibly as part of a calcium ion-dependent signal transduction pathway. May be part with PAFAH1B1/LIS-1 of overlapping, but distinct, signaling pathways that promote neuronal migration.

Cellular Location

Cytoplasm. Cell projection, neuron projection {ECO:0000250|UniProtKB:Q9ESI7}. Note=Localizes at neurite tips. {ECO:0000250|UniProtKB:Q9ESI7}

Tissue Location

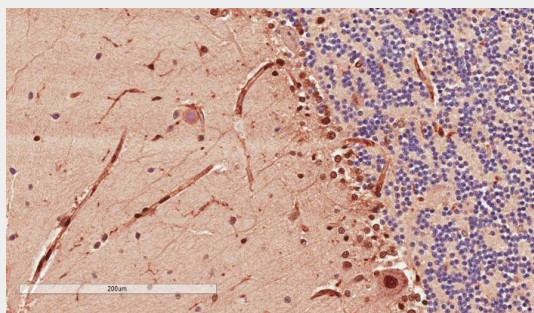
Highly expressed in neuronal cells of fetal brain (in the majority of cells of the cortical plate, intermediate zone and ventricular zone), but not expressed in other fetal tissues. In the adult, highly expressed in the brain frontal lobe, but very low expression in other regions of brain, and not detected in heart, placenta, lung, liver, skeletal muscles, kidney and pancreas

Doublecortin / DCX (aa232-242) Antibody (internal region) - Protocols

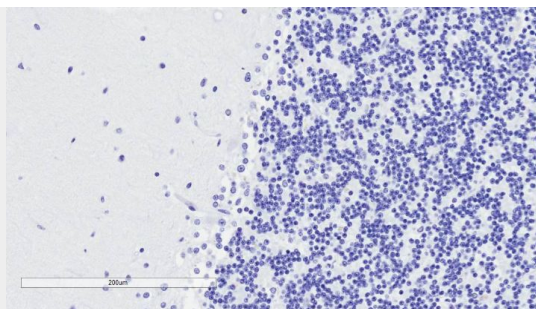
Provided below are standard protocols that you may find useful for product applications.

- [Western Blot](#)
- [Blocking Peptides](#)
- [Dot Blot](#)
- [Immunohistochemistry](#)
- [Immunofluorescence](#)
- [Immunoprecipitation](#)
- [Flow Cytometry](#)
- [Cell Culture](#)

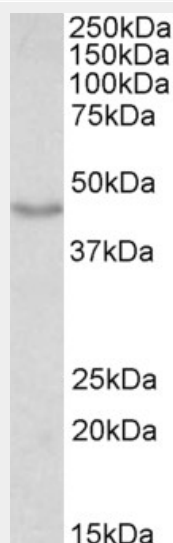
Doublecortin / DCX (aa232-242) Antibody (internal region) - Images



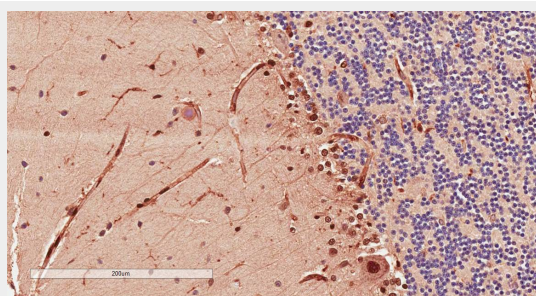
AF3487a (2µg/ml) staining of paraffin embedded Human Cerebellum. Microwaved antigen retrieval with citrate buffer pH 6, HRP-staining.



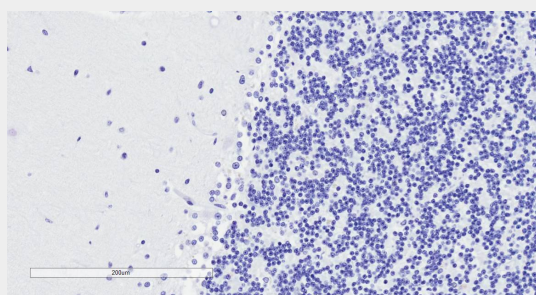
AF3487a Negative Control showing staining of paraffin embedded Human Cerebellum, with no primary antibody.



EB10781 (0.01µg/ml) staining of Mouse fetal Brain lysate (35µg protein in RIPA buffer). Detected by chemiluminescence.

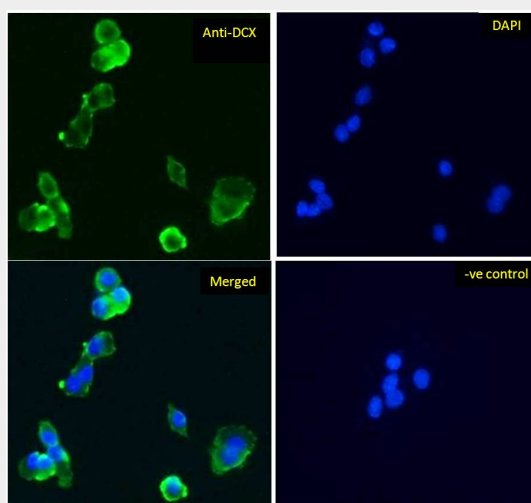


EB10781 (2µg/ml) staining of paraffin embedded Human Cerebellum. Microwaved antigen retrieval with citrate buffer pH 6, HRP-staining.

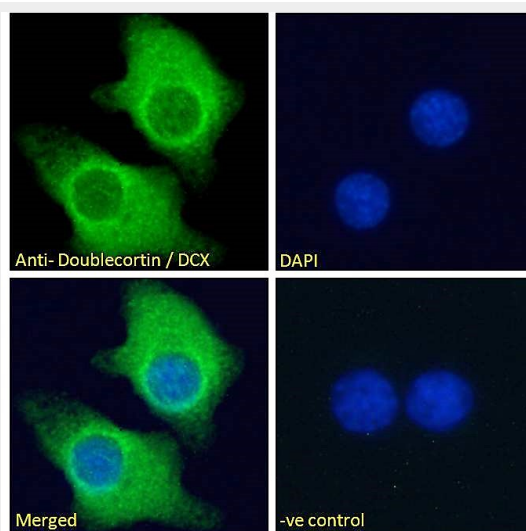


EB10781 Negative Control showing staining of paraffin embedded Human Cerebellum, with no

primary antibody.



EB10781 Immunofluorescence analysis of paraformaldehyde fixed HepG2 cells, permeabilized with 0.15% Triton. Primary incubation 1hr (5ug/ml) followed by Alexa Fluor 488 secondary antibody (1ug/ml), showing cytoplasmic staining. The nuclear stain is DAPI (b



EB10781 Immunofluorescence analysis of paraformaldehyde fixed KNRK cells, permeabilized with 0.15% Triton. Primary incubation 1hr (10ug/ml) followed by Alexa Fluor 488 secondary antibody (2ug/ml), showing cytoplasmic staining. The nuclear stain is DAPI (b

Doublecortin / DCX (aa232-242) Antibody (internal region) - Background

This antibody is expected to recognize all four reported isoforms (NP_000546.2; NP_835365.1; NP_835364.1; NP_001182482.1). Reported variants represent identical protein: NP_835364.1 and NP_835366.1.

Doublecortin / DCX (aa232-242) Antibody (internal region) - References

MiR-128 up-regulation inhibits Reelin and DCX expression and reduces neuroblastoma cell motility and invasiveness. Evangelisti C, Florian MC, Massimi I, Dominici C, Giannini G, Galardi S, BuÃ" MC, Massalini S, McDowell HP, Messi E, Gulino A, Farace MG, CiafrÃ" SA, The FASEB journal : official publication of the Federation of American Societies for Experimental Biology 2009 Dec 23 (12): 4276-87. PMID: 19713529