

NDRG2 Antibody (N-Term, near)
Peptide-affinity purified goat antibody
Catalog # AF3492a**Specification**

NDRG2 Antibody (N-Term, near) - Product Information

Application	WB, E
Primary Accession	Q9UN36
Other Accession	NP_963293.1 , 57447 , 29811 (mouse) , 171114 (rat)
Reactivity	Human, Mouse, Rat
Predicted	Dog
Host	Goat
Clonality	Polyclonal
Concentration	0.5 mg/ml
Isotype	IgG
Calculated MW	40798

NDRG2 Antibody (N-Term, near) - Additional Information**Gene ID** 57447**Other Names**

Protein NDRG2, N-myc downstream-regulated gene 2 protein, Protein Syld709613, NDRG2, KIAA1248, SYLD

Dilution

WB~~1:1000

E~~N/A

Format

0.5 mg/ml in Tris saline, 0.02% sodium azide, pH7.3 with 0.5% bovine serum albumin

Storage

Maintain refrigerated at 2-8°C for up to 6 months. For long term storage store at -20°C in small aliquots to prevent freeze-thaw cycles.

Precautions

NDRG2 Antibody (N-Term, near) is for research use only and not for use in diagnostic or therapeutic procedures.

NDRG2 Antibody (N-Term, near) - Protein Information**Name** NDRG2**Synonyms** KIAA1248, SYLD

Function

Contributes to the regulation of the Wnt signaling pathway. Down-regulates CTNNB1-mediated transcriptional activation of target genes, such as CCND1, and may thereby act as tumor suppressor. May be involved in dendritic cell and neuron differentiation.

Cellular Location

Cytoplasm. Cytoplasm, perinuclear region. Cell projection, growth cone. Note=In neurons, seems to concentrate at axonal growth cone. Perinuclear in neurons (By similarity).

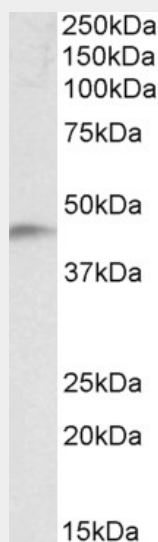
Tissue Location

Highly expressed in brain, heart, skeletal muscle and salivary gland, and moderately in kidney and liver. Expressed in dendritic cells, but not in other blood cells. Expression levels are low in pancreatic and liver cancer tissues; absent in meningioma Expressed in low-grade gliomas but present at low levels in glioblastoma. Isoform 1 and isoform 2 are present in brain neurons and up-regulated in Alzheimer disease (at protein level)

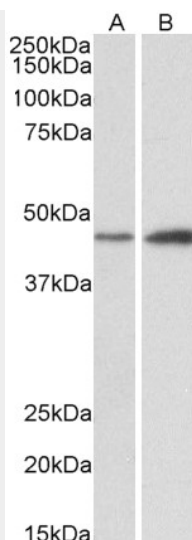
NDRG2 Antibody (N-Term, near) - Protocols

Provided below are standard protocols that you may find useful for product applications.

- [Western Blot](#)
- [Blocking Peptides](#)
- [Dot Blot](#)
- [Immunohistochemistry](#)
- [Immunofluorescence](#)
- [Immunoprecipitation](#)
- [Flow Cytometry](#)
- [Cell Culture](#)

NDRG2 Antibody (N-Term, near) - Images

AF3492a (0.1 µg/ml) staining of Human Temporal Cortex lysate (35 µg protein in RIPA buffer). Primary incubation was 1 hour. Detected by chemiluminescence.



AF3492a (0.3µg/ml) staining of Mouse (A) and Rat (B) Brain lysates (35µg protein in RIPA buffer). Primary incubation was 1 hour. Detected by chemiluminescence.

NDRG2 Antibody (N-Term, near) - Background

This antibody is expected to recognize reported isoform a (NP_963293.1) only. Reported variants represent identical protein: NP_963831.1, NP_963293.1, NP_963834.1, NP_963833.1.

NDRG2 Antibody (N-Term, near) - References

Expression of NDRG2 in esophageal squamous cell carcinoma. Shi H, Li N, Li S, Chen C, Wang W, Xu C, Zhang J, Jin H, Zhang H, Zhao H, Song W, Feng Q, Feng X, Shen X, Yao L, Zhao Q, Cancer science 2010 May 101 (5): 1292-9. PMID: 20331630