

**ZIC2 Antibody (C-Term)**  
**Peptide-affinity purified goat antibody**  
**Catalog # AF3499a****Specification**

---

**ZIC2 Antibody (C-Term) - Product Information**

Application	<b>WB</b>
Primary Accession	<a href="#">O95409</a>
Other Accession	<a href="#">NP_009060.2</a> , <a href="#">7546</a> , <a href="#">22772 (mouse)</a> , <a href="#">361096 (rat)</a>
Reactivity	<b>Human</b>
Predicted	<b>Mouse, Rat, Dog, Cow</b>
Host	<b>Goat</b>
Clonality	<b>Polyclonal</b>
Concentration	<b>0.5 mg/ml</b>
Isotype	<b>IgG</b>
Calculated MW	<b>55006</b>

**ZIC2 Antibody (C-Term) - Additional Information****Gene ID** 7546**Other Names**

Zinc finger protein ZIC 2, Zinc finger protein of the cerebellum 2, ZIC2

**Format**

0.5 mg/ml in Tris saline, 0.02% sodium azide, pH7.3 with 0.5% bovine serum albumin

**Storage**

Maintain refrigerated at 2-8°C for up to 6 months. For long term storage store at -20°C in small aliquots to prevent freeze-thaw cycles.

**Precautions**

ZIC2 Antibody (C-Term) is for research use only and not for use in diagnostic or therapeutic procedures.

**ZIC2 Antibody (C-Term) - Protein Information****Name** ZIC2**Function**

Acts as a transcriptional activator or repressor. Plays important roles in the early stage of organogenesis of the CNS. Activates the transcription of the serotonin transporter SERT in uncrossed ipsilateral retinal ganglion cells (iRGCs) to refine eye- specific projections in primary visual targets. Its transcriptional activity is repressed by MDFIC. Involved in the formation of the ipsilateral retinal projection at the optic chiasm midline. Drives the expression of EPHB1 on ipsilaterally projecting growth cones. Binds to the minimal GLI-consensus sequence

5'-TGGGTGGTC-3'. Associates to the basal SERT promoter region from ventrotemporal retinal segments of retinal embryos.

#### Cellular Location

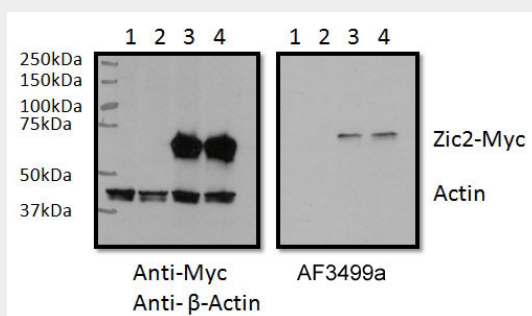
Nucleus. Cytoplasm. Note=Localizes in the cytoplasm in presence of MDFIC overexpression. Both phosphorylated and unphosphorylated forms are localized in the nucleus (By similarity).

#### ZIC2 Antibody (C-Term) - Protocols

Provided below are standard protocols that you may find useful for product applications.

- [Western Blot](#)
- [Blocking Peptides](#)
- [Dot Blot](#)
- [Immunohistochemistry](#)
- [Immunofluorescence](#)
- [Immunoprecipitation](#)
- [Flow Cytometry](#)
- [Cell Culture](#)

#### ZIC2 Antibody (C-Term) - Images



RWPE1 lysate (60ug protein in RIPA buffer) overexpressing Human ZIC2 with C-terminal MYC tag probed with AF3499a (0.5ug/ml) in the right panel and probed with anti-MYC Tag (1/1000) and anti-beta-Actin in the left panel. Mock-transfected RWPE1 in lanes 1 and expressing GFP in lanes 2. Primary incubations were overnight at 4C. Detected by chemiluminescence.

#### ZIC2 Antibody (C-Term) - Background

This antibody is expected to NOT cross-react with other ZIC proteins.

#### ZIC2 Antibody (C-Term) - References

Expression status of Zic family member 2 as a prognostic marker for oral squamous cell carcinoma. Sakuma K, Kasamatsu A, Yamatoji M, Yamano Y, Fushimi K, Iyoda M, Ogoshi K, Shinozuka K, Ogawara K, Shiiba M, Tanzawa H, Uzawa K, Journal of cancer research and clinical oncology 2010 Apr 136 (4): 553-9. PMID: 19784848