

TXNDC5 (aa281-295) Antibody (internal region)
Peptide-affinity purified goat antibody
Catalog # AF3524a**Specification**

TXNDC5 (aa281-295) Antibody (internal region) - Product Information

Application	WB, E
Primary Accession	Q8NBS9
Other Accession	NP_110437.2 , NP_001139021.1 , 81567 , 105245 (mouse)
Reactivity	Human, Mouse
Host	Goat
Clonality	Polyclonal
Concentration	0.5 mg/ml
Isotype	IgG
Calculated MW	47629

TXNDC5 (aa281-295) Antibody (internal region) - Additional Information

Gene ID 81567

Other Names

Thioredoxin domain-containing protein 5, Endoplasmic reticulum resident protein 46, ER protein 46, ERp46, Thioredoxin-like protein p46, TXNDC5, TLP46

Dilution

WB~~1:1000

E~~N/A

Format

0.5 mg/ml in Tris saline, 0.02% sodium azide, pH7.3 with 0.5% bovine serum albumin

Storage

Maintain refrigerated at 2-8°C for up to 6 months. For long term storage store at -20°C in small aliquots to prevent freeze-thaw cycles.

Precautions

TXNDC5 (aa281-295) Antibody (internal region) is for research use only and not for use in diagnostic or therapeutic procedures.

TXNDC5 (aa281-295) Antibody (internal region) - Protein Information

Name TXNDC5 ([HGNC:21073](#))

Synonyms TLP46

Function

Protein disulfide isomerase of the endoplasmic reticulum lumen involved in the formation of disulfide bonds in proteins. Can reduce insulin disulfide bonds.

Cellular Location

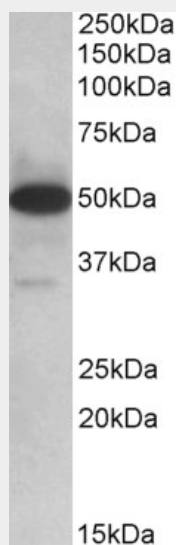
Endoplasmic reticulum lumen {ECO:0000250|UniProtKB:Q91W90, ECO:0000255|PROSITE-ProRule:PRU10138}

TXNDC5 (aa281-295) Antibody (internal region) - Protocols

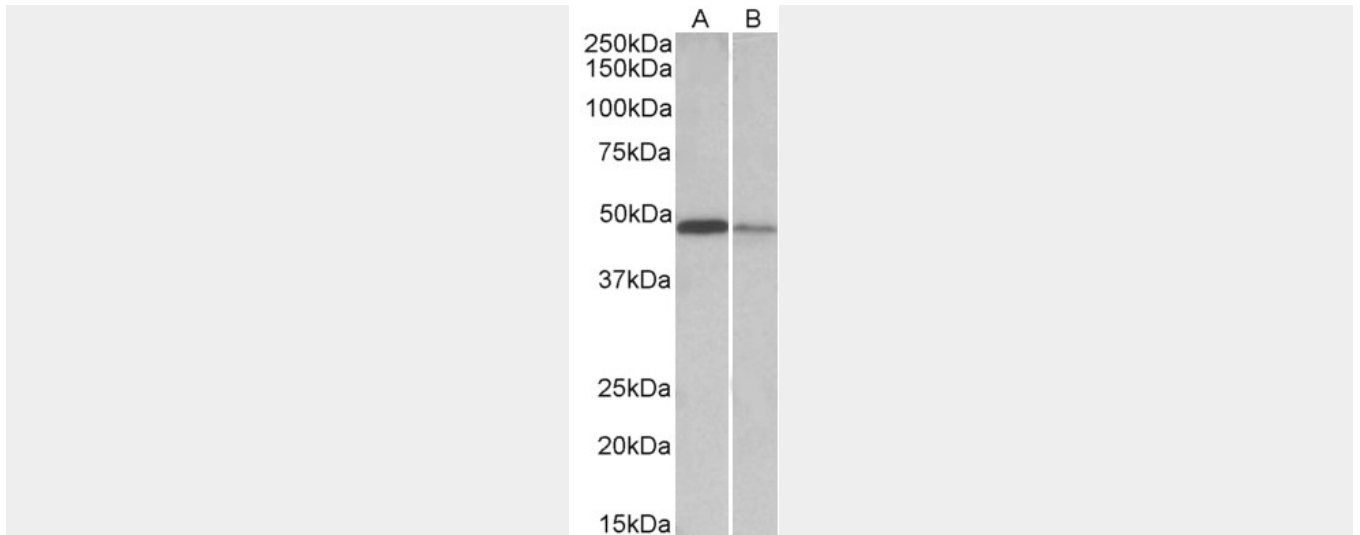
Provided below are standard protocols that you may find useful for product applications.

- [Western Blot](#)
- [Blocking Peptides](#)
- [Dot Blot](#)
- [Immunohistochemistry](#)
- [Immunofluorescence](#)
- [Immunoprecipitation](#)
- [Flow Cytometry](#)
- [Cell Culture](#)

TXNDC5 (aa281-295) Antibody (internal region) - Images



AF3524a (0.1 µg/ml) staining of Human Lymph Nodes lysate (35 µg protein in RIPA buffer). Primary incubation was 1 hour. Detected by chemiluminescence.



EB10679 (0.1 $\mu\text{g/ml}$) staining of Mouse Lymph Nodes (A) and Mouse Intestine (B) lysates (35 μg protein in RIPA buffer). Primary incubation was 1 hour. Detected by chemiluminescence.

TXNDC5 (aa281-295) Antibody (internal region) - Background

This antibody is expected to recognize both reported isoforms (NP_110437.2; NP_001139021.1).

TXNDC5 (aa281-295) Antibody (internal region) - References

The influence of TXNDC5 gene on gastric cancer cell. Zhang L, Hou Y, Li N, Wu K, Zhai J. J Cancer Res Clin Oncol. 2010 Oct;136(10):1497-505. PMID: 20157732