

**IDH3A Antibody (C-Term)**  
**Peptide-affinity purified goat antibody**  
**Catalog # AF3574a****Specification**

---

**IDH3A Antibody (C-Term) - Product Information**

|                   |   |
|-------------------|---|
| Application       | WB, E   |
| Primary Accession | <a href="#">P50213</a>  |
| Other Accession   | <a href="#">NP_005521.1</a> , <a href="#">3419</a> , <a href="#">67834 (mouse)</a> , <a href="#">114096 (rat)</a> |
| Reactivity        | Human, Mouse, Rat   |
| Predicted         | Pig, Dog  |
| Host              | Goat  |
| Clonality         | Polyclonal  |
| Concentration     | 0.5 mg/ml   |
| Isotype           | IgG   |
| Calculated MW     | 39592   |

**IDH3A Antibody (C-Term) - Additional Information****Gene ID** 3419**Other Names**

Isocitrate dehydrogenase [NAD] subunit alpha, mitochondrial, 1.1.1.41, Isocitric dehydrogenase subunit alpha, NAD(+)-specific ICDH subunit alpha, IDH3A

**Dilution**

WB~~1:1000

E~~N/A

**Format**

0.5 mg/ml in Tris saline, 0.02% sodium azide, pH7.3 with 0.5% bovine serum albumin

**Storage**

Maintain refrigerated at 2-8°C for up to 6 months. For long term storage store at -20°C in small aliquots to prevent freeze-thaw cycles.

**Precautions**

IDH3A Antibody (C-Term) is for research use only and not for use in diagnostic or therapeutic procedures.

**IDH3A Antibody (C-Term) - Protein Information****Name** IDH3A ([HGNC:5384](#))**Function**

Catalytic subunit of the enzyme which catalyzes the decarboxylation of isocitrate (ICT) into

alpha-ketoglutarate. The heterodimer composed of the alpha (IDH3A) and beta (IDH3B) subunits and the heterodimer composed of the alpha (IDH3A) and gamma (IDH3G) subunits, have considerable basal activity but the full activity of the heterotetramer (containing two subunits of IDH3A, one of IDH3B and one of IDH3G) requires the assembly and cooperative function of both heterodimers.

#### **Cellular Location**

Mitochondrion.

#### **IDH3A Antibody (C-Term) - Protocols**

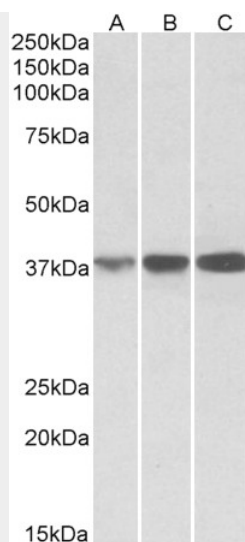
Provided below are standard protocols that you may find useful for product applications.

- [Western Blot](#)
- [Blocking Peptides](#)
- [Dot Blot](#)
- [Immunohistochemistry](#)
- [Immunofluorescence](#)
- [Immunoprecipitation](#)
- [Flow Cytometry](#)
- [Cell Culture](#)

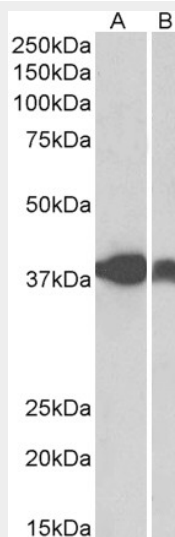
#### **IDH3A Antibody (C-Term) - Images**



AF3574a (0.1 µg/ml) staining of Human Lymph Nodes lysate (35 µg protein in RIPA buffer). Primary incubation was 1 hour. Detected by chemiluminescence.



AF3574a (0.1 µg/ml) staining of Human (A), Mouse (B) and Rat (C) Spleen lysates (35 µg protein in RIPA buffer). Primary incubation was 1 hour. Detected by chemiluminescence.



AF3574a (0.3 µg/ml) staining of Pig Spleen (A) and Pig Skeletal Muscle (B) lysates (35 µg protein in RIPA buffer). Primary incubation was 1 hour. Detected by chemiluminescence.

#### **IDH3A Antibody (C-Term) - References**

Role of alpha-Asp181, beta-Asp192, and gamma-Asp190 in the distinctive subunits of human NAD-specific isocitrate dehydrogenase. Bzymek KP, Colman RF. Biochemistry. 2007 May 8;46(18):5391-7. PMID: 17432878