

Hsd11b1 (mouse) Antibody (internal region)
Peptide-affinity purified goat antibody
Catalog # AF3603a**Specification**

Hsd11b1 (mouse) Antibody (internal region) - Product Information

Application	WB
Primary Accession	P50172.3
Other Accession	NP_032314.2 , 15483 (mouse) , 25116 (rat)
Reactivity	Mouse
Predicted	Rat
Host	Goat
Clonality	Polyclonal
Concentration	0.5 mg/ml
Isotype	IgG

Hsd11b1 (mouse) Antibody (internal region) - Additional Information**Other Names**

Hsd11b1; hydroxysteroid (11-beta) dehydrogenase 1; 11-DH; 11-beta-HSD1; HDL; HSD11; HSD11B; HSD11L; 11-beta-hydroxysteroid dehydrogenase 1; corticosteroid 11-beta-dehydrogenase isozyme 1; short chain dehydrogenase/reductase family 26C, member 1

Format

0.5 mg/ml in Tris saline, 0.02% sodium azide, pH7.3 with 0.5% bovine serum albumin

Storage

Maintain refrigerated at 2-8°C for up to 6 months. For long term storage store at -20°C in small aliquots to prevent freeze-thaw cycles.

Precautions

Hsd11b1 (mouse) Antibody (internal region) is for research use only and not for use in diagnostic or therapeutic procedures.

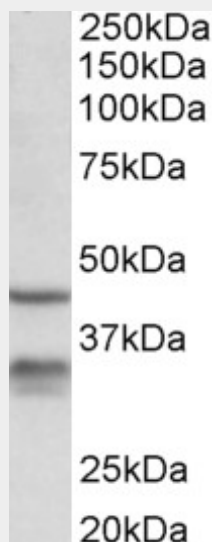
Hsd11b1 (mouse) Antibody (internal region) - Protein Information**Hsd11b1 (mouse) Antibody (internal region) - Protocols**

Provided below are standard protocols that you may find useful for product applications.

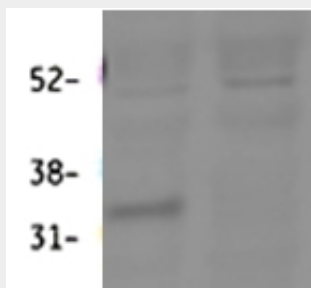
- [Western Blot](#)
- [Blocking Peptides](#)
- [Dot Blot](#)
- [Immunohistochemistry](#)
- [Immunofluorescence](#)
- [Immunoprecipitation](#)

- [Flow Cytometry](#)
- [Cell Culture](#)

Hsd11b1 (mouse) Antibody (internal region) - Images



AF3603a (0.3 µg/ml) staining of Mouse Lung lysate (35 µg protein in RIPA buffer). Primary incubation was 1 hour. Detected by chemiluminescence.



AF3603a (0.3 µg/ml) staining of Mouse Lung lysate (60 µg protein in RIPA buffer). First lane shows wildtype and second lane shows knockout background. Primary incubation was overnight. Detected by fluorescence with Li-cor). Data obtained from Prof. K. Chapman and Zhenguang Zhang, Centre for Cardiovascular Sciences, Queen's Medical Research Institute, Edinburgh, UK

Hsd11b1 (mouse) Antibody (internal region) - References

Cerebrospinal fluid corticosteroid levels and cortisol metabolism in patients with idiopathic intracranial hypertension: a link between 11beta-HSD1 and intracranial pressure regulation? Sinclair AJ, Walker EA, Burdon MA, van Beek AP, Kema IP, Hughes BA, Murray PI, Nightingale PG, Stewart PM, Rauz S, Tomlinson JW. J Clin Endocrinol Metab. 2010 Dec;95(12):5348-56. PMID: 20826586