

**Transglutaminase 3 (aa598-610) Antibody (internal region)**  
**Peptide-affinity purified goat antibody**  
**Catalog # AF3612a****Specification**

---

**Transglutaminase 3 (aa598-610) Antibody (internal region) - Product Information**

Application	WB, E
Primary Accession	<a href="#">Q08188</a>
Other Accession	<a href="#">NP_003236.3</a> , <a href="#">7053</a>
Reactivity	Human
Host	Goat
Clonality	Polyclonal
Concentration	0.5 mg/ml
Isotype	IgG
Calculated MW	76632

**Transglutaminase 3 (aa598-610) Antibody (internal region) - Additional Information****Gene ID** 7053**Other Names**

Protein-glutamine gamma-glutamyltransferase E, 2.3.2.13, Transglutaminase E, TG(E), TGE, TGase E, Transglutaminase-3, TGase-3, Protein-glutamine gamma-glutamyltransferase E 50 kDa catalytic chain, Protein-glutamine gamma-glutamyltransferase E 27 kDa non-catalytic chain, TGM3

**Dilution**

WB~~~1:1000

E~~N/A

**Format**

0.5 mg/ml in Tris saline, 0.02% sodium azide, pH7.3 with 0.5% bovine serum albumin

**Storage**

Maintain refrigerated at 2-8°C for up to 6 months. For long term storage store at -20°C in small aliquots to prevent freeze-thaw cycles.

**Precautions**

Transglutaminase 3 (aa598-610) Antibody (internal region) is for research use only and not for use in diagnostic or therapeutic procedures.

**Transglutaminase 3 (aa598-610) Antibody (internal region) - Protein Information****Name** TGM3**Function**

Catalyzes the calcium-dependent formation of isopeptide cross-links between glutamine and lysine residues in various proteins, as well as the conjugation of polyamines to proteins. Involved in the

formation of the cornified envelope (CE), a specialized component consisting of covalent cross-links of proteins beneath the plasma membrane of terminally differentiated keratinocytes. Catalyzes small proline-rich proteins (SPRR1 and SPRR2) and LOR cross-linking to form small interchain oligomers, which are further cross-linked by TGM1 onto the growing CE scaffold (By similarity). In hair follicles, involved in cross-linking structural proteins to hardening the inner root sheath.

#### Cellular Location

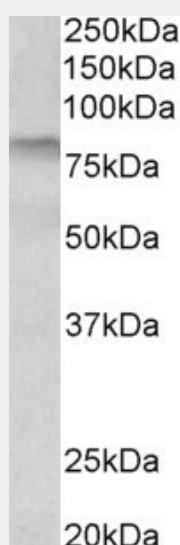
Cytoplasm.

#### Transglutaminase 3 (aa598-610) Antibody (internal region) - Protocols

Provided below are standard protocols that you may find useful for product applications.

- [Western Blot](#)
- [Blocking Peptides](#)
- [Dot Blot](#)
- [Immunohistochemistry](#)
- [Immunofluorescence](#)
- [Immunoprecipitation](#)
- [Flow Cytometry](#)
- [Cell Culture](#)

#### Transglutaminase 3 (aa598-610) Antibody (internal region) - Images



AF3612a (0.3 µg/ml) staining of Human Tonsil lysate (35 µg protein in RIPA buffer). Primary incubation was 1 hour. Detected by chemiluminescence.

#### Transglutaminase 3 (aa598-610) Antibody (internal region) - References

Identification of a preferred substrate peptide for transglutaminase 3 and detection of in situ activity in skin and hair follicles. Yamane A, Fukui M, Sugimura Y, Itoh M, Alea MP, Thomas V, El Alaoui S, Akiyama M, Hitomi K. FEBS J. 2010 Sep;277(17):3564-74. PMID: 20716179