

**TSHR (aa101-115) Antibody (internal region)**  
Peptide-affinity purified goat antibody  
Catalog # AF3630a

**Specification**

---

**TSHR (aa101-115) Antibody (internal region) - Product Information**

Application	WB, E
Primary Accession	<a href="#">P16473</a>
Other Accession	<a href="#">NP_000360.2</a> , <a href="#">NP_001018046.1</a> , <a href="#">7253</a>
Reactivity	Human
Host	Goat
Clonality	Polyclonal
Concentration	0.5 mg/ml
Isotype	IgG
Calculated MW	86844

**TSHR (aa101-115) Antibody (internal region) - Additional Information**

**Gene ID** 7253

**Other Names**

Thyrotropin receptor, Thyroid-stimulating hormone receptor, TSH-R, TSHR, LGR3

**Dilution**

WB~~1:1000

E~~N/A

**Format**

0.5 mg/ml in Tris saline, 0.02% sodium azide, pH7.3 with 0.5% bovine serum albumin

**Storage**

Maintain refrigerated at 2-8°C for up to 6 months. For long term storage store at -20°C in small aliquots to prevent freeze-thaw cycles.

**Precautions**

TSHR (aa101-115) Antibody (internal region) is for research use only and not for use in diagnostic or therapeutic procedures.

**TSHR (aa101-115) Antibody (internal region) - Protein Information**

**Name** TSHR

**Synonyms** LGR3

**Function**

Receptor for the thyroid-stimulating hormone (TSH) or thyrotropin (PubMed:<a href="http://www.uniprot.org/citations/11847099" target="\_blank">11847099</a>, PubMed:<a

href="http://www.uniprot.org/citations/12045258" target="\_blank">12045258</a>). Also acts as a receptor for the heterodimeric glycoprotein hormone (GPHA2:GPHB5) or thyrostimulin (PubMed:<a href="http://www.uniprot.org/citations/12045258" target="\_blank">12045258</a>). TSHR is coupled to G(s) proteins and mediates the activation of adenylate cyclase (PubMed:<a href="http://www.uniprot.org/citations/11847099" target="\_blank">11847099</a>, PubMed:<a href="http://www.uniprot.org/citations/35940205" target="\_blank">35940205</a>, PubMed:<a href="http://www.uniprot.org/citations/35940204" target="\_blank">35940204</a>). This leads to the generation of cyclic adenosine monophosphate (cAMP), which in turn activates protein kinase A (PKA). PKA subsequently phosphorylates downstream targets involved in thyroid hormone biosynthesis and secretion, including thyroid peroxidase (TPO) and the sodium/iodide symporter (NIS) (PubMed:<a href="http://www.uniprot.org/citations/27638195" target="\_blank">27638195</a>). Additionally, plays a central role in controlling thyroid cell metabolism (By similarity).

#### Cellular Location

Cell membrane; Multi-pass membrane protein. Basolateral cell membrane; Multi-pass membrane protein

#### Tissue Location

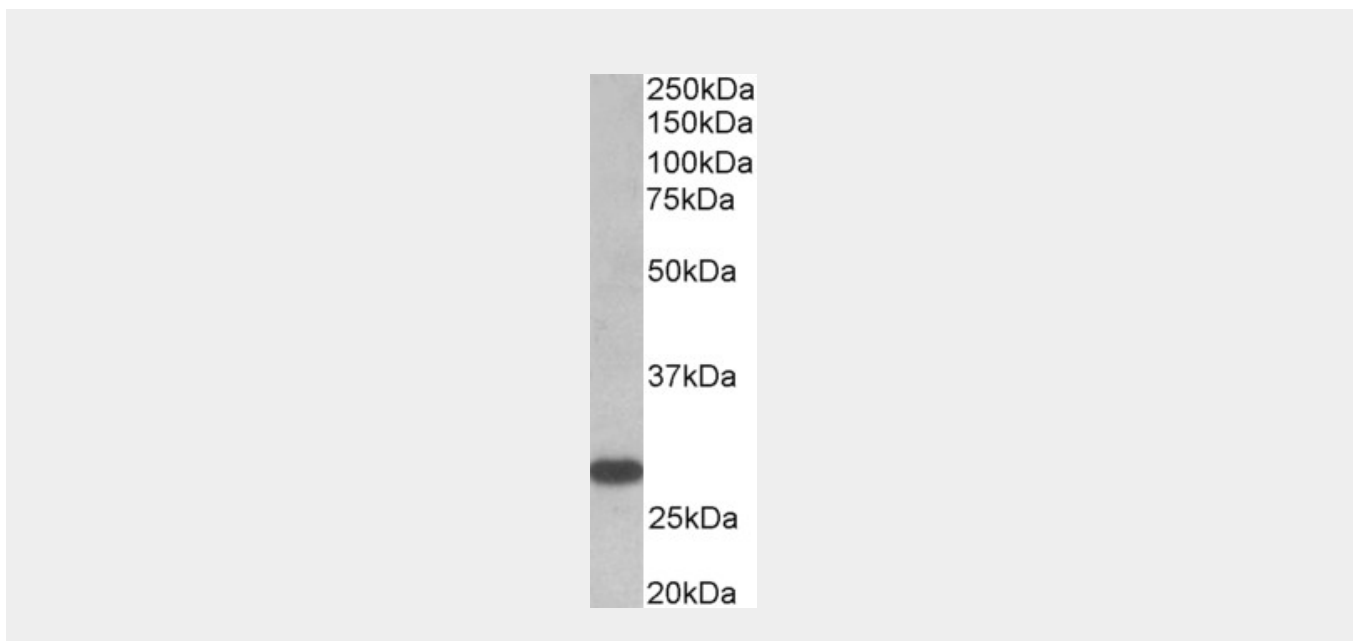
Expressed in thyroid cells (at protein level) (PubMed:11847099). Expressed in the thyroid (PubMed:2610690)

### TSHR (aa101-115) Antibody (internal region) - Protocols

Provided below are standard protocols that you may find useful for product applications.

- [Western Blot](#)
- [Blocking Peptides](#)
- [Dot Blot](#)
- [Immunohistochemistry](#)
- [Immunofluorescence](#)
- [Immunoprecipitation](#)
- [Flow Cytometry](#)
- [Cell Culture](#)

### TSHR (aa101-115) Antibody (internal region) - Images



AF3630a (0.5 µg/ml) staining of Human Thyroid gland lysate (35 µg protein in RIPA buffer). Primary incubation was 1 hour. Detected by chemiluminescence.

#### **TSHR (aa101-115) Antibody (internal region) - Background**

This antibody is expected to recognize reported isoform 1 (NP\_000360.2) and isoform 2 (NP\_001018046.1). The immunizing peptide sequence corresponds to a part of the extracellular domain.

#### **TSHR (aa101-115) Antibody (internal region) - References**

Subclinical nonautoimmune hyperthyroidism in a family segregates with a thyrotropin receptor mutation with weakly increased constitutive activity. Nishihara E, Chen CR, Higashiyama T, Mizutori-Sasai Y, Ito M, Kubota S, Amino N, Miyauchi A, Rapoport B. *Thyroid*. 2010 Nov;20(11):1307-14. PMID: 20929407