

FGF5 (isoform1) Antibody (C-Term)
Peptide-affinity purified goat antibody
Catalog # AF3652a**Specification**

FGF5 (isoform1) Antibody (C-Term) - Product Information

Application	WB, IHC
Primary Accession	P12034
Other Accession	NP_004455.2 , NP_149134.1 , 2250
Reactivity	Human
Host	Goat
Clonality	Polyclonal
Concentration	0.5 mg/ml
Isotype	IgG
Calculated MW	29551

FGF5 (isoform1) Antibody (C-Term) - Additional Information**Gene ID** 2250**Other Names**

Fibroblast growth factor 5, FGF-5, Heparin-binding growth factor 5, HBGF-5, Smag-82, FGF5

Format

0.5 mg/ml in Tris saline, 0.02% sodium azide, pH7.3 with 0.5% bovine serum albumin

Storage

Maintain refrigerated at 2-8°C for up to 6 months. For long term storage store at -20°C in small aliquots to prevent freeze-thaw cycles.

Precautions

FGF5 (isoform1) Antibody (C-Term) is for research use only and not for use in diagnostic or therapeutic procedures.

FGF5 (isoform1) Antibody (C-Term) - Protein Information**Name** FGF5**Function**

Plays an important role in the regulation of cell proliferation and cell differentiation. Required for normal regulation of the hair growth cycle. Functions as an inhibitor of hair elongation by promoting progression from anagen, the growth phase of the hair follicle, into catagen the apoptosis-induced regression phase (By similarity).

Cellular Location

Secreted.

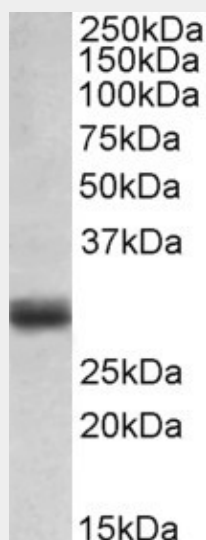
Tissue Location

Expressed in neonatal brain.

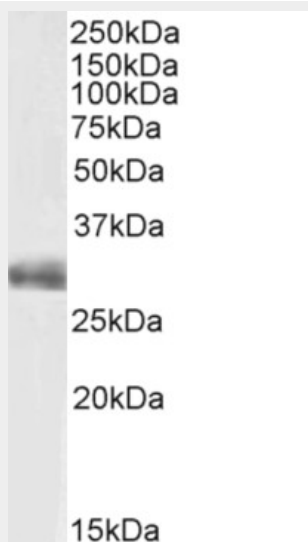
FGF5 (isoform1) Antibody (C-Term) - Protocols

Provided below are standard protocols that you may find useful for product applications.

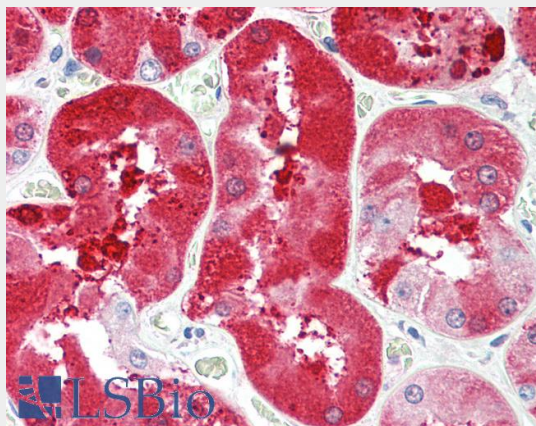
- [Western Blot](#)
- [Blocking Peptides](#)
- [Dot Blot](#)
- [Immunohistochemistry](#)
- [Immunofluorescence](#)
- [Immunoprecipitation](#)
- [Flow Cytometry](#)
- [Cell Culture](#)

FGF5 (isoform1) Antibody (C-Term) - Images

EB1181 (0.1 µg/ml) staining of Human Placenta lysate (35 µg protein in RIPA buffer). Primary incubation was 1 hour. Detected by chemiluminescence.



EB1181 (0.1µg/ml) staining of Human Placenta lysate (35µg protein in RIPA buffer). Detected by chemiluminescence.



EB1181 (5µg/ml) staining of paraffin embedded Human Kidney. Steamed antigen retrieval with citrate buffer pH 6, AP-staining. **This data is from a previous batch, not on sale.**

FGF5 (isoform1) Antibody (C-Term) - Background

This antibody is expected to recognize reported isoform 1 (NP_004455.2) only.

FGF5 (isoform1) Antibody (C-Term) - References

Common variants in or near FGF5, CYP17A1 and MTHFR genes are associated with blood pressure and hypertension in Chinese Hans. Liu C, Li H, Qi Q, Lu L, Gan W, Loos RJ, Lin X. J Hypertens. 2011 Jan;29(1):70-5. PMID: 20852445