

**CADM1/TSLOC1 Antibody (internal region)**  
**Peptide-affinity purified goat antibody**  
**Catalog # AF3679a****Specification**

---

**CADM1/TSLOC1 Antibody (internal region) - Product Information**

Application	WB, E
Primary Accession	<a href="#">Q9BY67</a>
Other Accession	<a href="#">NP_055148.3</a> , <a href="#">NP_001091987.1</a> , <a href="#">23705</a> , <a href="#">54725</a> (mouse), <a href="#">363058</a> (rat)
Reactivity	Mouse
Predicted	Human, Rat, Pig, Dog
Host	Goat
Clonality	Polyclonal
Concentration	0.5 mg/ml
Isotype	IgG
Calculated MW	48509

**CADM1/TSLOC1 Antibody (internal region) - Additional Information****Gene ID** 23705**Other Names**

Cell adhesion molecule 1, Immunoglobulin superfamily member 4, IgSF4, Nectin-like protein 2, NECL-2, Spermatogenic immunoglobulin superfamily, SgIgSF, Synaptic cell adhesion molecule, SynCAM, Tumor suppressor in lung cancer 1, TSLOC-1, CADM1 ([http://www.genenames.org/cgi-bin/gene\\_symbol\\_report?hgnc\\_id=5951](http://www.genenames.org/cgi-bin/gene_symbol_report?hgnc_id=5951))  
target="\_blank">HGNC:5951</a>)

**Dilution**WB~~1:1000  
E~~N/A**Format**

0.5 mg/ml in Tris saline, 0.02% sodium azide, pH7.3 with 0.5% bovine serum albumin

**Storage**

Maintain refrigerated at 2-8°C for up to 6 months. For long term storage store at -20°C in small aliquots to prevent freeze-thaw cycles.

**Precautions**

CADM1/TSLOC1 Antibody (internal region) is for research use only and not for use in diagnostic or therapeutic procedures.

**CADM1/TSLOC1 Antibody (internal region) - Protein Information****Name** CADM1 ([HGNC:5951](#))

**Function**

Mediates homophilic cell-cell adhesion in a  $\text{Ca}^{2+}$ - independent manner (PubMed:<a href="http://www.uniprot.org/citations/12050160" target="\_blank">12050160</a>, PubMed:<a href="http://www.uniprot.org/citations/22438059" target="\_blank">22438059</a>). Also mediates heterophilic cell-cell adhesion with CADM3 and NECTIN3 in a  $\text{Ca}^{2+}$ - independent manner (By similarity). Interaction with CRTAM promotes natural killer (NK) cell cytotoxicity and interferon-gamma (IFN-gamma) secretion by CD8+ cells in vitro as well as NK cell-mediated rejection of tumors expressing CADM1 in vivo (PubMed:<a href="http://www.uniprot.org/citations/15811952" target="\_blank">15811952</a>). In mast cells, may mediate attachment to and promote communication with nerves (PubMed:<a href="http://www.uniprot.org/citations/15905536" target="\_blank">15905536</a>). CADM1, together with MITF, is essential for development and survival of mast cells in vivo (PubMed:<a href="http://www.uniprot.org/citations/22438059" target="\_blank">22438059</a>). By interacting with CRTAM and thus promoting the adhesion between CD8+ T- cells and CD8+ dendritic cells, regulates the retention of activated CD8+ T-cell within the draining lymph node (By similarity). Required for the intestinal retention of intraepithelial CD4+ CD8+ T-cells and, to a lesser extent, intraepithelial and lamina propria CD8+ T-cells and CD4+ T-cells (By similarity). Interaction with CRTAM promotes the adhesion to gut-associated CD103+ dendritic cells, which may facilitate the expression of gut-homing and adhesion molecules on T-cells and the conversion of CD4+ T-cells into CD4+ CD8+ T-cells (By similarity). Acts as a synaptic cell adhesion molecule and plays a role in the formation of dendritic spines and in synapse assembly (By similarity). May be involved in neuronal migration, axon growth, pathfinding, and fasciculation on the axons of differentiating neurons (By similarity). May play diverse roles in the spermatogenesis including in the adhesion of spermatocytes and spermatids to Sertoli cells and for their normal differentiation into mature spermatozoa (By similarity). Acts as a tumor suppressor in non-small-cell lung cancer (NSCLC) cells (PubMed:<a href="http://www.uniprot.org/citations/11279526" target="\_blank">11279526</a>, PubMed:<a href="http://www.uniprot.org/citations/12234973" target="\_blank">12234973</a>). May contribute to the less invasive phenotypes of lepidic growth tumor cells (PubMed:<a href="http://www.uniprot.org/citations/12920246" target="\_blank">12920246</a>).

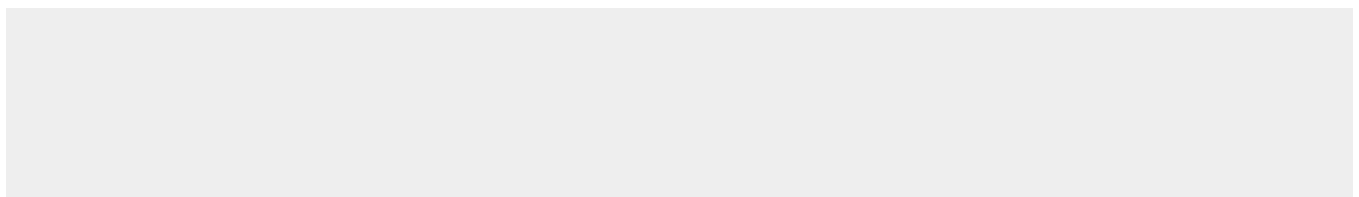
**Cellular Location**

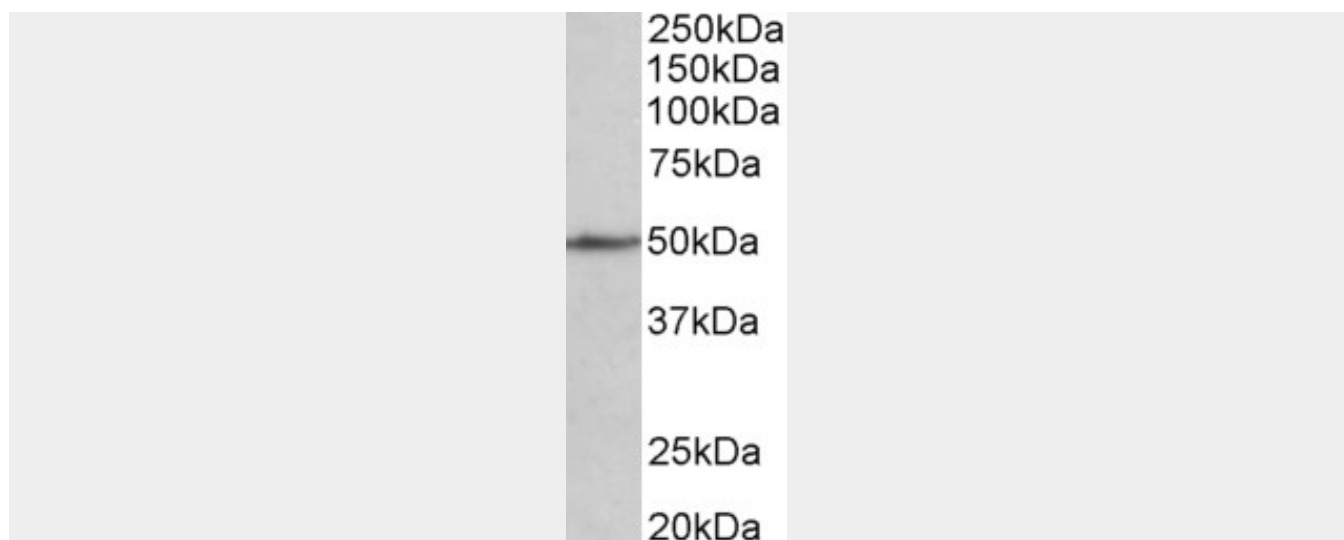
Cell membrane; Single-pass type I membrane protein. Synapse  
{ECO:0000250|UniProtKB:Q8R5M8} Note=Localized to the basolateral plasma membrane of epithelial cells in gall bladder. {ECO:0000250|UniProtKB:Q8R5M8}

**CADM1/TSLC1 Antibody (internal region) - Protocols**

Provided below are standard protocols that you may find useful for product applications.

- [Western Blot](#)
- [Blocking Peptides](#)
- [Dot Blot](#)
- [Immunohistochemistry](#)
- [Immunofluorescence](#)
- [Immunoprecipitation](#)
- [Flow Cytometry](#)
- [Cell Culture](#)

**CADM1/TSLC1 Antibody (internal region) - Images**



AF3679a (1 µg/ml) staining of Mouse fetal Heart lysate (35 µg protein in RIPA buffer). Primary incubation was 1 hour. Detected by chemiluminescence.

#### **CADM1/TSLC1 Antibody (internal region) - Background**

This antibody is expected to recognize both reported isoforms (NP\_055148.3; NP\_001091987.1).

#### **CADM1/TSLC1 Antibody (internal region) - References**

Function and histopathology of a cell adhesion molecule TSLC1 in cancer. Liang QL, Chen GQ, Li ZY, Wang BR. Cancer Invest. 2011 Feb;29(2):107-12. PMID: 21329006