

**SPON2 (301-315) Antibody (internal region, near C-Term)**  
**Peptide-affinity purified goat antibody**  
**Catalog # AF3691a****Specification**

---

**SPON2 (301-315) Antibody (internal region, near C-Term) - Product Information**

Application	WB, E
Primary Accession	<a href="#">Q9BUD6</a>
Other Accession	<a href="#">NP_036577.1</a> , <a href="#">10417</a> , <a href="#">100689 (mouse)</a> , <a href="#">171569 (rat)</a>
Reactivity	Human
Predicted	Mouse, Rat, Dog
Host	Goat
Clonality	Polyclonal
Concentration	0.5 mg/ml
Isotype	IgG
Calculated MW	35788

**SPON2 (301-315) Antibody (internal region, near C-Term) - Additional Information****Gene ID** 10417**Other Names**

Spondin-2, Differentially expressed in cancerous and non-cancerous lung cells 1, DIL-1, Mindin, SPON2, DIL1

**Dilution**

WB~~1:1000

E~~N/A

**Format**

0.5 mg/ml in Tris saline, 0.02% sodium azide, pH7.3 with 0.5% bovine serum albumin

**Storage**

Maintain refrigerated at 2-8°C for up to 6 months. For long term storage store at -20°C in small aliquots to prevent freeze-thaw cycles.

**Precautions**

SPON2 (301-315) Antibody (internal region, near C-Term) is for research use only and not for use in diagnostic or therapeutic procedures.

**SPON2 (301-315) Antibody (internal region, near C-Term) - Protein Information****Name** SPON2**Synonyms** DIL1

**Function**

Cell adhesion protein that promotes adhesion and outgrowth of hippocampal embryonic neurons. Binds directly to bacteria and their components and functions as an opsonin for macrophage phagocytosis of bacteria. Essential in the initiation of the innate immune response and represents a unique pattern-recognition molecule in the ECM for microbial pathogens (By similarity). Binds bacterial lipopolysaccharide (LPS).

**Cellular Location**

Secreted, extracellular space, extracellular matrix

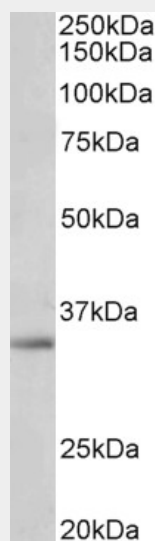
**Tissue Location**

Expressed in normal lung tissue but not in lung carcinoma cell lines.

**SPON2 (301-315) Antibody (internal region, near C-Term) - Protocols**

Provided below are standard protocols that you may find useful for product applications.

- [Western Blot](#)
- [Blocking Peptides](#)
- [Dot Blot](#)
- [Immunohistochemistry](#)
- [Immunofluorescence](#)
- [Immunoprecipitation](#)
- [Flow Cytometry](#)
- [Cell Culture](#)

**SPON2 (301-315) Antibody (internal region, near C-Term) - Images**

AF3691a (1 µg/ml) staining of A549 lysate (35 µg protein in RIPA buffer). Primary incubation was 1 hour. Detected by chemiluminescence.

**SPON2 (301-315) Antibody (internal region, near C-Term) - Background**

Reported variants represent identical protein: NP\_036577.1, NP\_001121797.1, NP\_001185950.1

**SPON2 (301-315) Antibody (internal region, near C-Term) - References**

Positive regulation of spondin 2 by thyroid hormone is associated with cell migration and invasion. Liao CH, Yeh SC, Huang YH, Chen RN, Tsai MM, Chen WJ, Chi HC, Tai PJ, Liao CJ, Wu SM, Cheng WL, Pai LM, Lin KH. Endocr Relat Cancer. 2010 Jan 29;17(1):99-111. PMID: 19903741