

Cyclin D-type binding-protein 1 (aa322-333) Antibody (internal region, near C-Term)
Peptide-affinity purified goat antibody
Catalog # AF3711a

Specification

**Cyclin D-type binding-protein 1 (aa322-333) Antibody (internal region, near C-Term) -
Product Information**

| | |
|-------------------|---|
| Application | WB, E |
| Primary Accession | O95273 |
| Other Accession | NP_036274.3 , 23582 |
| Reactivity | Human |
| Predicted | Pig, Dog |
| Host | Goat |
| Clonality | Polyclonal |
| Concentration | 0.5 mg/ml |
| Isotype | IgG |
| Calculated MW | 40262 |

**Cyclin D-type binding-protein 1 (aa322-333) Antibody (internal region, near C-Term) -
Additional Information**

Gene ID 23582

Other Names

Cyclin-D1-binding protein 1, Grap2 and cyclin-D-interacting protein, Human homolog of Maid, CCNDBP1, DIP1, GCIP, HHM

Dilution

WB~~1:1000
E~~N/A

Format

0.5 mg/ml in Tris saline, 0.02% sodium azide, pH7.3 with 0.5% bovine serum albumin

Storage

Maintain refrigerated at 2-8°C for up to 6 months. For long term storage store at -20°C in small aliquots to prevent freeze-thaw cycles.

Precautions

Cyclin D-type binding-protein 1 (aa322-333) Antibody (internal region, near C-Term) is for research use only and not for use in diagnostic or therapeutic procedures.

**Cyclin D-type binding-protein 1 (aa322-333) Antibody (internal region, near C-Term) -
Protein Information**

Name CCNDBP1

Synonyms DIP1, GCIP, HHM

Function

May negatively regulate cell cycle progression. May act at least in part via inhibition of the cyclin-D1/CDK4 complex, thereby preventing phosphorylation of RB1 and blocking E2F-dependent transcription.

Cellular Location

Cytoplasm. Nucleus.

Tissue Location

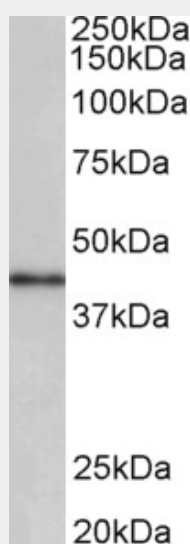
Ubiquitously expressed. Expression is down-regulated in a variety of tumor types including breast, colon, prostate and rectal tumors, and is up-regulated in certain hepatic carcinomas

Cyclin D-type binding-protein 1 (aa322-333) Antibody (internal region, near C-Term) - Protocols

Provided below are standard protocols that you may find useful for product applications.

- [Western Blot](#)
- [Blocking Peptides](#)
- [Dot Blot](#)
- [Immunohistochemistry](#)
- [Immunofluorescence](#)
- [Immunoprecipitation](#)
- [Flow Cytometry](#)
- [Cell Culture](#)

Cyclin D-type binding-protein 1 (aa322-333) Antibody (internal region, near C-Term) - Images



AF3711a (0.3 µg/ml) staining of Human Placenta lysate (35 µg protein in RIPA buffer). Primary incubation was 1 hour. Detected by chemiluminescence.

Cyclin D-type binding-protein 1 (aa322-333) Antibody (internal region, near C-Term) - References

Immunohistochemical expression of GCIP in breast carcinoma: relationship with tumour grade, disease free survival, mucinous differentiation and response to chemotherapy. Chen WC, Su PF, Jin YT, Chang MC, Chang TW. Histopathology. 2008 Nov;53(5):554-60. PMID: 18983464