

**STAT5A Antibody (C-Term)**  
**Peptide-affinity purified goat antibody**  
**Catalog # AF3718a****Specification**

---

**STAT5A Antibody (C-Term) - Product Information**

Application	WB, IHC, Pep-ELISA
Primary Accession	<a href="#">P42229</a>
Other Accession	<a href="#">NP_003143.2</a> , <a href="#">6776</a> , <a href="#">20850 (mouse)</a> , <a href="#">24918 (rat)</a>
Reactivity	Human
Predicted	Mouse, Rat
Host	Goat
Clonality	Polyclonal
Concentration	0.5 mg/ml
Isotype	IgG
Calculated MW	90647

**STAT5A Antibody (C-Term) - Additional Information****Gene ID** 6776**Other Names**

Signal transducer and activator of transcription 5A, STAT5A, STAT5

**Dilution**WB~~1:1000  
IHC~~1:100~500  
Pep-ELISA~~N/A**Format**

0.5 mg/ml in Tris saline, 0.02% sodium azide, pH7.3 with 0.5% bovine serum albumin

**Storage**

Maintain refrigerated at 2-8°C for up to 6 months. For long term storage store at -20°C in small aliquots to prevent freeze-thaw cycles.

**Precautions**

STAT5A Antibody (C-Term) is for research use only and not for use in diagnostic or therapeutic procedures.

**STAT5A Antibody (C-Term) - Protein Information****Name** STAT5A**Synonyms** STAT5

**Function**

Carries out a dual function: signal transduction and activation of transcription. Mediates cellular responses to the cytokine KITLG/SCF and other growth factors. Mediates cellular responses to ERBB4. May mediate cellular responses to activated FGFR1, FGFR2, FGFR3 and FGFR4. Binds to the GAS element and activates PRL- induced transcription. Regulates the expression of milk proteins during lactation.

**Cellular Location**

Cytoplasm. Nucleus. Note=Translocated into the nucleus in response to phosphorylation

**STAT5A Antibody (C-Term) - Protocols**

Provided below are standard protocols that you may find useful for product applications.

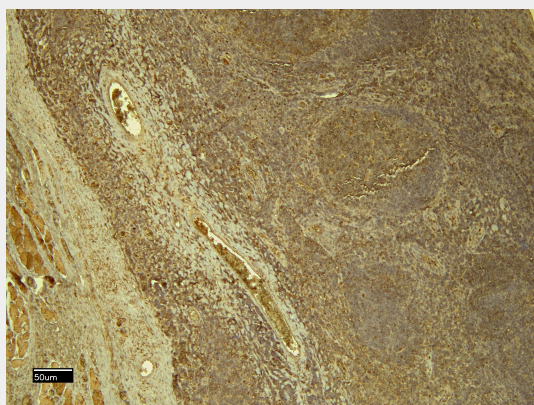
- [Western Blot](#)
- [Blocking Peptides](#)
- [Dot Blot](#)
- [Immunohistochemistry](#)
- [Immunofluorescence](#)
- [Immunoprecipitation](#)
- [Flow Cytometry](#)
- [Cell Culture](#)

**STAT5A Antibody (C-Term) - Images**

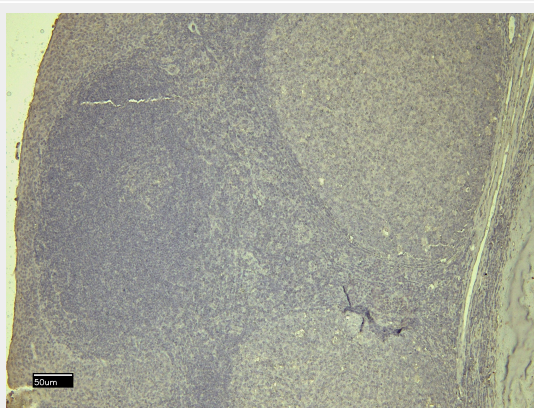
AF3718a (0.3 µg/ml) staining of K562 (A), Molt4 (B) and NIH3T3 (C) lysate (35 µg protein in RIPA buffer). Primary incubation was 1 hour. Detected by chemiluminescence.



EB11392 (0.3µg/ml) staining of K562 (A), Molt4 (B) and NIH3T3 (C) lysate (35µg protein in RIPA buffer). Primary incubation was 1 hour. Detected by chemiluminescence.



EB11392 (8µg/ml) staining of paraffin embedded Human Tonsil. Heat induced antigen retrieval with citrate buffer pH 6, HRP-staining.



EB11392 Negative Control showing staining of paraffin embedded Human Tonsil, with no primary antibody.

### STAT5A Antibody (C-Term) - Background

This antibody is not expected to cross-react with STAT5B.

### STAT5A Antibody (C-Term) - References

Src directly tyrosine-phosphorylates STAT5 on its activation site and is involved in erythropoietin-induced signaling pathway. Okutani Y, Kitanaka A, Tanaka T, Kamano H, Ohnishi H, Kubota Y, Ishida T, Takahara J. Oncogene. 2001 Oct 4;20(45):6643-50. PMID: 11641791