

STAT5A (aa681-692) Antibody (internal region)
Peptide-affinity purified goat antibody
Catalog # AF3719a**Specification**

STAT5A (aa681-692) Antibody (internal region) - Product Information

Application	WB, E
Primary Accession	P42229
Other Accession	NP_003143.2 , 6776 , 20850 (mouse) , 24918 (rat)
Reactivity	Human
Predicted	Mouse, Rat, Dog
Host	Goat
Clonality	Polyclonal
Concentration	0.5 mg/ml
Isotype	IgG
Calculated MW	90647

STAT5A (aa681-692) Antibody (internal region) - Additional Information**Gene ID** 6776**Other Names**

Signal transducer and activator of transcription 5A, STAT5A, STAT5

Dilution

WB~~1:1000

E~~N/A

Format

0.5 mg/ml in Tris saline, 0.02% sodium azide, pH7.3 with 0.5% bovine serum albumin

Storage

Maintain refrigerated at 2-8°C for up to 6 months. For long term storage store at -20°C in small aliquots to prevent freeze-thaw cycles.

Precautions

STAT5A (aa681-692) Antibody (internal region) is for research use only and not for use in diagnostic or therapeutic procedures.

STAT5A (aa681-692) Antibody (internal region) - Protein Information**Name** STAT5A**Synonyms** STAT5**Function**

Carries out a dual function: signal transduction and activation of transcription. Mediates cellular responses to the cytokine KITLG/SCF and other growth factors. Mediates cellular responses to ERBB4. May mediate cellular responses to activated FGFR1, FGFR2, FGFR3 and FGFR4. Binds to the GAS element and activates PRL- induced transcription. Regulates the expression of milk proteins during lactation.

Cellular Location

Cytoplasm. Nucleus. Note=Translocated into the nucleus in response to phosphorylation

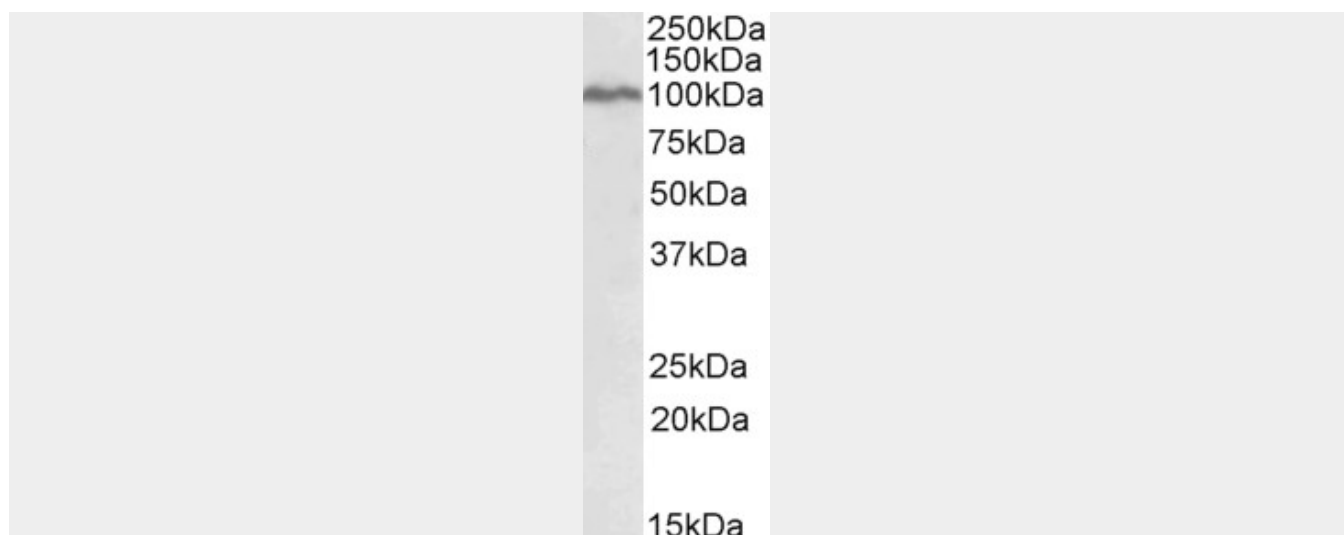
STAT5A (aa681-692) Antibody (internal region) - Protocols

Provided below are standard protocols that you may find useful for product applications.

- [Western Blot](#)
- [Blocking Peptides](#)
- [Dot Blot](#)
- [Immunohistochemistry](#)
- [Immunofluorescence](#)
- [Immunoprecipitation](#)
- [Flow Cytometry](#)
- [Cell Culture](#)

STAT5A (aa681-692) Antibody (internal region) - Images

AF3719a (0.1 µg/ml) staining of K562 lysate (35 µg protein in RIPA buffer). Primary incubation was 1 hour. Detected by chemiluminescence.



AF3719a (0.1 µg/ml) staining of K562 lysate (35 µg protein in RIPA buffer). Primary incubation was 1 hour. Detected by chemiluminescence.

STAT5A (aa681-692) Antibody (internal region) - Background

This antibody is not expected to cross-react with STAT5B.

STAT5A (aa681-692) Antibody (internal region) - References

Src directly tyrosine-phosphorylates STAT5 on its activation site and is involved in erythropoietin-induced signaling pathway. Okutani Y, Kitanaka A, Tanaka T, Kamano H, Ohnishi H, Kubota Y, Ishida T, Takahara J. *Oncogene*. 2001 Oct 4;20(45):6643-50. PMID: 11641791