

Dishevelled1 (aa20-32) Antibody (N-Term)
Peptide-affinity purified goat antibody
Catalog # AF3746a**Specification**

Dishevelled1 (aa20-32) Antibody (N-Term) - Product Information

Application	WB, E
Primary Accession	O14640
Other Accession	NP_034221.3 , 1855 , 13542 (mouse) , 83721 (rat)
Reactivity	Pig
Predicted	Human, Mouse, Rat
Host	Goat
Clonality	Polyclonal
Concentration	0.5 mg/ml
Isotype	IgG
Calculated MW	75187

Dishevelled1 (aa20-32) Antibody (N-Term) - Additional Information**Gene ID** 1855**Other Names**

Segment polarity protein dishevelled homolog DVL-1, Dishevelled-1, DSH homolog 1, DVL1

Dilution

WB~~1:1000

E~~N/A

Format

0.5 mg/ml in Tris saline, 0.02% sodium azide, pH7.3 with 0.5% bovine serum albumin

Storage

Maintain refrigerated at 2-8°C for up to 6 months. For long term storage store at -20°C in small aliquots to prevent freeze-thaw cycles.

Precautions

Dishevelled1 (aa20-32) Antibody (N-Term) is for research use only and not for use in diagnostic or therapeutic procedures.

Dishevelled1 (aa20-32) Antibody (N-Term) - Protein Information**Name** DVL1**Function**

Participates in Wnt signaling by binding to the cytoplasmic C-terminus of frizzled family members and transducing the Wnt signal to down-stream effectors. Plays a role both in canonical and

non-canonical Wnt signaling. Plays a role in the signal transduction pathways mediated by multiple Wnt genes. Required for LEF1 activation upon WNT1 and WNT3A signaling. DVL1 and PAK1 form a ternary complex with MUSK which is important for MUSK-dependent regulation of AChR clustering during the formation of the neuromuscular junction (NMJ).

Cellular Location

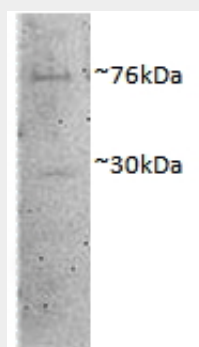
Cell membrane; Peripheral membrane protein; Cytoplasmic side. Cytoplasm, cytosol. Cytoplasmic vesicle Note=Localizes at the cell membrane upon interaction with frizzled family members.

Dishevelled1 (aa20-32) Antibody (N-Term) - Protocols

Provided below are standard protocols that you may find useful for product applications.

- [Western Blot](#)
- [Blocking Peptides](#)
- [Dot Blot](#)
- [Immunohistochemistry](#)
- [Immunofluorescence](#)
- [Immunoprecipitation](#)
- [Flow Cytometry](#)
- [Cell Culture](#)

Dishevelled1 (aa20-32) Antibody (N-Term) - Images



AF3746a (1 µg/ml) staining of Porcine MII Oocytes lysate (35 µg protein in RIPA buffer). Primary incubation was overnight. Detected by chemiluminescence.

Dishevelled1 (aa20-32) Antibody (N-Term) - References

Nuclear factor of activated T cells (NFAT) proteins repress canonical Wnt signaling via its interaction with Dishevelled (Dvl) protein and participate in regulating neural progenitor cell proliferation and differentiation. Huang T, Xie Z, Wang J, Li M, Jing N, Li L. J Biol Chem. 2011 Oct 28;286(43):37399-405. PMID: 21880741