

MEX3C (aa541-554) Antibody (internal region)
Peptide-affinity purified goat antibody
Catalog # AF3772a**Specification**

MEX3C (aa541-554) Antibody (internal region) - Product Information

Application	WB, E
Primary Accession	Q5U5Q3
Other Accession	NP_057710.3 , 51320 , 240396 (mouse) , 307271 (rat)
Reactivity	Mouse
Predicted	Human, Rat, Pig, Dog
Host	Goat
Clonality	Polyclonal
Concentration	0.5 mg/ml
Isotype	IgG
Calculated MW	69366

MEX3C (aa541-554) Antibody (internal region) - Additional Information**Gene ID** 51320**Other Names**

RNA-binding E3 ubiquitin-protein ligase MEX3C, 6.3.2.-, RING finger and KH domain-containing protein 2, RING finger protein 194, MEX3C, RKHD2, RNF194

Dilution

WB~~1:1000

E~~N/A

Format

0.5 mg/ml in Tris saline, 0.02% sodium azide, pH7.3 with 0.5% bovine serum albumin

Storage

Maintain refrigerated at 2-8°C for up to 6 months. For long term storage store at -20°C in small aliquots to prevent freeze-thaw cycles.

Precautions

MEX3C (aa541-554) Antibody (internal region) is for research use only and not for use in diagnostic or therapeutic procedures.

MEX3C (aa541-554) Antibody (internal region) - Protein Information**Name** MEX3C**Synonyms** RKHD2, RNF194

Function

E3 ubiquitin ligase responsible for the post-transcriptional regulation of common HLA-A allotypes. Binds to the 3' UTR of HLA-A2 mRNA, and regulates its levels by promoting mRNA decay. RNA binding is sufficient to prevent translation, but ubiquitin ligase activity is required for mRNA degradation.

Cellular Location

Cytoplasm. Nucleus. Note=Predominantly expressed in the cytoplasm and shuttles between the cytoplasm and the nucleus through the CRM1 export pathway. May act as suppressor of replication stress and chromosome missegregation

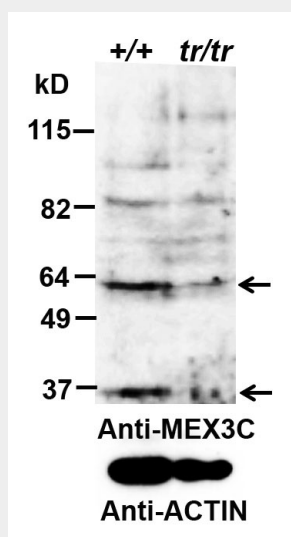
Tissue Location

Highest levels found in fetal brain and testis. Also expressed in thymus, salivary gland and uterus. Highly expressed in cells of the innate immune system, in particular activated NK cells. Weak expression in the intestine.

MEX3C (aa541-554) Antibody (internal region) - Protocols

Provided below are standard protocols that you may find useful for product applications.

- [Western Blot](#)
- [Blocking Peptides](#)
- [Dot Blot](#)
- [Immunohistochemistry](#)
- [Immunofluorescence](#)
- [Immunoprecipitation](#)
- [Flow Cytometry](#)
- [Cell Culture](#)

MEX3C (aa541-554) Antibody (internal region) - Images

AF3772a (0.2 µg/ml) staining of Mouse Testis (+/+ is wt, trp/trp is knock-down) lysate (35 µg protein in RIPA buffer). Data obtained by Dr. B. Lu, Wake Forest Baptist Medical Center, Winston-Salem, NC, USA. Primary incubation was 1 hour. Detected by chemiluminescence.

MEX3C (aa541-554) Antibody (internal region) - References

Identification and characterization of human

Mex-3 proteins, a novel family of evolutionarily conserved RNA binding proteins differentially localized to processing bodies. Buchet-Poyau K, Courchet J, Le Hir H, Séraphin B, Scoazec JY, Duret L, Domon-Dell C, Freund JN, Billaud M. Nucleic Acids Res. 2007;35(4):1289-300. PMID: 17267406