

PRMT2 Antibody (internal region)
Peptide-affinity purified goat antibody
Catalog # AF3781a**Specification**

PRMT2 Antibody (internal region) - Product Information

Application	WB
Primary Accession	P55345
Other Accession	NP_001526.2 , NP_001229793.1 , NP_001229794.1 , NP_001229795.1 , 3275 , 15468 (mouse) , 499420 (rat)
Reactivity	Human, Mouse, Rat
Predicted	Pig, Cow
Host	Goat
Clonality	Polyclonal
Concentration	0.5 mg/ml
Isotype	IgG
Calculated MW	49042

PRMT2 Antibody (internal region) - Additional Information**Gene ID** 3275**Other Names**

Protein arginine N-methyltransferase 2, 2.1.1.-, Histone-arginine N-methyltransferase PRMT2, 2.1.1.125, PRMT2, HMT1, HRMT1L1

Format

0.5 mg/ml in Tris saline, 0.02% sodium azide, pH7.3 with 0.5% bovine serum albumin

Storage

Maintain refrigerated at 2-8°C for up to 6 months. For long term storage store at -20°C in small aliquots to prevent freeze-thaw cycles.

Precautions

PRMT2 Antibody (internal region) is for research use only and not for use in diagnostic or therapeutic procedures.

PRMT2 Antibody (internal region) - Protein Information**Name** PRMT2**Synonyms** HMT1, HRMT1L1**Function**

Arginine methyltransferase that methylates the guanidino nitrogens of arginyl residues in proteins such as STAT3, FBL, histone H4. Acts as a coactivator (with NCOA2) of the androgen receptor (AR)-

mediated transactivation. Acts as a coactivator (with estrogen) of estrogen receptor (ER)-mediated transactivation. Enhances PGR, PPARG, RARA-mediated transactivation. May inhibit NF-kappa-B transcription and promote apoptosis. Represses E2F1 transcriptional activity (in a RB1- dependent manner). May be involved in growth regulation.

Cellular Location

[Isoform 1]: Cytoplasm. Nucleus. Note=Translocates from the cytoplasm to the nucleus, after hormone exposure. Excluded from nucleolus [Isoform PRMT2Beta]: Cytoplasm. Nucleus. Nucleus, nucleolus [Isoform PRMT2L2]: Cytoplasm. Nucleus Note=Predominantly cytoplasmic

Tissue Location

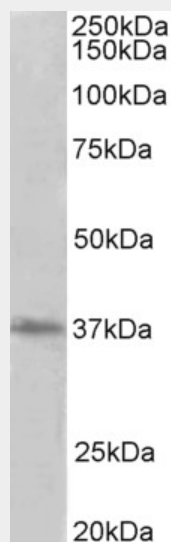
Widely expressed. Highly expressed in androgen target organs such as heart, prostate, skeletal muscle, ovary and spinal cord.

PRMT2 Antibody (internal region) - Protocols

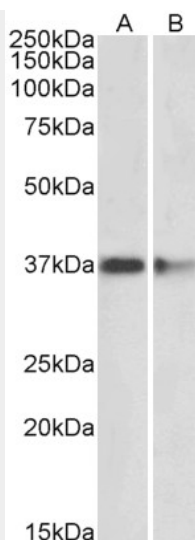
Provided below are standard protocols that you may find useful for product applications.

- [Western Blot](#)
- [Blocking Peptides](#)
- [Dot Blot](#)
- [Immunohistochemistry](#)
- [Immunofluorescence](#)
- [Immunoprecipitation](#)
- [Flow Cytometry](#)
- [Cell Culture](#)

PRMT2 Antibody (internal region) - Images



AF3781a (2 µg/ml) staining of HeLa lysate (35 µg protein in RIPA buffer). Primary incubation was 1 hour. Detected by chemiluminescence.



AF3781a (2 µg/ml) staining of Mouse (A) and Rat (B) Brain lysates (35 µg protein in RIPA buffer). Primary incubation was 1 hour. Detected by chemiluminescence.

PRMT2 Antibody (internal region) - Background

This antibody is expected to recognize all reported isoforms (NP_001526.2; NP_001229793.1; NP_001229794.1; NP_001229795.1). Reported variants represent identical protein: NP_001526.2, NP_996845.1

PRMT2 Antibody (internal region) - References

A protein arginine N-methyltransferase 1 (PRMT1) and 2 heteromeric interaction increases PRMT1 enzymatic activity. Pak ML, Lakowski TM, Thomas D, Vhuiyan MI, Hüsecken K, Frankel A. Biochemistry. 2011 Sep 27;50(38):8226-40. PMID: 21851090