

**PDCD4 Antibody (internal region)**  
**Peptide-affinity purified goat antibody**  
**Catalog # AF3789a**

**Specification**

---

**PDCD4 Antibody (internal region) - Product Information**

Application	WB, E
Primary Accession	<a href="#">Q53EL6</a>
Other Accession	<a href="#">NP_055271.2</a> , <a href="#">NP_663314.1</a> , <a href="#">NP_001186421.1</a> , <a href="#">27250</a> , <a href="#">18569 (mouse)</a> , <a href="#">64031 (rat)</a>
Reactivity	Human, Mouse
Predicted	Rat, Pig, Dog
Host	Goat
Clonality	Polyclonal
Concentration	0.5 mg/ml
Isotype	IgG
Calculated MW	51735

**PDCD4 Antibody (internal region) - Additional Information**

**Gene ID** 27250

**Other Names**

Programmed cell death protein 4, Neoplastic transformation inhibitor protein, Nuclear antigen H731-like, Protein 197/15a, PDCD4, H731

**Dilution**

WB~~1:1000

E~~N/A

**Format**

0.5 mg/ml in Tris saline, 0.02% sodium azide, pH7.3 with 0.5% bovine serum albumin

**Storage**

Maintain refrigerated at 2-8°C for up to 6 months. For long term storage store at -20°C in small aliquots to prevent freeze-thaw cycles.

**Precautions**

PDCD4 Antibody (internal region) is for research use only and not for use in diagnostic or therapeutic procedures.

**PDCD4 Antibody (internal region) - Protein Information**

**Name** PDCD4

**Synonyms** H731

**Function**

Inhibits translation initiation and cap-dependent translation. May exert its function by hindering the interaction between EIF4A1 and EIF4G. Inhibits the helicase activity of EIF4A. Modulates the activation of JUN kinase. Down-regulates the expression of MAP4K1, thus inhibiting events important in driving invasion, namely, MAPK85 activation and consequent JUN-dependent transcription. May play a role in apoptosis. Tumor suppressor. Inhibits tumor promoter-induced neoplastic transformation. Binds RNA (By similarity).

**Cellular Location**

Nucleus {ECO:0000250|UniProtKB:Q61823}. Cytoplasm {ECO:0000250|UniProtKB:Q61823}. Note=Shuttles between the nucleus and cytoplasm (By similarity). Predominantly nuclear under normal growth conditions, and when phosphorylated at Ser-457 (PubMed:16357133)

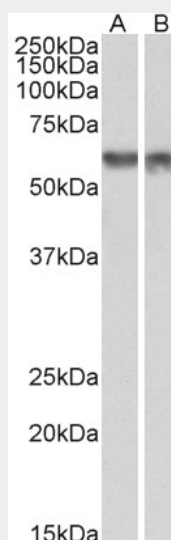
**Tissue Location**

Up-regulated in proliferative cells. Highly expressed in epithelial cells of the mammary gland. Reduced expression in lung cancer and colon carcinoma.

**PDCD4 Antibody (internal region) - Protocols**

Provided below are standard protocols that you may find useful for product applications.

- [Western Blot](#)
- [Blocking Peptides](#)
- [Dot Blot](#)
- [Immunohistochemistry](#)
- [Immunofluorescence](#)
- [Immunoprecipitation](#)
- [Flow Cytometry](#)
- [Cell Culture](#)

**PDCD4 Antibody (internal region) - Images**

AF3789a (1 µg/ml) staining of nuclear NIH3T3 (A) and nuclear HeLa (B) lysates (35 µg protein in RIPA buffer). Primary incubation was 1 hour. Detected by chemiluminescence.

**PDCD4 Antibody (internal region) - Background**

This antibody is expected to recognize all reported isoforms (NP\_055271.2; NP\_663314.1; NP\_001186421.1).

#### **PDCD4 Antibody (internal region) - References**

Programmed cell death 4 enhances chemosensitivity of ovarian cancer cells by activating death receptor pathway in vitro and in vivo. Zhang X, Wang X, Song X, Liu C, Shi Y, Wang Y, Afonja O, Ma C, Chen YH, Zhang L. Cancer Sci. 2010 Oct;101(10):2163-70. PMID: 20735432