

Contactin 4 / Big-2 (mouse aa160-172) Antibody (internal region)
Peptide-affinity purified goat antibody
Catalog # AF3867a**Specification**

Contactin 4 / Big-2 (mouse aa160-172) Antibody (internal region) - Product Information

Application	WB, E
Primary Accession	Q8I WV2
Other Accession	NP_001103219.1 , NP_766592.2 , 152330 , 269784 (mouse) , 116658 (rat)
Reactivity	Mouse
Predicted	Human, Rat, Dog
Host	Goat
Clonality	Polyclonal
Concentration	0.5 mg/ml
Isotype	IgG
Calculated MW	113454

Contactin 4 / Big-2 (mouse aa160-172) Antibody (internal region) - Additional Information**Gene ID** 152330**Other Names**

Contactin-4, Brain-derived immunoglobulin superfamily protein 2, BIG-2, CNTN4

Dilution

WB~~1:1000

E~~N/A

Format

0.5 mg/ml in Tris saline, 0.02% sodium azide, pH7.3 with 0.5% bovine serum albumin

Storage

Maintain refrigerated at 2-8°C for up to 6 months. For long term storage store at -20°C in small aliquots to prevent freeze-thaw cycles.

Precautions

Contactin 4 / Big-2 (mouse aa160-172) Antibody (internal region) is for research use only and not for use in diagnostic or therapeutic procedures.

Contactin 4 / Big-2 (mouse aa160-172) Antibody (internal region) - Protein Information**Name** CNTN4**Function**

Contactins mediate cell surface interactions during nervous system development. Has some

neurite outgrowth-promoting activity. May be involved in synaptogenesis.

Cellular Location

Cell membrane; Lipid-anchor, GPI-anchor. Secreted

Tissue Location

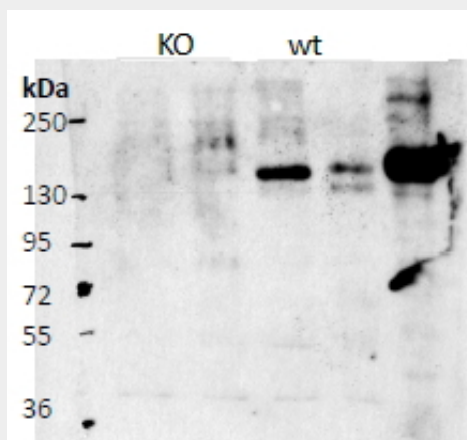
Mainly expressed in brain. Highly expressed in cerebellum and weakly expressed in corpus callosum, caudate nucleus, amygdala and spinal cord. Also expressed in testis, pancreas, thyroid, uterus, small intestine and kidney. Not expressed in skeletal muscle Isoform 2 is weakly expressed in cerebral cortex

Contactin 4 / Big-2 (mouse aa160-172) Antibody (internal region) - Protocols

Provided below are standard protocols that you may find useful for product applications.

- [Western Blot](#)
- [Blocking Peptides](#)
- [Dot Blot](#)
- [Immunohistochemistry](#)
- [Immunofluorescence](#)
- [Immunoprecipitation](#)
- [Flow Cytometry](#)
- [Cell Culture](#)

Contactin 4 / Big-2 (mouse aa160-172) Antibody (internal region) - Images



AF3867a (0.5 µg/ml) staining of Mouse Olfactory bulb (lanes 1 and 3) and Cerebral cortex (lanes 2 and 4), comparing wildtype (lanes 3 and 4) with KO mice (lanes 1 and 2). The last lane contains a lysate of HEK293 overexpressing Mouse Cntn4 (lysate (35 µg protein in RIPA buffer). Primary incubation was 1 hour. Detected by chemiluminescence. Data obtained from Gerrald Lodewijk and Peter Burbach, Rudolf Magnus Institute, Utrecht, Netherlands.

Contactin 4 / Big-2 (mouse aa160-172) Antibody (internal region) - Background

This antibody is expected to recognize both reported isoforms (NP_001103219.1; NP_766592.2). Reported variants represent identical protein: NP_766592.2, NP_001103221.1

Contactin 4 / Big-2 (mouse aa160-172) Antibody (internal region) - References

BIG-2 mediates olfactory axon convergence to target glomeruli. Kaneko-Goto T, Yoshihara S,

Miyazaki H, Yoshihara Y. Neuron. 2008 Mar 27;57(6):834-46. PMID: 18367085